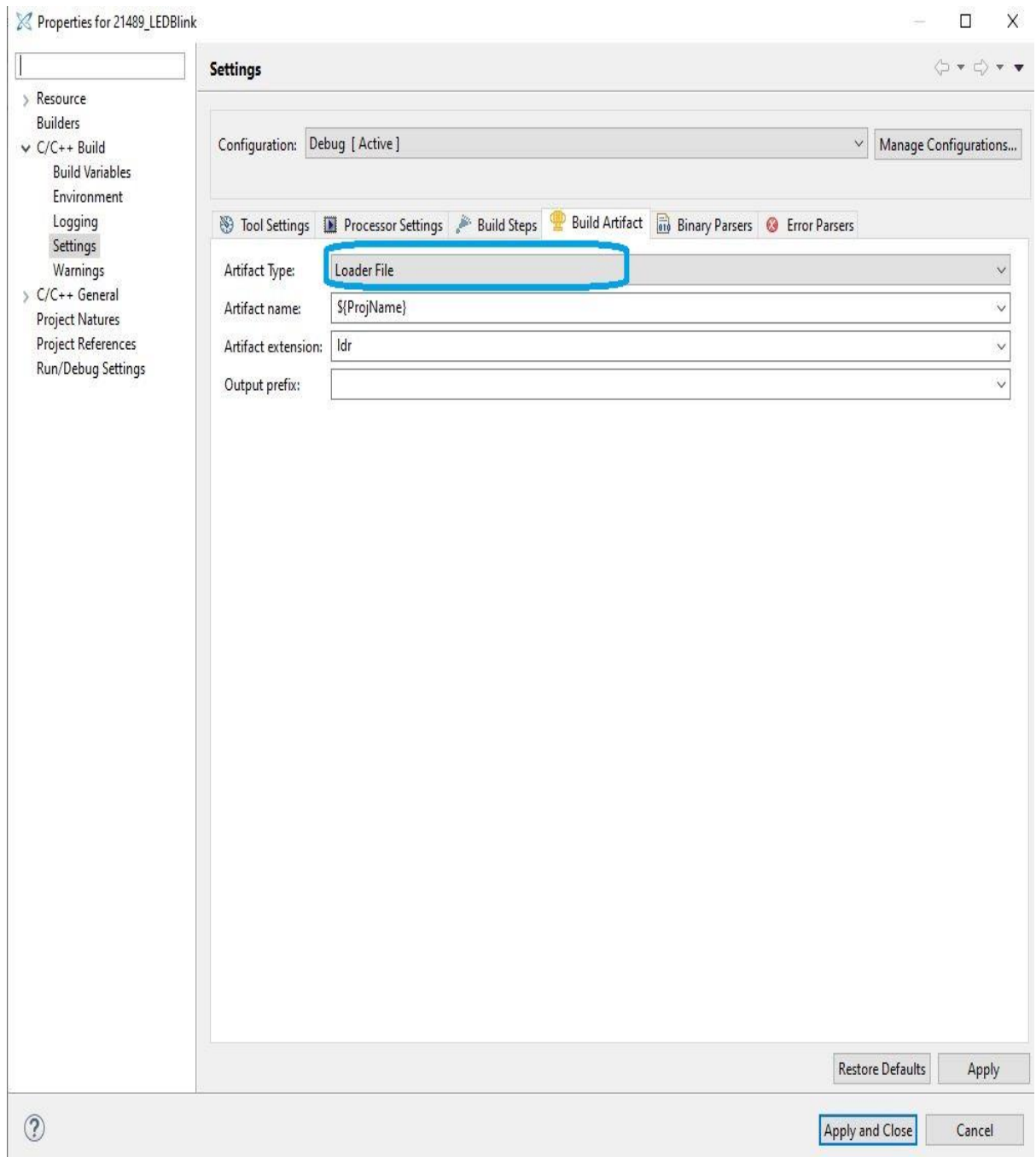


ADSP-21489 SPI Slave Booting procedure:

CCES version: 2.11.1

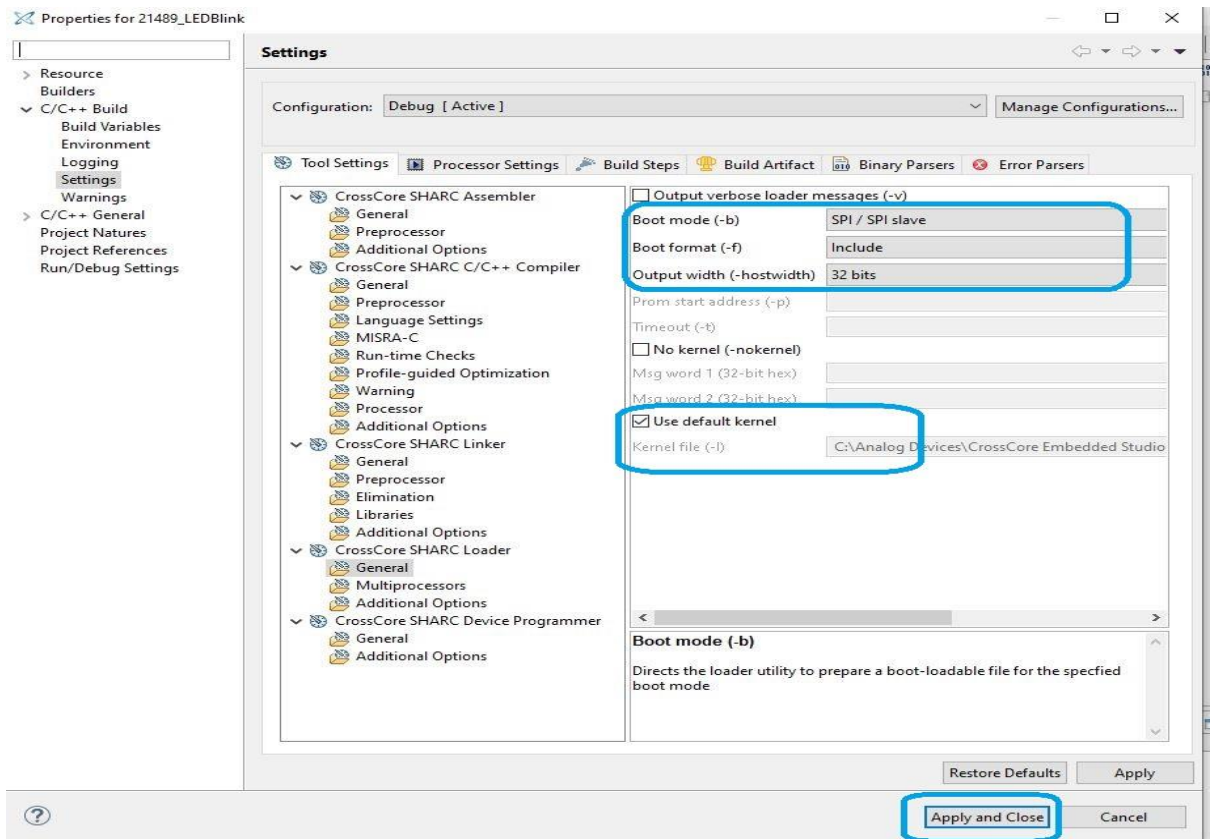
Hardware: ADSP-21489 Ezkit – 2 No's

1. Open application project in CCES
2. To create loader file,
Choose **Project --> Properties --> C/C++ Build --> Settings --> Build Artifact --> Artifact type --> Loader file** as shown below:



ADSP-21489 SPI Slave Booting procedure:

- In the Tool settings, Click **Crosscore SHARC Loader-General** and set options as shown in fig:



- Click Apply and Close.
- Build the Project and Loader file created in Debug folder.
- Use this loader file in Host code.
- Make the connection between 2 Ezkit as below:

SPI Master(P2 connector)	SPI Slave (P2 connector)
SPI CLK (Pin 25)	SPI CLK(Pin 24)
SPI MOSI (Pin 27)	SPI MOSI(Pin 25)
FLAG0 (Pin 24)	DS (Pin 23)
GND (Pin 1)	GND (Pin 1)

- Change the Boot mode to 0 in SW4 and Reset the Slave board.
- Run the Host code in master Ezkit.
- You can see LEDs start to blink in Slave Kit.