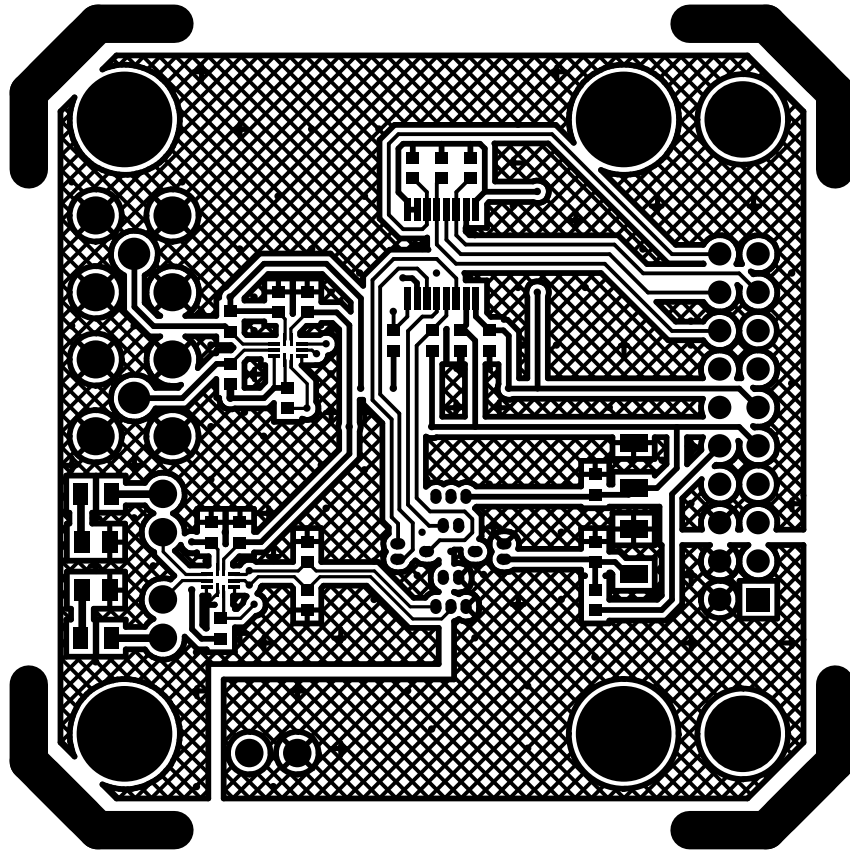
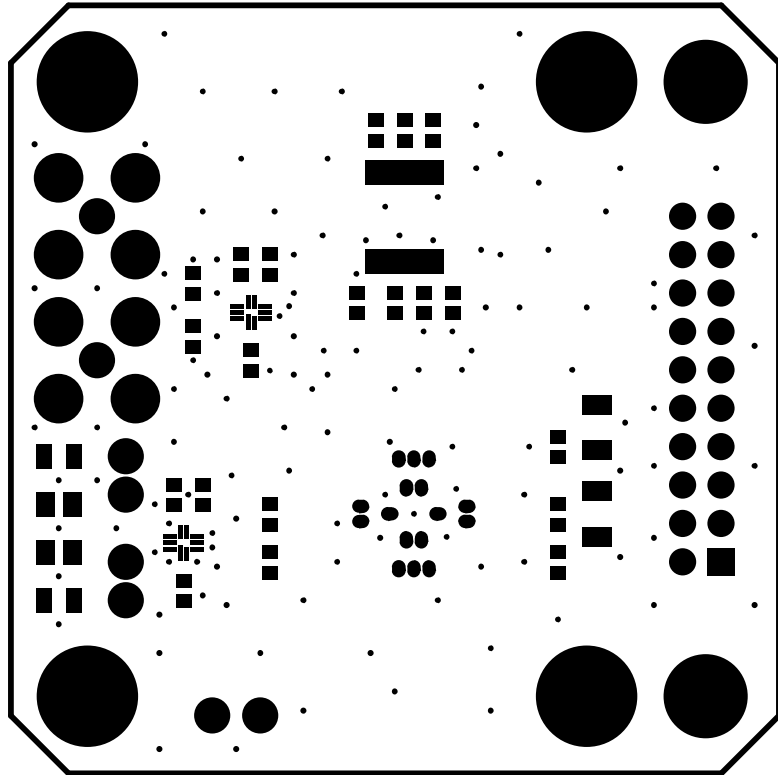


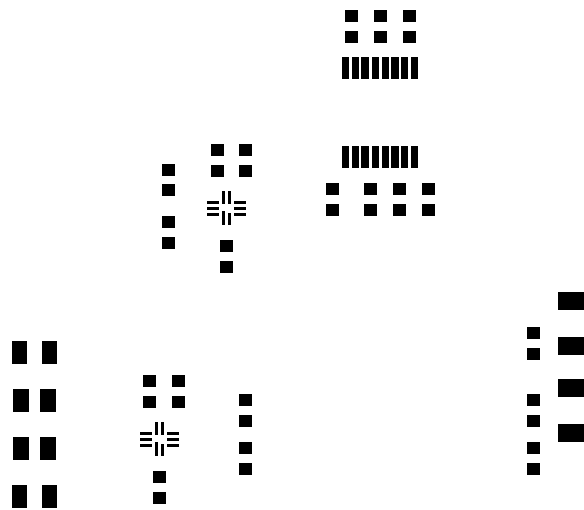
XL362 SATELLITE
SILKSCREEN LAYER 1 (TOP)



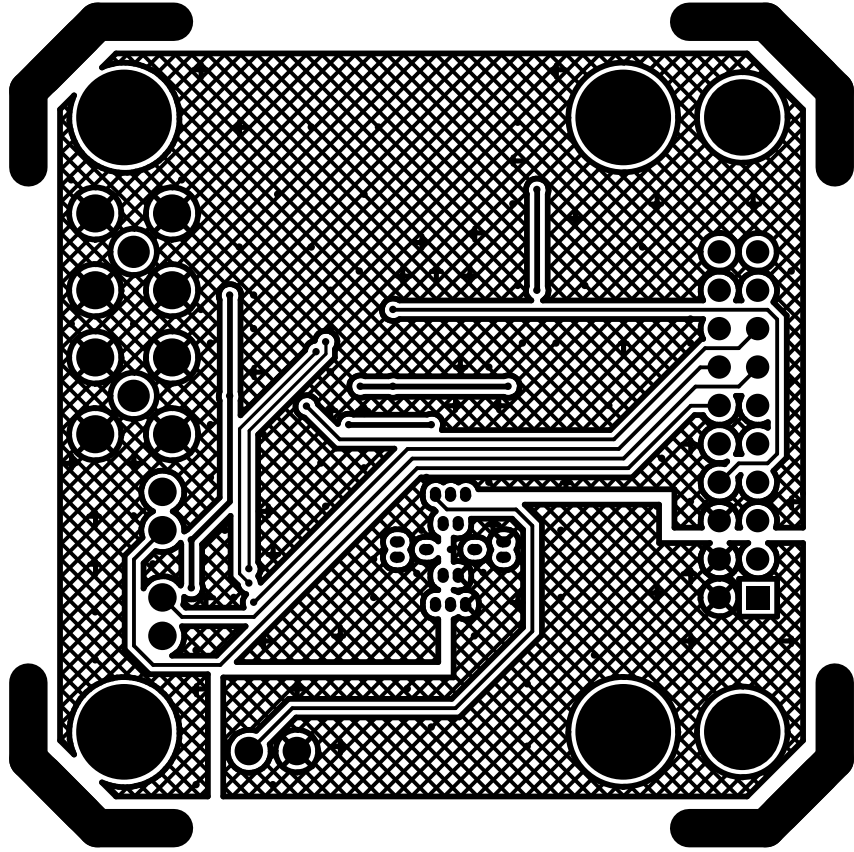
XL362 SATELLITE
LAYER 1 (TOP)



XL362 SATELLITE
SOLDERMASK LAYER 1 (TOP)

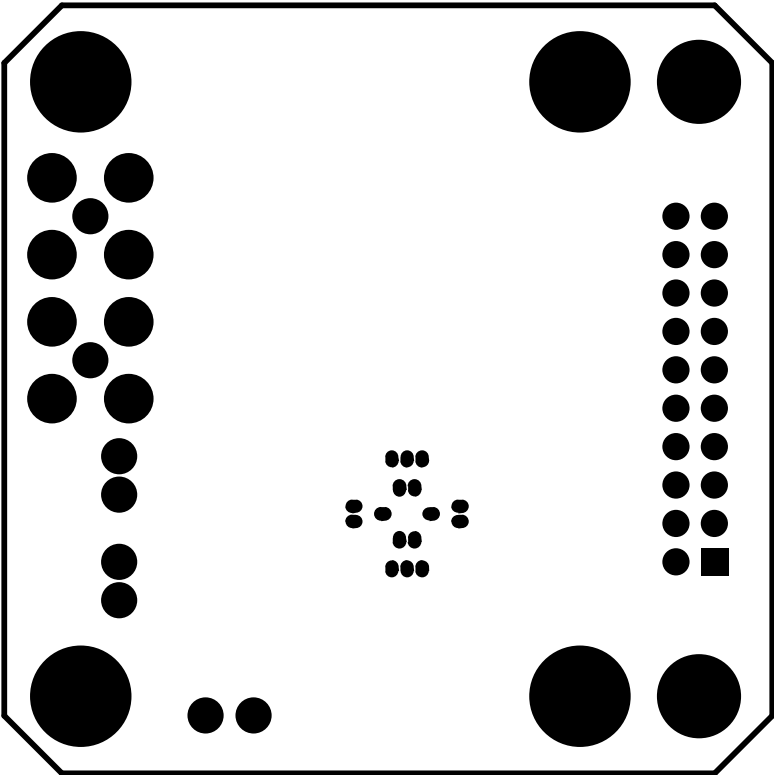


XL362 SATELLITE
PASTEMASK LAYER 1 (TOP)

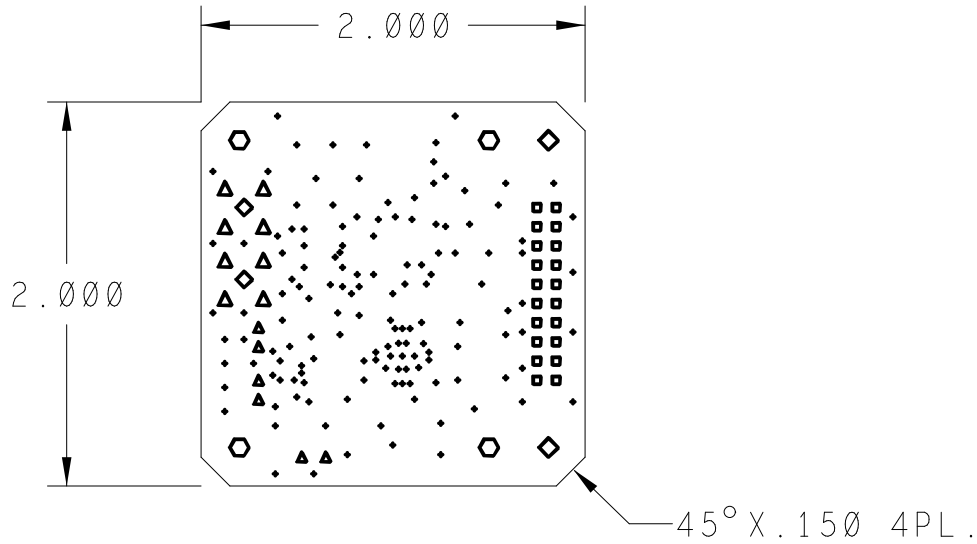


LAYER 5 (BOTTOM)
XL365 SATELLITE

SOLDERMASK LAYER 5 (BOTTOM)
XL365 SATELLITE



PCB VIEWED FROM LAYER 1 (TOP)



NOTES :

- PCB SPEC: PCB SHALL BE MANUFACTURED TO MEET ALL SPECIFICATIONS AND REQUIREMENTS OF IPC-6011 AND IPC-6012, CLASS 2 EXCEPT AS NOTED.
- MATERIAL: EPOXY GLASS, TYPE FR4, 0.062" THICK, 1 OZ CU PLATE BOTH SIDES, DK 4.3-4.5
- SOLDER MASK: COLOR GREEN, PHOTOIMAGEABLE TYPE PER IPC SM-840, TYPE B, CLASS 2. APPLY OVER BARE COPPER TO BOTH SIDES OF PCB.
- FINISH: IMMERSION GOLD (NIG) OR SILVER WHITE TIN IS ACCEPTABLE.
- SILKSCREEN: APPLY WHITE EPOXY INK TO COMPONENT SIDE OF PCB. ADD VENDOR ID AND DATE CODE TO SILKSCREEN TOP.
- DRILL SIZES: HOLES SIZES IN DRILL LEGEND REPRESENT FINISHED SIZE AFTER PLATING. MIN THICKNESS TO BE 0.0015"
- PHOTOTOOLS: ON FINISHED PCB'S, COPPER ETCH IS TO BE WITHIN +/- 0.0005" OF PHOTOTOOL DATA.

DRILL CHART			
ALL UNITS ARE IN MILS			
SYMBOL	SIZE	FINISH	QTY
◆	10.0	PLATED	126
◆	20.0	PLATED	16
■	38.0	PLATED	20
▲	43.0	PLATED	6
◇	59.0	PLATED	2
▲	67.0	PLATED	8
◇	109.0	PLATED	2
⬡	125.2	PLATED	4

					TITLE / TITRE PCB DETAIL ADXL362 SATELLITE					
					DWN/DESS DATE 2011-10-27		CHK/VER DATE		APPD/APP DATE	
					A		DWG NO. NO. DU DESSIN x1362_sat			
					SCALE/ECHELLE 1:1		INTEMPCO CONTROLS LTD LES CONTROLES INTEMPCO LTEE		SHEET FEUILLE 1 OF DE 1	
LTR/LET	REVISION	DATE	DWN/DESS	CHK/VER						

CE DESSIN ET SES SPECIFICATIONS SONT LA PROPRIETE DE LES CONTROLES INTEMPCO LTEE. IL NE PEUVENT ETRE PRETES, TRANSFERES, REPRODUITS, COPIES OU SERVIR A LA FABRICATION, L'ACHAT OU LA VENTE D'ARTICLES SANS LE CONSENTEMENT ECRIT DE LES CONTROLES INTEMPCO LTEE.
THIS DRAWING AND SPECIFICATIONS HEREIN ARE THE PROPERTY OF INTEMPCO CONTROLS LTD AND MUST NOT BE LOANED OR OTHERWISE TRANSFERRED TO ANY THIRD PARTY OR REPRODUCED, COPIED OR USED IN CONNECTION WITH THE MANUFACTURE PURCHASE OR SALE OF ITEMS WITHOUT WRITTEN CONSENT OF INTEMPCO CONTROLS LTD.