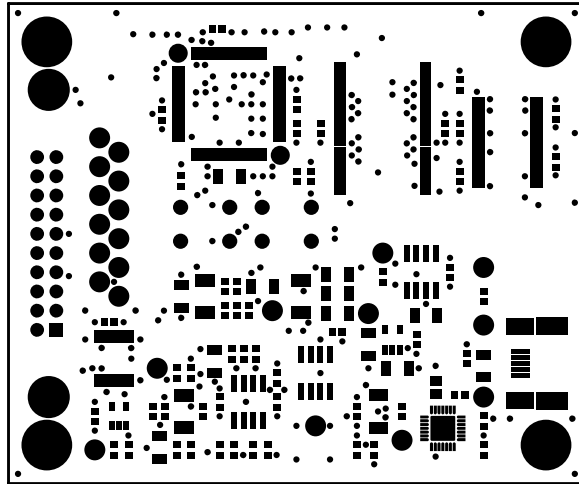
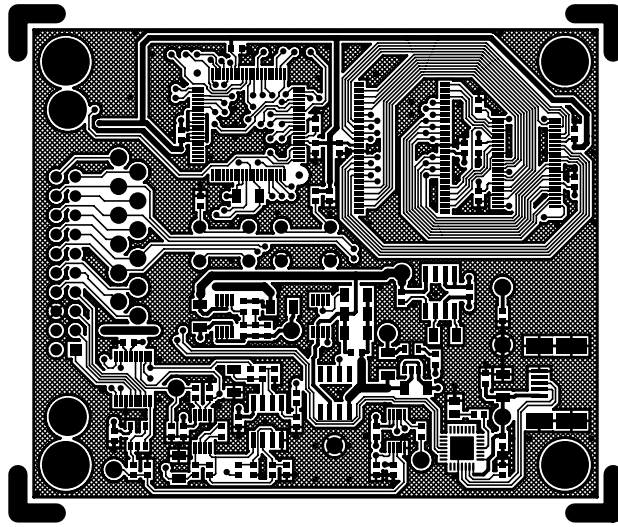


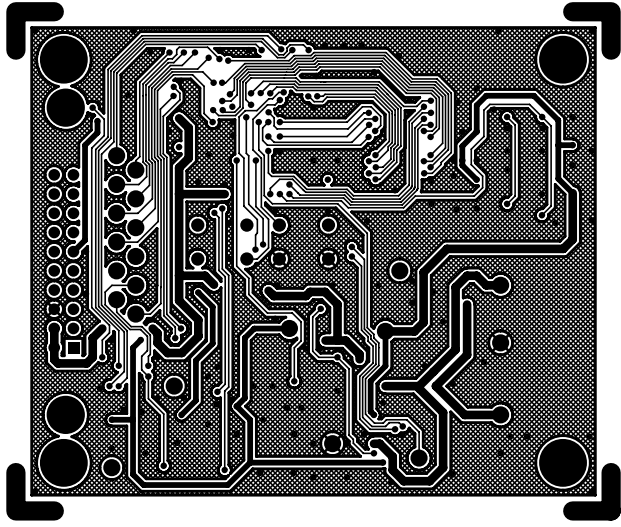
AD EVAL BOARD
 SILKSCREEN LAYER 1 (TOP)



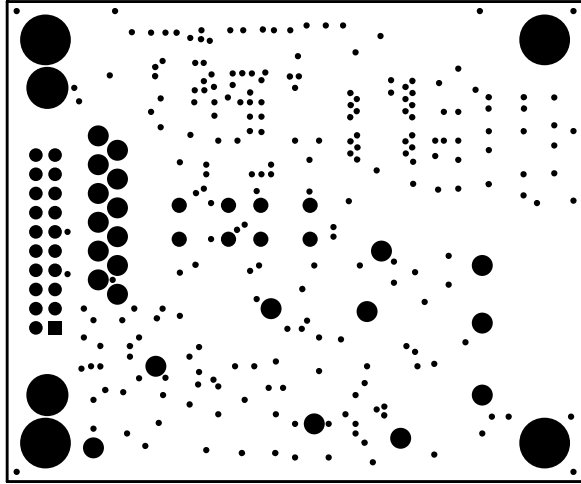
AD EVAL BOARD
SOLDERMASK TOP (LAYER 1)



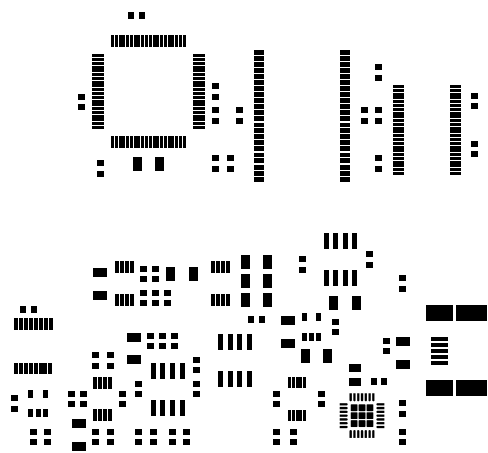
AD EVAL BOARD
LAYER 1 (TOP)



LAYER 5 (BOTTOM)
AD EVAL BOARD

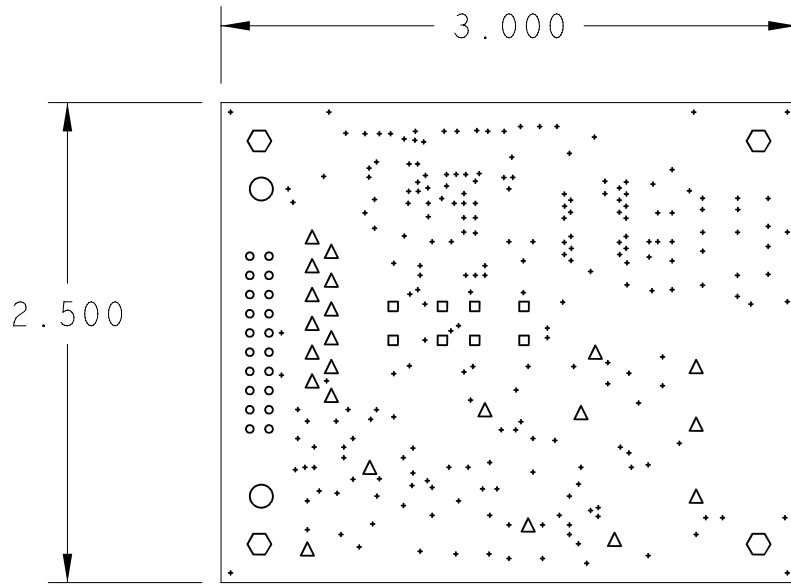


AD EVAL BOARD
SOLDERMASK LAYER 2 (BOTTOM)



AD EVAL BOARD

PCB VIEWED FROM LAYER 1 (TOP)



NOTES :

1. PCB SPEC: PCB SHALL BE MANUFACTURED TO MEET ALL SPECIFICATIONS AND REQUIREMENTS OF IPC-6011 AND IPC-6012, CLASS 2 EXCEPT AS NOTED.
2. MATERIAL: EPOXY GLASS TYPE FR4 HIGH Tg 0.062" THK. 1 OZ CU PLATE BOTH SIDES. DR 4.3-4.5
3. SOLDER MASK: COLOR GREEN, PHOTOIMAGEABLE TYPE PER IPC SM-840, TYPE B, CLASS 2. APPLY OVER BARE COPPER TO BOTH SIDES OF PCB. PREFERRED IS IMMERSION AG. NIG. WHITE TIN. UNFUSED SN/PB IS ACCEPTABLE.
4. FINISH: HASL (OR HOT OIL) IS LEAST PREFERRED.
5. SILKSCREEN: APPLY WHITE EPOXY INK TO COMPONENT SIDE OF PCB. ADD VENDOR ID AND DATE CODE TO SILKSCREEN TOP.
6. DRILL SIZES: HOLES SIZES IN DRILL LEGEND REPRESENT FINISHED SIZE AFTER PLATING. MIN THICKNESS TO BE 0.0015".
7. PHOTOTOOLS: ON FINISHES PCB'S, COPPER ETCH IS TO BE WITHIN +/- 0.0005" OF PHOTOTOOL DATA.

DRILL CHART: TOP to BOTTOM			
ALL UNITS ARE IN MILS			
SYMBOL	SIZE	FINISH	QTY
•	20	PLATED	232
○	38	PLATED	20
□	46	PLATED	8
△	70	PLATED	22
◯	109	PLATED	2
⬡	125	PLATED	4

					TITLE / TITRE PCB DETAIL AD EVAL BOARD					
					DWN/DESS DATE		CHK/VER DATE		APPD/APP DATE	
					A		DWG NO. NO. DU DESSIN		AD EVAL BOARD REV. 6.5	
					SCALE/ECHELLE		INTEMPCO CONTROLS LTD LES CONTROLES INTEMPCO LTEE		SHEET 1 OF 1 FEUILLE 1 DE 1	
LTR/LET	REVISION	DATE	DWN/DESS	CHK/VER						

CE DESSIN ET SES SPECIFICATIONS SONT LA PROPRIETE DE LES CONTROLES INTEMPCO LTEE. IL NE PEUVENT ETRE PRETES, TRANSFERES, REPRODUITS, COPIES OU SERVIR A LA FABRICATION, L'ACHAT OU LA VENTE D'ARTICLES SANS LE CONSENTEMENT ECRIT DE LES CONTROLES INTEMPCO LTEE.
THIS DRAWING AND SPECIFICATIONS HEREIN ARE THE PROPERTY OF INTEMPCO CONTROLS LTD AND MUST NOT BE LOANED OR OTHERWISE TRANSFERRED TO ANY THIRD PARTY OR REPRODUCED, COPIED OR USED IN CONNECTION WITH THE MANUFACTURE PURCHASE OR SALE OF ITEMS WITHOUT WRITTEN CONSENT OF INTEMPCO CONTROLS LTD.