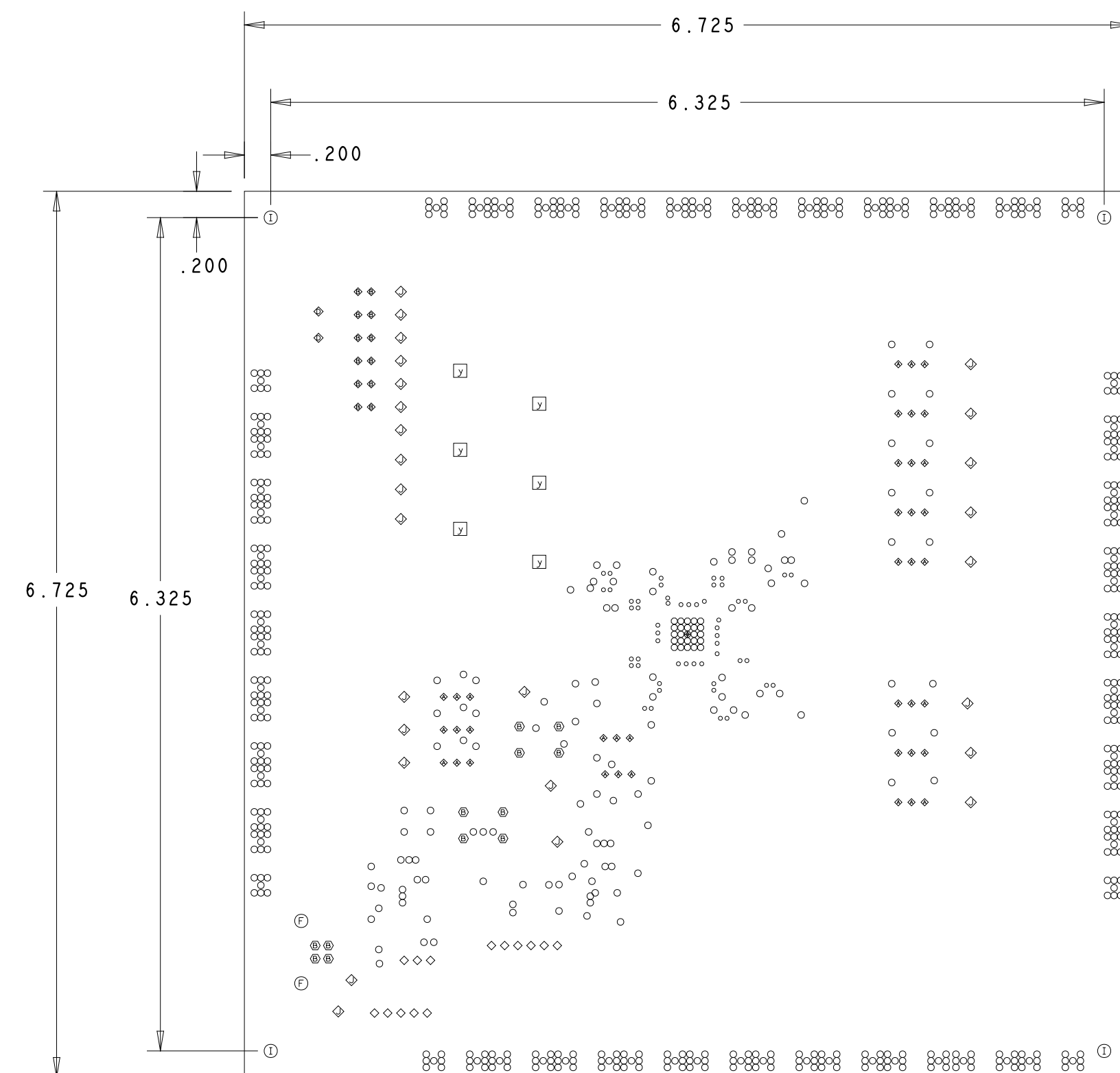


REVISIONS			
REV	DESCRIPTION	DATE	APPROVED
A	INITIAL RELEASE	06/07	L.C.
B	AS PER ECR 060724	05MAY16	J. M.

ARTWORK SELECTION TABLE		
FILM	DESCRIPTION	-2
1	COMP (TOP) SIDE	X
2	CIRC (BOT) SIDE	X
3	SILKSCREEN TOP	X
4	SOLDERMASK TOP	X
5	SILKSCREEN BOT	X
6	SOLDERMASK BOT	X
7	INT1	X
8	INT2	X
9	INT3	X
10	INT4	X
11	GOLDMASK BUMP TOP	
12	GOLDMASK BUMP BOT	
13	PASTEMASK TOP	X
14	PASTEMASK BOT	X
15	BUMPLET TOP	
16	BUMPLET BOT	
17	GOLDMASK TOP	
18	GOLDMASK BOT	

19	INT5	X
20	INT6	X
23	ALT SOLDERMASK TOP	

PLATING
ALL AU 10



HOLE LEGEND		
UNLESS OTHERWISE SPECIFIED, ALL HOLE SIZES ARE PLATED-THRU		
SYMBOL	DESCRIPTION	QTY
°	.008 DIA MAX	52
◊	.012 DIA MAX	25
○	.018 DIA MAX	627
*	.035 +/- .003 DIA	39
⊕	.036 +/- .003 DIA	12
+	.040 +/- .003 DIA	12
◇	.045 +/- .003 DIA	14
⊕	.050 +/- .003 DIA	2
⊕	.063 +/- .003 DIA	26
⊕	.281 +/- .003 DIA	6
FOLLOWING HOLES ARE NOT PLATED		
⊕	.106 +/- .003 DIA THRU	2
⊕	.120 +/- .003 DIA THRU	4

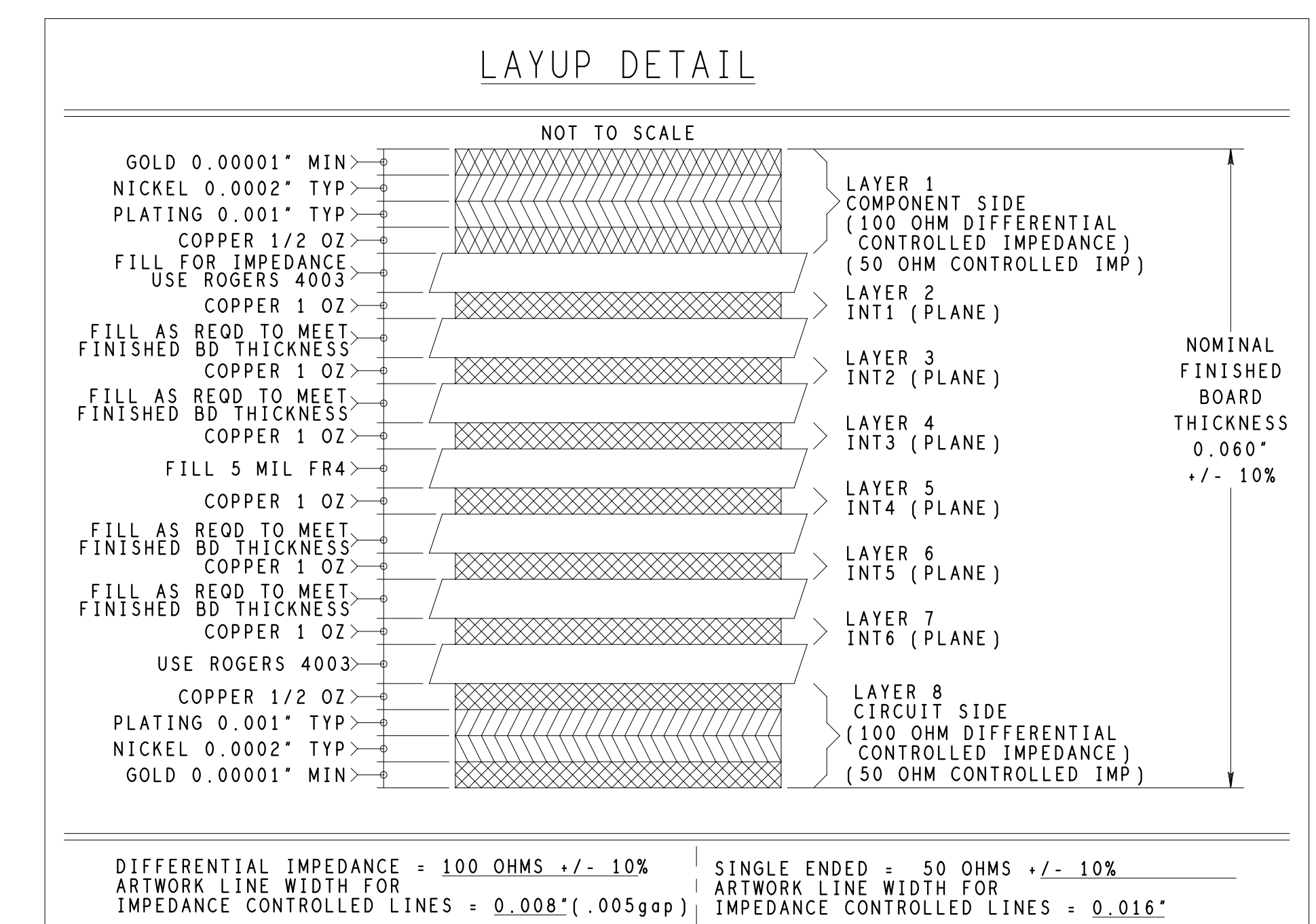
SEE NOTE 17

FABRICATION NOTES:

- MATERIAL: .060 THK ROGERS 4003/IS410 GLASS EPOXY LAMINATE, COPPER CLAD 10Z/ 8-LAYER MULTILAYER PER MIL-P-13949F CLASS 2 FLAMMABILITY RATING FOR BOARD MATERIAL SHALL BE 94V-2 MINIMUM.
- FINISHED COPPER THICKNESS SHALL BE .001 IN. MIN IN PLATED-THRU HOLES AND .0026 IN. MIN (NOMINAL 1.5 OZ) FOR CONDUCTORS AND PADS.
- THERE SHALL BE NO STRAY PARTICLES ON THE BOARD OR CIRCUITS.
- MINIMUM DESIGN LINE WIDTH SHALL BE 0.008".
- MINIMUM DESIGN SPACING SHALL BE 0.005".
- ALL HOLES TO BE DRILLED WITHIN $\pm .008$ DIA OF ACTUAL PAD CENTER.
- TANGENT BREAKOUT IS ACCEPTABLE ON PADS, EXCEPT IN DIRECTION OF CONNECTING TRACK.
- ALL LAYER REGISTRATION TO BE WITHIN 0.005".
- MAXIMUM FINISHED BOARD WARPAGE SHALL BE 0.010 IN/IN.
- LPI SOLDER MASK, BOTH SIDES .002 THICK MAX. COLOR: GREEN.
- SILKSCREEN BOTH SIDES; COLOR, YELLOW
- ALL ANALOG DEVICES SUPPLIED MATERIAL TO BE RETURNED IN ORIGINAL CONDITION.
- MANUFACTURER'S LOGO AND DATE CODE TO APPEAR IN COPPER ON COMPONENT SIDE, NEAR BOARD PART NUMBER.
- PLATING OPTION TO BE APPENDED TO BOARD PART NUMBER ON BOTTOM, IN COPPER. INCLUDE DASH (-) AND NUMBER.
- IPC NETLIST TESTING TO BE DONE WITH NETLIST PROVIDED PRIOR TO FABRICATION. ANY INTENTIONAL SHORTS WILL BE DEFINED IN SHORTS.TXT FILE.
- GND LAYERS ARE DESIGNED TO EXTEND TO EDGE OF BOARD. CAN BE PULLED BACK .015 IF NECESSARY.
- THRU VIAS FILLED USING COPPER FILL PROCESS AND PLATED OVER.

PLATING OPTIONS:

- *ALL AU 10* OPTION: OUTER LAYERS TO BE GOLD PLATED 0.000010" MIN PER MIL-G-45204B, CLASS 00, GRADE A, TYPE I, OVER LOW STRESS NICKEL PLATING 0.000150" MIN PER QQ-N-290, CLASS I.



UNLESS OTHERWISE SPECIFIED DIMENSIONS ARE IN INCHES		TOLERANCES		ANGLES	
DECIMALS	FRACTIONS	ANGLES	DECIMALS	FRACTIONS	ANGLES
.XX	XX	XX	.XX	XX	XX
.XXX	XX	XX	.XXX	XX	XX

NCDRILL		ANALOG DEVICES		ASC DIVISION 804 WOBURN STREET WILMINGTON, MA 01887	
APPROVAL	DATE	TITLE			
DESIGNED	V.J.G. 06/07	ADN4600 CHAR BOARD Z			
CHECKED		SIZE	FSCM NO	DRAWING NUMBER	REV
APPROVED		D		09-A01703	B
MFG ENGINEER		SCALE	1X1	SHEET 1 OF 1	