

Figure 1: Sample Circuit Diagram

NOTE This is only a sample circuit diagram. For detailed specification of the interface see IEC 61158-2. Electrical isolation and shielding is recommended but not defined by the standard.

6.1.2 Line terminators according to IEC 61158-2

Figure 2 shows the line termination including pull-up and pull-down resistors.

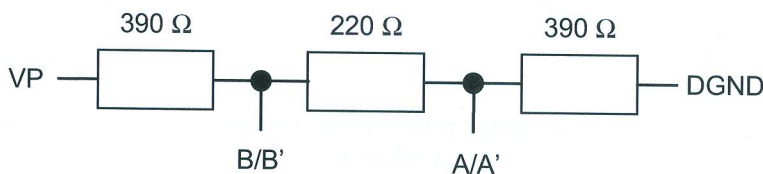


Figure 2: Line Termination

The value of the termination resistor has to be 220 Ω for cable type A as specified in IEC 61158-2, clause 22.

6.1.3 Compatibility of the bus interface according to IEC 61158-2

Table 3 shows the mandatory and optional signals for the example of a 9-pin D-Sub connector.

Table 3: Signals for the example of a 9-pin D-Sub

pin number	RS-485	signal	meaning
1			not connected, see NOTE 1
2		M24V	ground 24V output voltage, see NOTE 2