

IPC/JEDEC J-STD-020E

December 2014

Supersedes IPC/JEDEC J-STD-020D.1

March 2008

JOINT INDUSTRY STANDARD

Moisture/Reflow
Sensitivity
Classification for
Nonhermetic
Surface Mount
Devices



Notice

IPC and JEDEC Standards and Publications are designed to serve the public interest through eliminating misunderstandings between manufacturers and purchasers, facilitating interchangeability and improvement of products, and assisting the purchaser in selecting and obtaining with minimum delay the proper product for his particular need. Existence of such Standards and Publications shall not in any respect preclude any member or nonmember of IPC or JEDEC from manufacturing or selling products not conforming to such Standards and Publications, nor shall the existence of such Standards and Publications preclude their voluntary use by those other than IPC or JEDEC members, whether the standard is to be used either domestically or internationally.

Recommended Standards and Publications are adopted by IPC or JEDEC without regard to whether their adoption may involve patents on articles, materials, or processes. By such action, IPC or JEDEC do not assume any liability to any patent owner, nor do they assume any obligation whatever to parties adopting the Recommended Standard or Publication. Users are also wholly responsible for protecting themselves against all claims of liabilities for patent infringement. The material in this joint standard was developed by the IPC Plastic Chip Carrier Cracking Task Group (B-10a) and the JEDEC JC-14.1 Committee on Reliability Test Methods for Packaged Devices

For Technical Information Contact:

JEDEC
Solid State Technology Association
3103 North 10th Street, Suite 240-S
Arlington, VA 22201-2107
Tel 703 907.0026
Fax 703.907.7501

IPC
3000 Lakeside Drive, Suite 309S
Bannockburn, Illinois
60015-1249
Tel 847 615.7100
Fax 847.615.7105

Please use the Standard Improvement Form shown at the end of this document.



IPC/JEDEC J-STD-020E



Moisture/Reflow Sensitivity Classification for Nonhermetic Surface Mount Devices

A joint standard developed by the IPC Plastic Chip Carrier Cracking Task Group (B-10a) and the JEDEC JC-14.1 Committee on Reliability Test Methods for Packaged Devices

Supersedes:

IPC/JEDEC J-STD-020D.1 March 2008

IPC/JEDEC J-STD-020D August 2007

IPC/JEDEC J-STD-020C July 2004

IPC/JEDEC J-STD-020B July 2002

IPC/JEDEC J-STD-020A April 1999

J-STD-020 -October 1996

JEDEC JESD22-A112

IPC-SM-786A -January 1995

IPC-SM-786 -December 1990

Users of this standard are encouraged to participate in the development of future revisions.

Contact:

JEDEC
Solid State Technology Association
3103 North 10th Street, Suite 240S
Arlington, VA 22201- 2107
Tel 703 907.0026
Fax 703 907.7501

IPC
3000 Lakeside Drive, Suite 309S
Bannockburn, Illinois 60015-1249
Tel 847 615.7100
Fax 847 615.7105

This Page Intentionally Left Blank

Acknowledgment

Members of the IPC Association Connecting Electronics Industries® IPC Plastic Chip Carrier Cracking Task Group (B-10a) and the JEDEC Solid State Technology Association JEDEC JC-14.1 Committee on Reliability Test Methods for Packaged Devices have worked together to develop this document. We would like to thank them for their dedication to this effort.

Any document involving a complex technology draws material from a vast number of sources across many continents. While the principal members of the Joint Moisture Classification Working Group are shown below, it is not possible to include all of those who assisted in the evolution of this standard. To each of them, the members of the IPC and JEDEC extend their gratitude.

IPC Plastic Chip Carrier Cracking Task Group

Chair
Steven R. Martell
Sonoscan, Inc.

JEDEC JC 14.1 Committee

Chair	Vice Chair
Ife Hsu	Gautam Verma
Intel Corporation	Altera Corporation

Joint Moisture Classification Working Group Members

Doug Derry, AccuAssembly	Enrico Galbiati, GEST Labs S.r.l. a Socio Unico	Mumtaz Bora, Peregrine Semiconductor
David Gaydos, ACI Technologies, Inc.	Gergely Csohany, Harman/Becker Automotive Systems Kft.	Arnold Offner, Phoenix Contact
Russell Nowland, Alcatel-Lucent	Keith Newman, Hewlett-Packard Company	Timothy Pitsch, Plexus Corporation
Bradley Smith, Allegro MicroSystems Inc.	Kristen Troxel, Hewlett-Packard Company	Elvira Preecha, Qualcomm Technologies Inc.
Maurice Brodeur, Analog Devices Inc.	Jennie Hwang, H-Technologies Group	Richard Iodice, Raytheon Company
Bill Strachan, ASTA - Portsmouth University	Curtis Grosskopf, IBM Corporation	James Robbins, Raytheon Company
Lyle Burhenn, BAE Systems Platform Solutions	Mario Interrante, IBM Corporation	Jeff Shubrooks, Raytheon Company
Thomas Cleere, BAE Systems Platform Solutions	Paul Krystek, IBM Corporation	Christian Klein, Robert Bosch GmbH
Joseph Kane, BAE Systems Platform Solutions	Charles Reynolds, IBM Corporation	Srinivas Chada, Schlumberger Well Services
Mary Bellon, Boeing Research & Development	Ife Hsu, Intel Corporation	Michelle Ogihara, Seika Machinery Inc.
Tim Chaudhry, Broadcom Corporation	James Maguire, Intel Corporation	Steven Martell, Sonoscan Inc.
Glenn Koscal, Carsem	Stephen Tisdale, Intel Corporation	Francis Classe, Spansion
Francois Monette, Cogiscan Inc.	Mark Kwoka, Intersil Corporation	Brent Beamer, Static Control Components, Inc.
Stuart Longgood, Delphi Electronics and Safety	Quyen Chu, Jabil Circuit, Inc.	Raymond Cirimele, STI Electronics, Inc.
Michael Pepples, Delphi Electronics and Safety	Marty Rodriguez, Jabil Circuit, Inc. (HQ)	Amol Kirtikar, Sud-Chemie Inc. Performance Packaging
Mark Northrup, Dynamic Research and Testing Laboratories, LLC	Girish Wable, Jabil Circuit, Inc. (HQ)	Robert DiMaggio, Sud-Chemie Performance Package
Paul Austen, Electronic Controls Design Inc.	Julie Carlson, JEDEC	Michelle Martin, Sud-Chemie Performance Package
Nicholas Lycoudes, Freescale Semiconductor	Ken McGhee, JEDEC	Steven Kummerl, Texas Instruments Inc.
Deepak Pai, General Dynamics Info. Sys., Inc.	Akikazu Shibata, JPCA-Japan Electronics Packaging and Circuits Association	John Radman, Trace Laboratories - Denver
	Leland Woodall, Keihin Carolina System Technology	Michael Moore, U.S. Army Aviation & Missile Command
	James Mark Bird, MBird and Associates	Joseph Thomas, ZN Technologies
	Kurk Kan, Murata Power Solutions, Inc.	Kevin Weston
	Dongkai Shangguan, National Center for Advanced Packaging, China	

In Memorium

The Joint Committee would like to especially acknowledge Jack T. McCullen and Richard L. Shook for their outstanding contributions and leadership in the development of J-STD-020.

This Page Intentionally Left Blank

Table of Contents

1 PURPOSE	1	4 CLASSIFICATION/RECLASSIFICATION	4
1.1 Scope.....	1	4.1 Classification Temperatures (T_c).....	4
1.2 Background.....	1	4.2 Compatibility with Pb-Free Assembly Rework.....	5
1.3 Terms and Definitions.....	1	4.3 Reclassification.....	5
1.3.1 Accelerated Equivalent Soak.....	1	5 PROCEDURE	6
1.3.2 *Acoustic Microscope.....	2	5.1 Sample Requirements.....	6
1.3.3 *Area Array Package.....	2	5.1.1 Reclassification (Qualified Package without Additional Reliability Testing).....	6
1.3.4 *Classification Temperature (T_c).....	2	5.1.2 Classification/Reclassification and Rework.....	6
1.3.5 Crack.....	2	5.2 Initial Electrical Test.....	6
1.3.6 *Damage Response.....	2	5.3 Initial Inspection.....	6
1.3.7 Dead-Bug (Orientation).....	2	5.4 Bake.....	6
1.3.8 Delamination.....	2	5.5 Moisture Soak.....	6
1.3.9 Downbond Area.....	2	5.6 Reflow.....	7
1.3.10 Floor Life.....	2	5.7 Final External Visual.....	9
1.3.11 Full Body Hot Air Rework.....	2	5.8 Final Electrical Test.....	9
1.3.12 Live-Bug (Orientation).....	2	5.9 Final Acoustic Microscopy.....	9
1.3.13 Manufacturer's Exposure Time (MET).....	2	6 CRITERIA	9
1.3.14 Moisture/Reflow Sensitivity Classification.....	2	6.1 Failure Criteria after Reflow Simulation.....	9
1.3.15 Moisture Sensitivity Level (MSL).....	2	6.2 Criteria Requiring Further Evaluation.....	9
1.3.16 *Package Thickness.....	2	6.2.1 Delamination.....	9
1.3.17 *Peak Package Body Temperature (T_p).....	2	6.2.3 Moisture Induced Body Warpage during Board Assembly of Substrate Based Packages (e.g. BGA, LGA, etc.).....	10
1.3.18 Reclassification.....	2	6.2.4 Bare Die with Polymer Layers.....	10
1.3.18 *Soak.....	2	6.2.5 Non-IC Packages.....	10
1.3.19 Wire-Bond Surface.....	2	6.3 Failure Verification.....	10
2 APPLICABLE DOCUMENTS	3	7 MOISTURE/REFLOW SENSITIVITY CLASSIFICATION	10
2.1 JEDEC.....	3	8 OPTIONAL WEIGHT GAIN/LOSS ANALYSIS	11
2.2 IPC.....	3	8.1 Weight Gain.....	11
2.3 Joint Industry Standards.....	3	8.2 Absorption Curve.....	11
3 APPARATUS	3	8.2.1 Read Points.....	11
3.1 Temperature Humidity Chambers.....	3	8.2.2 Dry Weight.....	11
3.2 Solder Reflow Equipment.....	3	8.2.3 Moisture Soak.....	11
3.2.1 Full Convection (Preferred).....	3	8.2.4 Readouts.....	11
3.2.2 Infrared.....	3	8.3 Desorption Curve.....	12
3.3 Ovens.....	4	8.3.1 Read Points.....	12
3.4 Microscopes.....	4	8.3.2 Baking.....	12
3.4.1 Optical Microscope.....	4	8.3.3 Readouts.....	12
3.4.2 Acoustic Microscope.....	4	9 ADDITIONS AND EXCEPTIONS	12
3.5 Cross-Sectioning.....	4		
3.6 Electrical Test.....	4		
3.7 Weighing Apparatus (Optional).....	4		
3.8 Beaded Thermocouple Temperature Measurement.....	4		

ANNEX A	13
ANNEX B	14

Figures

Figure 5-1	Classification Profile (Not to scale).....	8
------------	--	---

Tables

Table 4-1	SnPb Eutectic Process – Classification Temperatures (T_c)	4
Table 4-2	Pb-Free Process – Classification Temperatures (T_c)	5
Table 5-1	Moisture Sensitivity Levels.....	7
Table 5-2	Classification Profiles	8
Table B-1	Major Changes from Revision D to Revision E	14

Moisture/Reflow Sensitivity Classification for Nonhermetic Surface Mount Devices

1 PURPOSE

The purpose of this standard is to identify the classification level of nonhermetic surface mount devices (SMDs) that are sensitive to moisture-induced stress so that they can be properly packaged, stored, and handled to avoid damage during assembly solder reflow attachment and/or repair operations.

This standard may be used to determine what classification level should be used for Surface Mount Device (SMD) package qualification. Passing the criteria in this test method is not sufficient by itself to provide assurance of long-term reliability. MSL (moisture sensitivity level) ratings generated by this document are utilized to determine the soak conditions for pre-conditioning as per JESD22-A113.

Note: A related document, J-STD-075 (Classification of Non-IC Electronic Components for Assembly Processes) identifies and includes PSL (process sensitive level) classification requirements for non-ICs (non-integrated circuits) in addition to referencing MSL (moisture sensitivity level) classification requirements from this document. Some ICs may be process sensitive. Please refer to J-STD-075 for potential future PSL classification requirements for ICs.

1.1 Scope This classification procedure applies to all nonhermetic SMDs in packages, which, because of absorbed moisture, could be sensitive to damage during solder reflow. The term SMD as used in this document means plastic encapsulated surface mount packages and other packages made with moisture-permeable materials. The categories are intended to be used by SMD producers to inform users (board assembly operations) of the level of moisture sensitivity of their product devices, and by board assembly operations to ensure that proper handling precautions are applied to moisture/reflow sensitive devices. If no major changes have been made to a previously qualified SMD package, this method may be used for reclassification according to 4.3.

This standard cannot address all of the possible component, board assembly and product design combinations. However, the standard does provide a test method and criteria for commonly used technologies. Where uncommon or specialized components or technologies are necessary, the development should include customer/manufacturer involvement and the criteria should include an agreed definition of product acceptance.

SMD packages classified to a given moisture sensitivity level by using procedures or criteria defined within any previous version of J-STD-020, JESD22-A112 (rescinded), or IPC-SM-786 (rescinded) do not need to be reclassified to the current revision unless a change in classification level or a higher peak classification temperature is desired. Annex B provides an overview of major changes from Revision D to Revision E of this document.

Note: If the procedures in this document are used on packaged devices that are not included in this specification's scope, the failure criteria for such packages must be agreed upon by the device supplier and their end user.

1.2 Background The vapor pressure of moisture inside a nonhermetic package increases greatly when the package is exposed to the high temperature of solder reflow. Under certain conditions, this pressure can cause internal delamination of the packaging materials from the die and/or lead-frame/substrate, internal cracks that do not extend to the outside of the package, bond damage, wire necking, bond lifting, die lifting, thin film cracking, or cratering beneath the bonds. In the most severe case, the stress can result in external package cracks. This is commonly referred to as the "popcorn" phenomenon because the internal stress causes the package to bulge and then crack with an audible "pop." SMDs are more susceptible to this problem than through-hole parts because they are exposed to higher temperatures during reflow soldering. The reason for this is that the soldering operation must occur on the same side of the board as the SMD device. For through-hole devices, the soldering operation occurs under the board that shields the devices from the hot solder.

1.3 Terms and Definitions Other than the following, the definitions of terms used in this standard are in accordance with IPC-T-50. Terms marked with an asterisk (*) are direct excerpts of IPC-T-50 and are reprinted here for convenience.

1.3.1 Accelerated Equivalent Soak A soak at a higher temperature for a shorter time (compared to the standard soak), to provide roughly the same amount of moisture absorption. See also "Soak."

1.3.2 *Acoustic Microscope Equipment that creates an image using ultrasound to view a specimen's surface or subsurface features, including defects and damage. See J-STD-035 for more information.

1.3.3 *Area Array Package A package that has terminations arranged in a grid on the bottom of the package and contained within the package outline.

1.3.4 *Classification Temperature (T_c) The maximum body temperature at which the component manufacturer guarantees the component MSL as noted on the caution and/or bar code label (per J-STD-033).

1.3.5 Crack A separation within a bulk material. See also "Delamination."

1.3.6 *Damage Response All irreversible changes caused by exposure to a reflow soldering profile.

1.3.7 Dead-Bug (Orientation) The orientation of the package with the terminals facing up.

1.3.8 Delamination An interfacial separation between two materials intended to be bonded. See also "Crack."

1.3.9 Downbond Area An area for a wire bond on the die paddle, whose dimensions equal those of a single bond pad on the die.

1.3.10 Floor Life The allowable time period after removal from a moisture barrier bag, dry storage, or dry bake and before the solder reflow process.

Note: For the purposes of this standard "Unlimited" floor life only refers to moisture/reflow related failures and does not take into consideration other failure mechanisms or shelf life issues due to long term storage. See JEP160.

1.3.11 Full Body Hot Air Rework The process of heating a package by directing heated gas at the package body in order to melt only that package's solder connections.

1.3.12 Live-Bug (Orientation) The orientation of the package when resting on its terminals.

1.3.13 Manufacturer's Exposure Time (MET) The maximum cumulative time after bake that components may be exposed to ambient conditions prior to shipment to the end user.

1.3.14 Moisture/Reflow Sensitivity Classification The characterization of a component's susceptibility to damage due to absorbed moisture when subjected to reflow soldering.

1.3.15 Moisture Sensitivity Level (MSL) A rating indicating a component's susceptibility to damage due to absorbed moisture when subjected to reflow soldering.

1.3.16 *Package Thickness The component thickness excluding external terminals (balls, bumps, lands, leads) and/or non-integral heat sinks.

1.3.17 *Peak Package Body Temperature (T_p) The highest temperature that an individual package body reaches during MSL classification.

1.3.18 Reclassification The process of assigning a new moisture sensitivity level to a previously classified device.

1.3.18 *Soak The exposure of a component for a specified time at a specified temperature and humidity. See also "Accelerated Equivalent Soak."

1.3.19 Wire-Bond Surface The area where wire bonds are typically placed.

2 APPLICABLE DOCUMENTS

2.1 JEDEC¹

JEP140 Beaded Thermocouple Temperature Measurement of Semiconductor Packages

JEP160 Long Term Storage Guidelines for Electronic Solid State Wafers, Dice, and Devices

JESD22-A120 Test Method for the Measurement of Moisture Diffusivity and Water Solubility in Organic Materials Used in Integrated Circuits

JESD22-A113 Preconditioning Procedures of Plastic Surface Mount Devices Prior to Reliability Testing

JESD22-B101 External Visual

JESD22-B108 Co-planarity Test for Surface-Mount Semiconductor Devices

JESD22-B112 High Temperature Package Warpage Measurement Methodology

JESD47 Stress Test Driven Qualification Specification

JESD625 Requirements for Handling Electrostatic Discharge Sensitive (ESD) Devices

2.2 IPC²

IPC-TM-650 Test Methods Manual³

2.1.1 Microsectioning

2.1.1.2 Microsectioning - Semi or Automatic Technique Microsection Equipment

2.3 Joint Industry Standards⁴

J-STD-033 Standard for Handling, Packing, Shipping and Use of Moisture/Reflow Sensitive Surface Mount Devices

J-STD-035 Acoustic Microscopy for Nonhermetic Encapsulated Electronic Components

J-STD-075 Classification of Non-IC Electronic Components for Assembly Processes

3 APPARATUS

3.1 Temperature Humidity Chambers Moisture chamber(s), capable of operating at 85 °C/85% RH, 85 °C/60% RH, 60 °C/60% RH, and 30 °C/60% RH. Within the chamber working area, temperature tolerance must be ± 2 °C and the RH tolerance must be $\pm 3\%$ RH.

3.2 Solder Reflow Equipment

3.2.1 Full Convection (Preferred) Full convection reflow system capable of maintaining the reflow profiles required by this standard.

3.2.2 Infrared Infrared (IR)/convection solder reflow equipment capable of maintaining the reflow profiles required by this standard. It is required that this equipment use IR to heat only the air and not directly impinge upon the SMD Packages/ devices under test.

Note: The moisture sensitivity classification test results are dependent upon the package body temperature (rather than the mounting substrate and/or package terminal temperature).

1. www.jedec.org

2. www.ipc.org

3. Current and revised IPC Test Methods are available on the IPC website (www.ipc.org/html/testmethods.htm).

4. www.ipc.org

3.3 Ovens Bake oven capable of operating at 125 +5/-0 °C.

3.4 Microscopes

3.4.1 Optical Microscope Optical Microscope (40X for external and 100X for cross-section exam, higher magnification might be required for verification).

3.4.2 Acoustic Microscope Typically a scanning acoustic microscope with C-Mode and Through Transmission capability. It should be capable of measuring a minimum delamination of 5% of the area being evaluated.

Note 1: The acoustic microscope is used to detect cracking and delamination. However, the presence of delamination does not necessarily indicate a pending reliability problem. The reliability impact of delamination must be established for a particular die/package system.

Note 2: Refer to IPC/JEDEC J-STD-035 for operation of the acoustic microscope.

3.5 Cross-Sectioning Micro-sectioning equipment as recommended per IPC-TM-650, Methods 2.1.1 and 2.1.1.2 or other applicable document.

3.6 Electrical Test Electrical test equipment with capabilities to perform appropriate testing on devices.

3.7 Weighing Apparatus (Optional) Apparatus capable of weighing the package to a resolution of 1 microgram. This apparatus must be maintained in a draft-free environment, such as a cabinet. It is used to obtain absorption and desorption data on the devices under test (see Section 8).

3.8 Beaded Thermocouple Temperature Measurement Refer to JEP140 for guidance on procedures to accurately and consistently measure the temperature of components during exposure to thermal excursions. JEP140 guideline applications can include, but is not limited to, temperature profile measurement in reliability test chambers and solder reflow operations that are associated with component assembly to printed wiring boards (PWBs).

4 CLASSIFICATION/RECLASSIFICATION

Refer to 4.3 for guidance on reclassification of previously qualified/classified SMDs.

Engineering studies have shown that thin, small volume SMD packages reach higher body temperatures during reflow soldering to boards that have been profiled for larger packages. Therefore, technical and/or business issues normally require thin, small volume SMD packages (reference Tables 4-1 and 4-2) to be classified at higher reflow temperatures. To accurately measure actual peak package body temperatures, refer to JEP140 for recommended thermocouple use.

4.1 Classification Temperatures (T_c) Previously classified SMDs should only be reclassified by the manufacturer. Users should refer to the “Moisture Sensitivity” label on the bag to determine at which reflow temperature the SMD packages were classified.

Unless labeled otherwise, level 1 SMD packages are considered to be classified at 220 °C.

If supplier and user agree, components can be classified at temperatures other than those in Tables 4-1 and 4-2. If a different T_c is used, then the temperature used **shall** be written on the caution label as defined in J-STD-033.

Table 4-1 SnPb Eutectic Process – Classification Temperatures (T_c)

Package Thickness	Volume mm ³ <350	Volume mm ³ ≥350
<2.5 mm	235 °C	220 °C
≥2.5 mm	220 °C	220 °C

Table 4-2 Pb-Free Process – Classification Temperatures (T_c)

Package Thickness	Volume mm ³ <350	Volume mm ³ 350 - 2000	Volume mm ³ >2000
<1.6 mm	260 °C	260 °C	260 °C
1.6 mm - 2.5 mm	260 °C	250 °C	245 °C
>2.5 mm	250 °C	245 °C	245 °C

Note 1: Package “volume” excludes external terminals (e.g., balls, bumps, lands, leads) and/or non-integral heat sinks. Package volume includes the external dimensions of the package body, regardless if it has a cavity or is a passive package style.

Note 2: At the discretion of the device manufacturer, but not the board assembler/user, the maximum peak package body temperature (T_p) can exceed the values specified in table 4-1 or 4-2. The use of a higher T_p does not change the classification temperature (T_c).

Note 3: The maximum component temperature reached during reflow depends on package thickness and volume. The use of convection reflow processes reduces the thermal gradients between packages. However, thermal gradients due to differences in thermal mass of SMD packages may still exist.

Note 4: Moisture sensitivity levels of components intended for use in a Pb-free assembly process **shall** be evaluated using the Pb-free classification temperatures and profiles defined in Tables 4-2 and 5-2, whether or not Pb-free.

Note 5: SMD packages classified to a given moisture sensitivity level by using Procedures or Criteria defined within any previous version of J-STD-020, JESD22-A112 (rescinded), IPC-SM-786 (rescinded) do not need to be reclassified to the current revision unless a change in classification level or a higher peak classification temperature is desired.

4.2 Compatibility with Pb-Free Assembly Rework Pb-free area array components (classified per Table 4-2) should be capable of assembly rework at a maximum of 260 °C within 8 hours of removal from dry storage or bake, per J-STD-033 or for long term storage per the guidelines of JEP160. Components that do not meet this assembly rework requirement or that the supplier does not support 260 °C rework **shall** be so specified by the component manufacturer. To verify this capability for components classified at a temperature below 260 °C, a sample of the size per 5.1.2 **shall** be soaked per level 6 conditions (see Table 5-1) using a time on label (TOL) of 8 hours, and subjected to a single reflow cycle with T_p of not less than 260 °C. All devices in the sample **shall** pass electrical test and have a damage response (per 6.1 and 6.2) not greater than that observed for the same package at its rated MSL level. Rework compatibility verification is not required for area array components rated at 260 °C. or peripheral leaded metal lead frame packages that do not require full body hot air rework.

4.3 Reclassification SMD packages previously classified to a moisture sensitivity level and classification temperature (T_c) may be reclassified if the damage response (e.g., delamination/cracking) at the more severe condition for items listed in 6.1 and 6.2 is less than, or equal to, the damage response at the original classification condition.

If no major changes have been made to a previously qualified SMD package, this method may be used for reclassification to an improved level (i.e., longer floor life) at the same reflow temperature. The reclassification level cannot be improved by more than one level without additional reliability testing. Reclassification to level 1 requires additional reliability testing.

If no major changes have been made to a previously qualified SMD package, this method may be used for reclassification at a higher reflow temperature providing the moisture level remains the same or degrades to a more sensitive level.

No SMD packages classified as moisture sensitive by any previous version of J-STD-020, JESD22-A112 (rescinded), or IPC-SM-786 (rescinded) may be reclassified as non-moisture sensitive (level 1) without additional reliability stress testing (e.g., JESD22-A113 and JESD47 or the semiconductor manufacturer’s in-house procedures).

To minimize testing, the results from a given SMD package may be generically accepted to cover all other devices which are manufactured in the same package, using the same packaging materials (e.g., die attach, mold compound, and/or die coating, etc.), with the die using the same wafer fabrication technology, and with die pad dimensions not greater than those qualified.

The following attributes could affect the moisture sensitivity of a device and may require reclassification:

- Die attach material/process.
- Number of pins.
- Encapsulation (mold compound or glob top) material/process.
- Die pad area and shape.
- Body size.
- Passivation/die coating.

- Leadframe, substrate, and/or heat spreader design/material/finish.
- Die size/thickness.
- Wafer fabrication technology/process.
- Interconnect.
- Lead lock taping size/location as well as material.

5 PROCEDURE

The recommended procedure is to start testing at the lowest moisture sensitivity level the evaluation package is reasonably expected to pass (based on knowledge of other similar evaluation packages).

In the case of equipment malfunction, operator error, or electrical power loss, engineering judgment **shall** be used to ensure that the minimum intent/requirements of this specification are met.

5.1 Sample Requirements

5.1.1 Reclassification (Qualified Package without Additional Reliability Testing) For a qualified SMD package being reclassified without additional reliability testing, select a minimum sample of 22 units for each moisture sensitivity level to be tested. A minimum of two nonconsecutive assembly lots must be included in the sample with each lot having approximately the same representation. Sample units **shall** have completed all manufacturing processing required prior to shipment. Sample groups may be run concurrently on one or more moisture sensitivity levels.

5.1.2 Classification/Reclassification and Rework Select a minimum sample of 11 units for each moisture sensitivity level to be tested. A minimum of two nonconsecutive assembly lots must be included in the sample with each lot having approximately the same representation. Sample units **shall** have completed all manufacturing processes required prior to shipment. Sample groups may be run concurrently on one or more moisture sensitivity levels. Testing must be continued until a passing level is found.

SMD packages should not be reclassified by the user unless approved by the supplier.

5.2 Initial Electrical Test Test appropriate electrical parameters (e.g., data sheet values, in house specifications, etc.). Replace any components, while maintaining the sample requirements of 5.1.2, which fail to meet tested parameters.

5.3 Initial Inspection Perform an external visual (at 40X) and acoustic microscope examination on all components to establish a baseline for the cracking/delamination criteria in 6.2.1.

Note: This standard does not consider or establish any accept/reject criteria for delamination at initial/time zero inspection.

5.4 Bake Bake the sample for 24 hours minimum at 125 +5/-0 °C. This step is intended to remove moisture from the package so that it will be “dry.”

Note 1: This time/temperature may be modified if desorption data on the particular device under test shows that a different condition is required to obtain a “dry” package when starting in the wet condition for 85 °C/85% RH (see 8.3).

Note 2: If a bake test is interrupted for greater than 15 minutes; then the total time of the interruption should be excluded from the bake time. The interruption time should be accounted and no greater than 1 hour, then re-incorporated to ensure minimum of 24 hours. For instance, if the interruption was 45 minute, then the total bake test time would be 24 hours and 45 minutes. If greater than 1 hour the bake should be restarted for a full 24 hours.

5.5 Moisture Soak Place devices in a clean, dry, shallow container so that the package bodies do not touch or overlap each other. Submit each sample to the appropriate soak requirements shown in Table 5-1. At all times parts should be handled using proper ESD procedures in accordance with JESD625.

Table 5-1 Moisture Sensitivity Levels

LEVEL	FLOOR LIFE ⁴		SOAK REQUIREMENTS ³				
			STANDARD		ACCELERATED EQUIVALENT ¹		
					eV 0.40-0.48	eV 0.30-0.39	CONDITION
TIME	CONDITION	TIME (hours)	CONDITION	TIME (hours)	TIME (hours)	CONDITION	
1	Unlimited	≤30 °C/85% RH	168 +5/-0	85 °C/85% RH	NA	NA	NA
2	1 year	≤30 °C/60% RH	168 +5/-0	85 °C/60% RH	NA	NA	NA
2a	4 weeks	≤30 °C/60% RH	696 ² +5/-0	30 °C/60% RH	120 +1/-0	168 +1/-0	60 °C/60% RH
3	168 hours	≤30 °C/60% RH	192 ² +5/-0	30 °C/60% RH	40 +1/-0	52 +1/-0	60 °C/60% RH
4	72 hours	≤30 °C/60% RH	96 ² +2/-0	30 °C/60% RH	20 +0.5/-0	24 +0.5/-0	60 °C/60% RH
5	48 hours	≤30 °C/60% RH	72 ² +2/-0	30 °C/60% RH	15 +0.5/-0	20 +0.5/-0	60 °C/60% RH
5a	24 hours	≤30 °C/60% RH	48 ² +2/-0	30 °C/60% RH	10 +0.5/-0	13 +0.5/-0	60 °C/60% RH
6	Time on Label (TOL)	≤30 °C/60% RH	TOL	30 °C/60% RH	NA	NA	NA

Note 1: CAUTION - To use the “accelerated equivalent” soak conditions, correlation of damage response (including electrical, after soak and reflow), should be established with the “standard” soak conditions. Alternatively, if the known activation energy (eV) for moisture diffusion of the package materials is in the range of 0.40 - 0.48 eV or 0.30 - 0.39 eV, the “accelerated equivalent” may be used. Accelerated soak times may vary due to material properties (e.g., mold compound, encapsulant, etc.). JEDEC document JESD22-A120 provides a method for determining the eV.

Note 2: The standard soak time includes a default value of 24 hours for semiconductor manufacturer’s exposure time (MET) between bake and bag and includes the maximum time allowed out of the bag at the distributor’s facility.

If the actual MET is less than 24 hours, the soak time may be reduced. For soak conditions of 30 °C/60% RH, the soak time is reduced by 1 hour for each hour the MET is less than 24 hours. For soak conditions of 60 °C/60% RH, the soak time is reduced by 1 hour for each 5 hours the MET is less than 24 hours.

If the actual MET is greater than 24 hours the soak time must be increased. If soak conditions are 30 °C/60% RH, the soak time is increased 1 hour for each hour that the actual MET exceeds 24 hours. If soak conditions are 60 °C/60% RH, the soak time is increased 1 hour for each 5 hours that the actual MET exceeds 24 hours.

Note 3: Supplier may extend the soak times at their own risk.

Note 4: “Floor Life” only relates to moisture/reflow related failures and does not take into consideration other failure mechanisms or “shelf life” issues due to long term storage.

Note 5: Table 5-1 accelerated soak requirements may not apply to mold compounds that do not contain fillers.

5.6 Reflow Not sooner than 15 minutes and not longer than 4 hours after removal from the temperature/humidity chamber, subject the sample to 3 cycles of the appropriate reflow conditions as defined in Table 5-2 and Figure 5-1. If the timing between removal from the temperature/humidity chamber and initial reflow cannot be met, then the parts must be rebaked and resoaked according to 5.4 and 5.5. The time between reflows **shall** be 5 minutes minimum and 60 minutes maximum.

Note 1: All temperatures refer to the center of the package, measured on the package body surface that is facing up during assembly reflow (e.g., live-bug orientation).

If parts are reflowed in other than the normal live bug assembly reflow orientation, (i.e., dead-bug orientation), T_p **shall** be within ± 2 °C of the live bug T_p and still meet the T_c requirements, otherwise the profile **shall** be adjusted to achieve the latter.

To accurately measure actual peak package body temperatures refer to JEP140 for recommended thermocouple use.

Note 2: The oven should be loaded with the same configuration or verified equivalent thermal load when running parts or being profiled.

Table 5-2 Classification Profiles

Profile Feature	Sn-Pb Eutectic Assembly	Pb-Free Assembly
Preheat/Soak		
Temperature Min (T_{smin})	100 °C	150 °C
Temperature Max (T_{smax})	150 °C	200 °C
Time (t_s) from (T_{smin} to T_{smax})	60-120 seconds	60-120 seconds
Ramp-up rate (T_L to T_p)	3 °C/second max.	3 °C/second max.
Liquidous temperature (T_L)	183 °C	217 °C
Time (t_L) maintained above T_L	60-150 seconds	60-150 seconds
Peak package body temperature (T_p)	For users T_p must not exceed the Classification temp in Table 4-1. For suppliers T_p must equal or exceed the Classification temp in Table 4-1.	For users T_p must not exceed the Classification temp in Table 4-2. For suppliers T_p must equal or exceed the Classification temp in Table 4-2.
Time (t_p)* within 5 °C of the specified classification temperature (T_c), see Figure 5-1.	20* seconds	30* seconds
Ramp-down rate (T_p to T_L)	6 °C/second max.	6 °C/second max.
Time 25 °C to peak temperature	6 minutes max.	8 minutes max.

* Tolerance for peak profile temperature (T_p) is defined as a supplier minimum and a user maximum.

Note 1: All temperatures refer to the center of the package, measured on the package body surface that is facing up during assembly reflow (e.g., live-bug). If parts are reflowed in other than the normal live bug assembly reflow orientation (i.e., dead-bug), T_p shall be within ± 2 °C of the live bug T_p and still meet the T_c requirements, otherwise, the profile shall be adjusted to achieve the latter. To accurately measure actual peak package body temperatures, refer to JEP140 for recommended thermocouple use.

Note 2: Reflow profiles in this document are for classification/preconditioning and are not meant to specify board assembly profiles. Actual board assembly profiles should be developed based on specific process needs and board designs and should not exceed the parameters in this table.

For example, if T_c is 260 °C and time T_p is 30 seconds, this means the following for the supplier and the user:

- For a supplier: The peak temperature must be at least 260 °C. The time above 255 °C must be at least 30 seconds.
- For a user: The peak temperature must not exceed 260 °C. The time above 255 °C must not exceed 30 seconds.

Note 3: All components in the test load shall meet the classification profile requirements.

Note 4: SMD packages classified to a given moisture sensitivity level by using Procedures or Criteria defined within any previous version of J-STD-020, JESD22-A112 (rescinded), IPC-SM-786 (rescinded) do not need to be reclassified to the current revision unless a change in classification level or a higher peak classification temperature is desired.

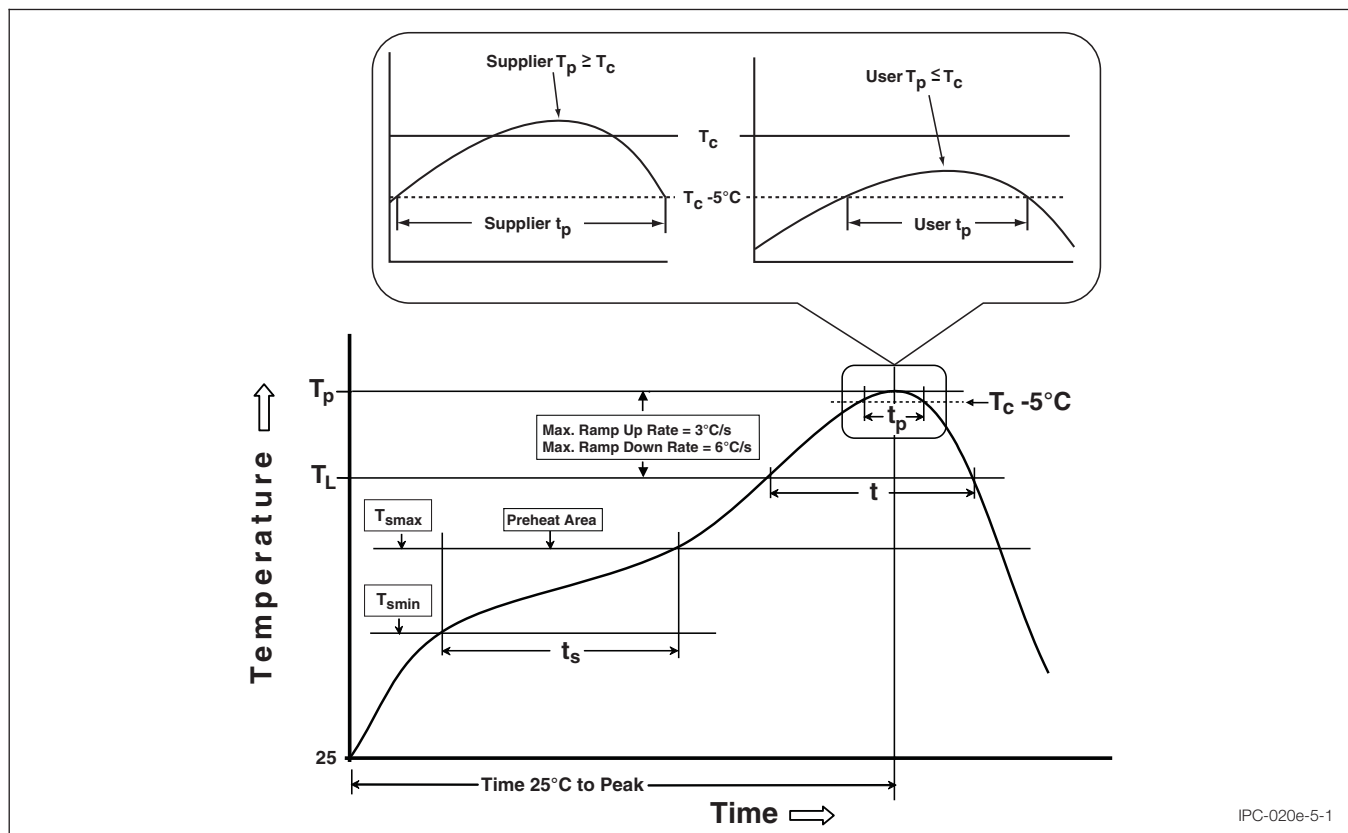


Figure 5-1 Classification Profile (Not to scale)

5.7 Final External Visual Examine the devices using an optical microscope (at 40X) to look for external cracks.

5.8 Final Electrical Test Perform appropriate electrical testing on all devices, (e.g., data sheet values, in-house specifications, etc.).

Note: Considerations should be taken for lead oxidation or other mechanisms due to baking that may affect the electrical testing of the devices.

5.9 Final Acoustic Microscopy Perform acoustic microscope analysis on all devices.

6 CRITERIA

6.1 Failure Criteria after Reflow Simulation If one or more devices in the test sample denoted in 5.1 fail, the package **shall** be considered to have failed the tested level.

A device is considered a failure if it exhibits any of the following:

- a. External crack visible using 40X optical microscope. It is highly desired to use 100X optical magnification or low vacuum scanning electron microscopy (SEM) to better observe any cracks that could be precursors to problems during the stress of operational life.
- b. Electrical test failure.
- c. Internal crack that intersects a bond wire, ball bond, or wedge bond.
- d. Internal crack extending from any lead finger to any other internal feature (lead finger, chip, die attach paddle).
- e. Internal crack extending more than $2/3$ the distance from any internal feature to the outside of the package.
- f. Changes in package body flatness caused by warpage, swelling, or bulging not visible to the naked eye per JESD22-B101. If parts still meet co-planarity and standoff dimensions as measured at room temperature per JESD22-B108, they **shall** be considered passing.

If the components pass the requirements of 6.1, and there is no evidence of cracks observed by acoustic microscopy or other means, the component is considered to pass that level of moisture sensitivity. If internal mold compound cracks are indicated by acoustic microscopy, they must be considered a failure or verified that it has not failed the criteria above using polished cross sections through the identified site.

Note 1: For packages known to be sensitive to vertical cracks, it is recommended that polished cross sections be used to confirm the nonexistence of near vertical cracks within the mold compound or encapsulant.

Note 2: Failing SMD packages must be evaluated to a higher numeric level of moisture sensitivity (i.e., more susceptible) using a new set of samples.

6.2 Criteria Requiring Further Evaluation Delamination is not necessarily a cause for rejection. To evaluate the impact of delamination on device reliability, the semiconductor manufacturer may either meet the delamination requirements shown in 6.2.1 or perform reliability assessment using JESD22-A113 and JESD47 or the semiconductor manufacturer's in-house procedures. The reliability assessment may consist of stress testing, historical generic data analysis, etc. Annex A shows the logic flow diagram for the implementation of these criteria.

If the SMD Packages pass electrical tests and there is delamination on the back side of the die paddle, heat spreader, or die back side (lead on chip only), but there is no evidence of cracking or other delamination and they still meet specified dimensional criteria, the SMD Packages are considered to pass that level of moisture sensitivity.

6.2.1 Delamination The following delamination change criteria for the specific package type are measured from pre-moisture soak to post reflow. A delamination change is the difference between pre- and post-reflow delamination. The percent (%) delamination or delamination change is calculated in relation to the total area being evaluated.

6.2.1.1 Metal Lead-Frame Packages:

- a. No delamination on the active side of the die.
- b. No delamination on any wire bonding surface including the downbond area or the lead-frame of lead on chip (LOC) devices.

- c. No delamination change >10% along any polymeric film bridging any metallic features that is designed to be isolated (verifiable by through transmission acoustic microscopy).
- d. No delamination/cracking >50% of the die attach area:
 1. In packages with exposed die pad used for thermal conductivity or
 2. For devices that require electrical contact to the backside of the die
- e. No surface-breaking feature delaminated over its entire length. A surface-breaking feature includes lead fingers, tie bars, heat spreader alignment features, heat slugs, etc.

6.2.1.2 Substrate Based Packages (e.g., BGA, LGA, etc.):

- a. No delamination on the active side of the die.
- b. No delamination on any wire bonding surface of the laminate.
- c. No delamination change >10% along the polymer potting or molding compound/laminate interface for cavity and over-molded packages.
- d. No delamination change >10% along the solder mask/laminate resin interface.
- e. No delamination change >10% within the laminate.
- f. No delamination/cracking change >10% through the die attach region.
- g. No delamination/cracking between underfill resin and chip or underfill resin and substrate/solder mask.
- h. No surface-breaking feature delaminated over its entire length. A surface-breaking feature includes lead fingers, laminate, laminate metallization, PTH, heat slugs, etc.

Note 1: On substrate based packages, the C-mode acoustic image is not easy to interpret. Through Transmission Acoustic Imaging is recommended to supplement and verify the C-mode images because it is easier to interpret and more reliable. If it is necessary to verify results or determine at what level in the package the cracking/delamination is occurring, cross-sectional analysis should be used.

6.2.3 Moisture Induced Body Warpage during Board Assembly of Substrate Based Packages (e.g. BGA, LGA, etc.)

Moisture Induced warpage could result in solder bridging or open connections during board assembly solder attachment operations. It is known that ingressed moisture can either increase or decrease the total package body warpage depending on the specific design of the component. Total package body warpage can be a function of the moisture content and can be affected by the ramp rates and dwells used to measure the total warpage effect at elevated temperatures. Package body warpage measured per JESD22-B112 should be characterized during package development and any time there are changes of the type denoted in section 4.3. Ability to attach components that exhibit warpage can be verified by using board assembly.

6.2.4 Bare Die with Polymer Layers Currently J-STD-020 does not provide failure criteria for the package style of bare die with polymer layers. Any party choosing to use the procedures within this standard to determine MSL rating for this type of package style is responsible for defining the appropriate failure criteria to ensure the long term reliability of the device.

6.2.5 Non-IC Packages Currently J-STD-020 does not provide failure criteria for non-IC package styles. Any party choosing to use the procedure within this standard to determine the MSL rating for a non-IC package is responsible for defining the appropriate failure criteria to ensure the long term reliability of the device.

6.3 Failure Verification All failures should be analyzed to confirm that the failure mechanism is associated with moisture sensitivity. If there are no reflow moisture-sensitive-induced failures in the level selected, the component meets the tested level of moisture sensitivity.

If the acoustic microscope scans show failure to any of the criteria listed in 6.2.1, the SMD Packages **shall** be tested to a higher numeric level of moisture sensitivity or subjected to a reliability assessment using JESD22-A113 and JESD47 or the semiconductor manufacturer's in-house procedures.

7 MOISTURE/REFLOW SENSITIVITY CLASSIFICATION

If a device passes level 1, it is classified as not moisture sensitive and does not require dry pack. Other factors beyond MSL may need to be considered, such as those included in JEP160, for long term storage.

If a device fails level 1 but passes a higher numerical level, it is classified as moisture sensitive and must be dry packed in accordance with J-STD-033, and, if required for long term storage, per the guidelines of JEP160 for long term storage.

If a device will pass only level 6, it is classified as extremely moisture sensitive and dry pack will not provide adequate protection. If this product is shipped, the customer must be advised of its classification. The supplier must also include a warning label with the device indicating that it either is socket mounted, or baked dry within TOL (Time on Label) before reflow soldering. The minimum bake time and temperature should be determined from desorption studies of the device under test (see 8.3).

8 OPTIONAL WEIGHT GAIN/LOSS ANALYSIS

8.1 Weight Gain Weight gain analysis (absorption) can be very valuable in determining estimated floor life (the time from removal of a device from dry pack until it absorbs sufficient moisture to be at risk during reflow soldering). Weight loss analysis (desorption) is valuable in determining the bake time required to remove excess moisture from a device so that it will no longer be at risk during reflow soldering. Weight gain/loss is calculated using an average for the entire sample. It is recommended that ten (10) components be used in the sample. Dependent on weight, components may be weighed individually or in group(s).

Final weight gain = (wet weight - dry weight)/dry weight.

Final weight loss = (wet weight - dry weight)/wet weight.

Interim weight gain = (present weight - dry weight)/dry weight.

Interim weight loss = (wet weight - present weight)/wet weight.

“Wet” is relative and means the package is exposed to moisture under specific temperature and humidity conditions.

“Dry” is specific and means no additional moisture can be removed from the package at 125 °C as per 8.2.2.

8.2 Absorption Curve

8.2.1 Read Points The X-axis (time) read points should be selected for plotting the absorption curve. For the early readings, points should be relatively short (24 hours or less) because the curve will have a steep initial slope. Later readings may be spread out further (10 days or more) as the curve becomes asymptotic. The Y-axis (weight gain) should start with “0” and increase to the saturated weight gain. Most devices will reach saturation between 0.3% and 0.4% when stored at 85 °C/85% RH. Use the formula in 8.1. Devices **shall** be kept at room ambient between removal from the oven or chamber and weighing and subsequent reinsertion into the oven or chamber.

8.2.2 Dry Weight The dry weight of the sample **shall** be determined first by baking the sample for 24 hours at 125 +5/-0 °C; continued baking and weighing of the sample every 12 hours is recommended until no further weight loss is observed to ensure that the devices are dry. The dry weight is determined when no further weight loss is observed after two consecutive measurements with a minimum baking interval of 12 hours. Characterization outside recommended 12 hour intervals will possibly require more data points to determine weight loss stabilization and prolong this process.

Within 1 hour after removal from the oven, weigh the devices using the optional equipment in 3.7 and determine an average dry weight per 8.1. For small SMDs (less than 1.5 mm total height), devices should be weighed within 30 minutes after removal from oven.

Note: If bake is interrupted for greater than 15 minutes the total time of the interruption should be added to the bake time. The interruption time should be accounted and no greater than 1 hour, then re-incorporated to ensure minimum of 24 hours. For instance, if the interruption was 45 minute, then the total bake test time would be 24 hours and 45 minutes. If greater than 1 hour the bake should be restarted for a full 24 hours.

8.2.3 Moisture Soak Within 1 hour after weighing, place the devices in a clean, dry, shallow container so that the package bodies do not touch each other. Place the devices in the desired temperature/humidity condition for the desired length of time.

8.2.4 Readouts Upon removal of the devices from the temperature/humidity chamber, allow devices to cool for at least 15 minutes. Within 1 hour after removal from the chamber, weigh the devices. For small SMDs (less than 1.5 mm total height), devices should be weighed within 30 minutes after removal from the chamber. After the devices are weighed, follow the procedure in 8.2.3 for placing the devices back in the temperature/humidity chamber. No more than 2 hours total time should elapse between removal of devices from the temperature/humidity chamber and their return to the chamber.

Continue alternating between 8.2.3 and 8.2.4 until the devices reach saturation as indicated by no additional increase in moisture absorption or until soaked to the maximum time of interest.

8.3 Desorption Curve A desorption curve can be plotted using devices that have reached saturation as determined in 8.2.

8.3.1 Read Points The suggested read points on the X-axis are 12 hour intervals. The Y-axis should run from “0” weight gain to the saturated value as determined in 8.2.

8.3.2 Baking Within 1 hour (but not sooner than 15 minutes) after removal of the saturated devices from the temperature/humidity chamber, place the devices in a clean, dry, shallow container so that the package bodies do not touch each other. Place the devices in the bake oven at the desired temperature for the desired time.

8.3.3 Readouts At the desired read point; remove the devices from the bake oven. Within 1 hour after removal of the devices from the bake oven, remove the devices from the container and determine their average weight using the optional equipment in 3.7 and formula in 8.1.

Within 1 hour after weighing the devices, place them in a clean, dry, shallow container so that the package bodies do not touch each other. Return the devices to the bake oven for the desired time.

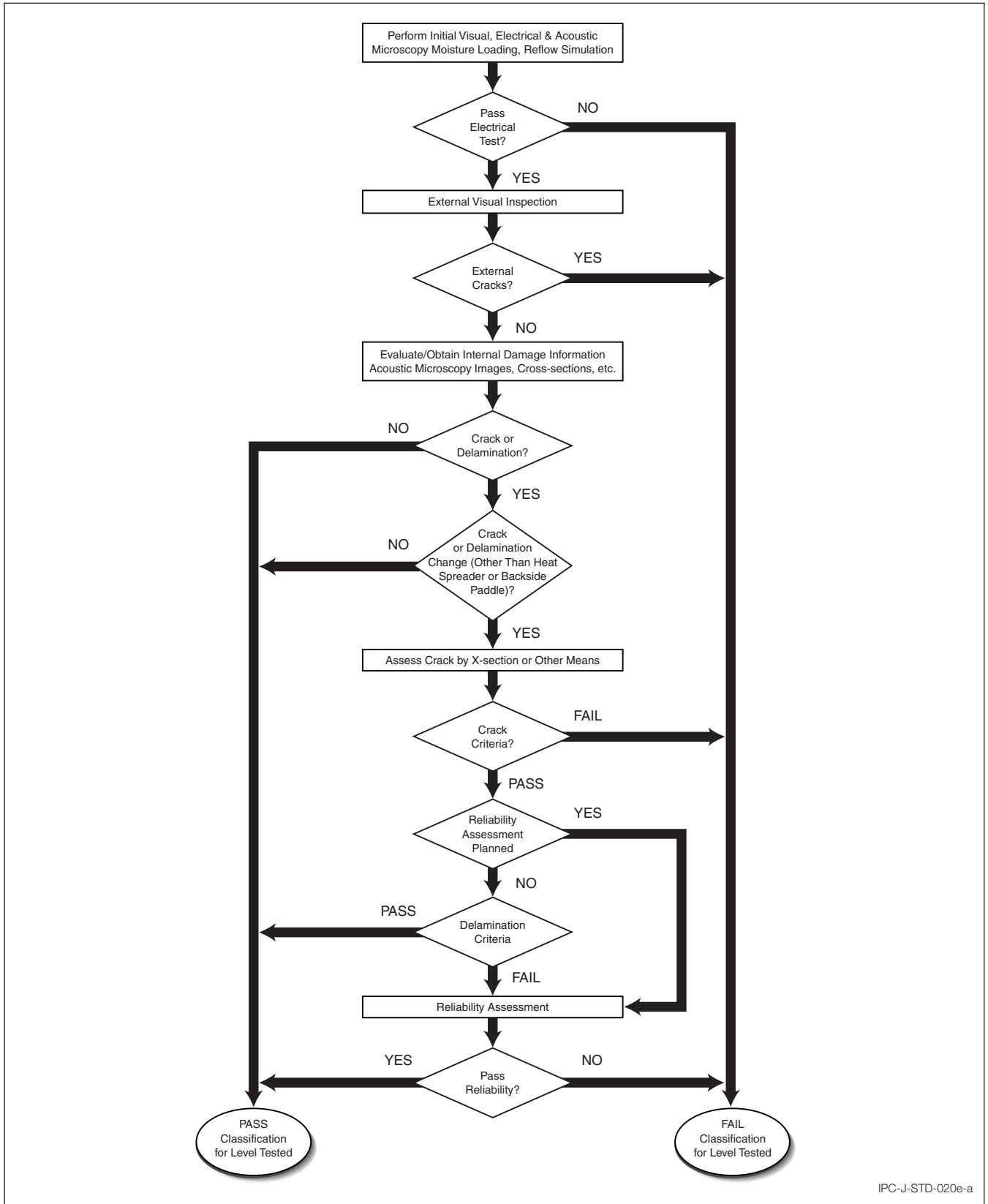
Continue until the devices have lost all their moisture as determined by the dry weight in 8.2.2.

9 ADDITIONS AND EXCEPTIONS

The following details **shall** be specified in the applicable documentation:

- a. Device selection criteria (if different from 5.1).
- b. Test procedure sample size (if different from 5.1).
- c. Package types to be evaluated.
- d. Any reject criteria (including Acoustic Microscope criterion) in addition to those shown in Clause 6.
- e. Any preconditioning requirements beyond those shown in Clause 5.
- f. Conditions or frequency under which retest is required.

ANNEX A



ANNEX B

Table B-1 Major Changes from Revision D to Revision E

Clause	Description of change
1	Alignment to JESD22-A113 on preconditioning.
1	Update to J-STD-075 referencing for some devices.
1.3.x	Numbering for terms and definitions added.
1.3.10	Clarification for Shelf life consideration per JEP160 added.
4.1	Changed Notes #1, 2 and 3 under Section 4 into "4.1 Classification Temperatures (Tc)" and added "If a different Tc is used, then the temperature used shall be written on the caution label as defined in J-STD-033." to what was previously Note 3.
4.1	Tables 4.1 and 4.2 Note 1 – Added clarification to package volume to include any cavity or if it is a passive package.
5.4 Note 2	Clarification for bake time computation if test is interrupted added.
5.5	Clarification notes 4 and 5 added.
5.8	Clarification note added.
6.1	Added clarification that Failure Criteria is after Solder Reflow. Added option of 100x optical or low vacuum SEM to observe external cracks. Previous Notes 1 and 4 have been added to 6.1 and clarified.
6.2.1.1 d	Clarification of thermally enhanced and electrically conductive die attach.
6.2.4	Potential exclusion for bare die with polymer devices on J-STD-020 applicability.
6.2.5	Potential exclusion for Non-IC packages on J-STD-020 applicability.
7	Consideration for long term storage requirements (JEP160).
8.2.2	Dry weight determination with time interval characterization.
8.2.2 Note	Clarification for bake time computation if test is interrupted added.



Standard Improvement Form

JEDEC >!GH8!\$&\$9

The purpose of this form is to provide the Technical Committees of JEDEC with input from the industry regarding usage of the subject standard. Individuals or companies are invited to submit comments to JEDEC. All comments will be collected and dispersed to the appropriate committee(s).

If you can provide input, please complete this form and return to:

JEDEC
Attn: Publications Department
3103 North 10th Street
Suite 240 South
Arlington, VA 22201-2107

Fax: 703.907.7583

1. I recommend changes to the following:

Requirement, clause number _____

Test method number _____ Clause number _____

The referenced clause number has proven to be:

Unclear Too Rigid In Error

Other _____

2. Recommendations for correction:

3. Other suggestions for document improvement:

Submitted by

Name: _____

Phone: _____

Company: _____

E-mail: _____

Address: _____

City/State/Zip: _____

Date: _____

Association Connecting Electronic Industries



JEDEC Solid State Technology Association
3103 North 10th Street Suite 240S
Arlington VA 22201
www.jedec.org



3000 Lakeside Drive, Suite 309 S
Bannockburn, IL 60015
847-615-7100 **tel**
847-615-7105 **fax**
www.ipc.org
ISBN #978-1-61193-159-4