

6

5

4

3

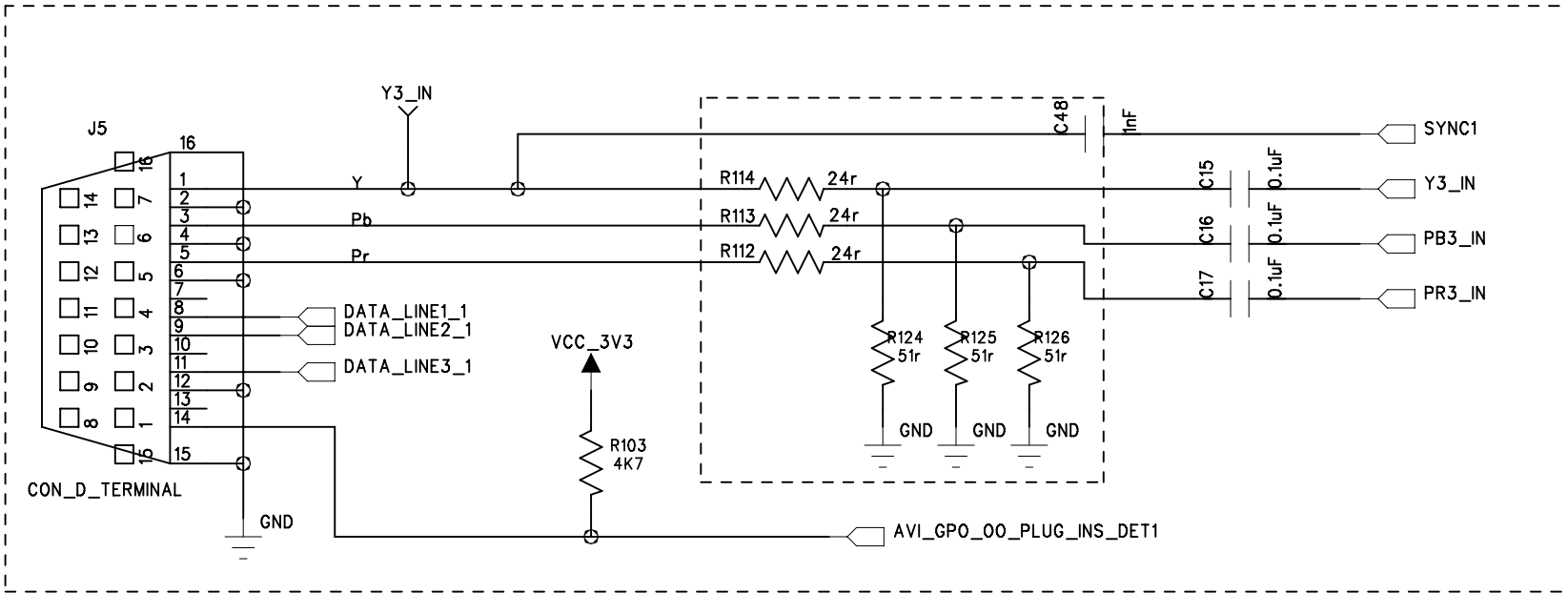
2

1

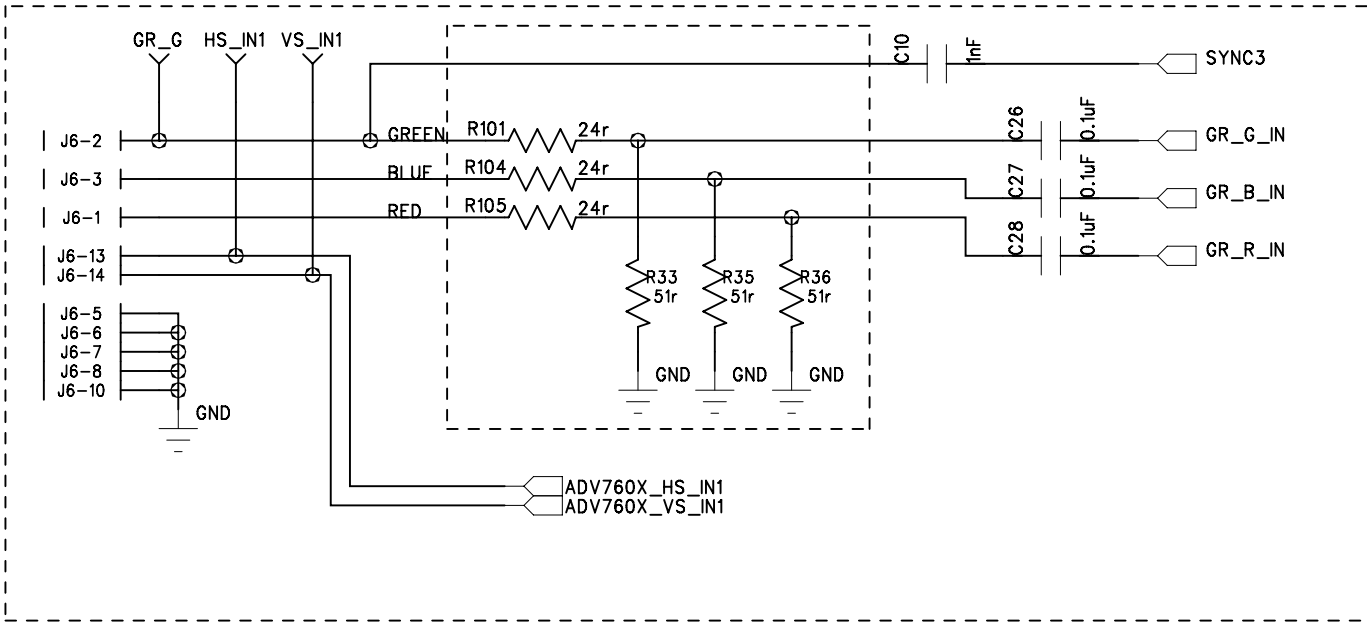
REVISION RECORD			
LTR	ECO NO:	APPROVED:	DATE:

Place analog inputs as far apart as possible while maintaining similar trace lengths
 Trace impedance of analog inputs to be 75 ohms
 Termination resistors should be placed as close as possible to end of line

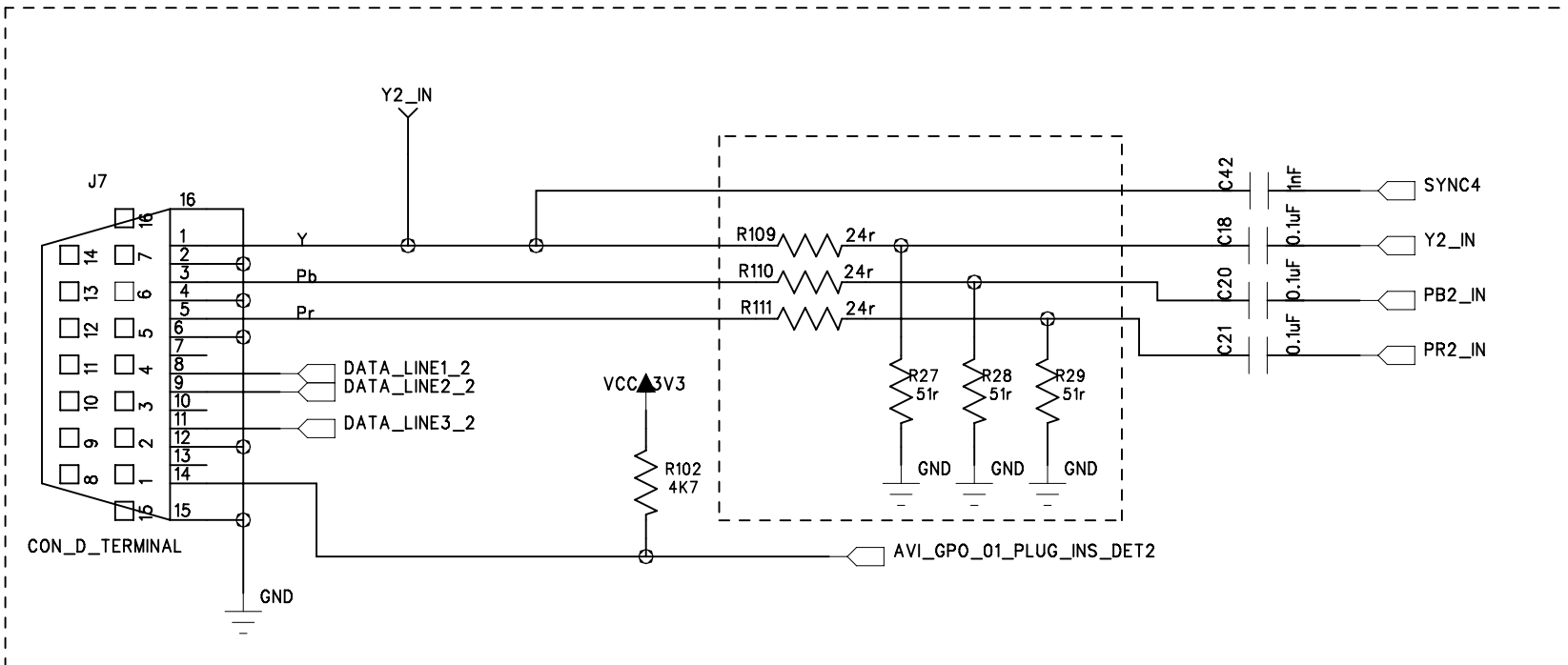
D-Type Connector



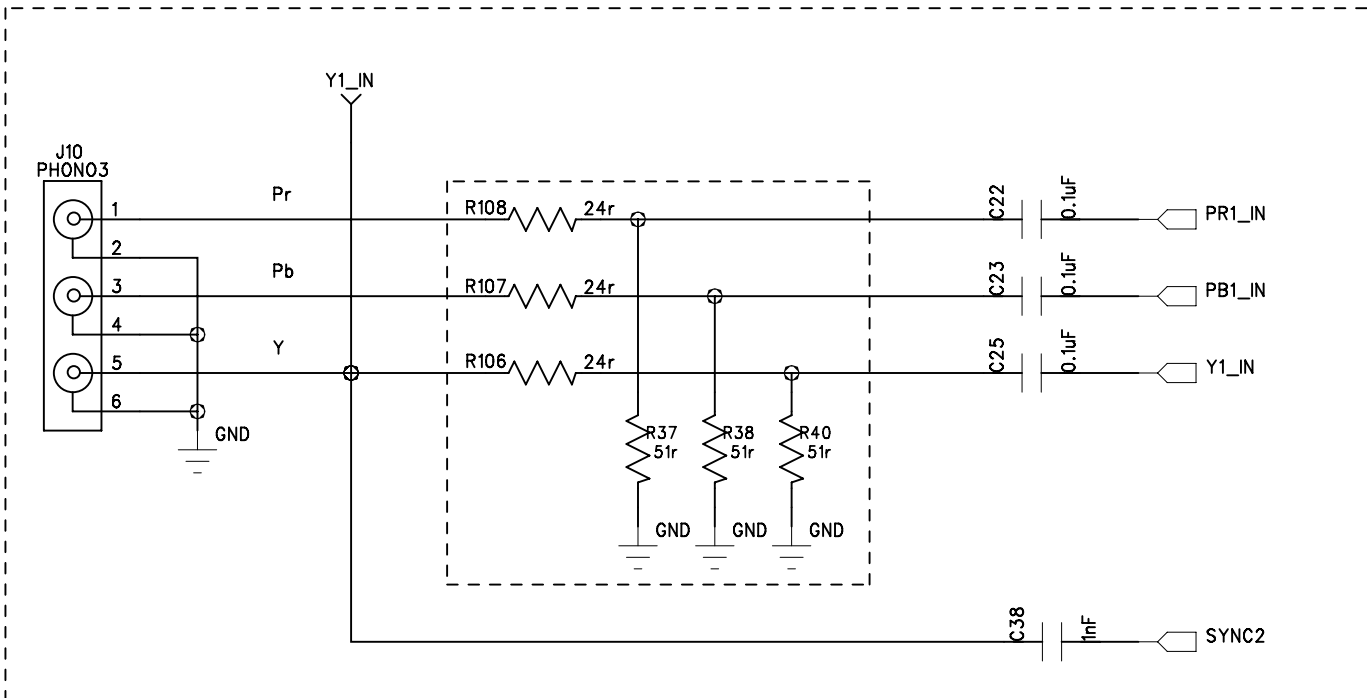
VGA Connector



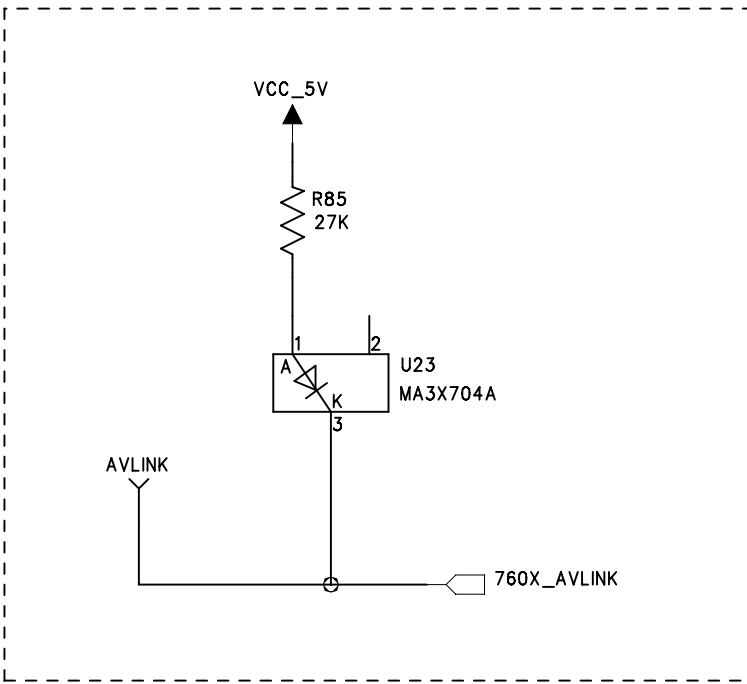
D-Type Connector



Component Connector



AVLink To 168-Pin Connector



COMPANY: Analog Devices			
TITLE: ATV Group ADV7604 Eval Board: Video Connector Sheet			
DRAWN: Joe Triggs	DATED: 22/07/08	CODE:	SIZE:
CHECKED:	DATED:	DRAWING NO:	
QUALITY CONTROL:	DATED:	REV: A	
RELEASED:	DATED:	SCALE:	SHEET: 1 OF 9

6

5

4

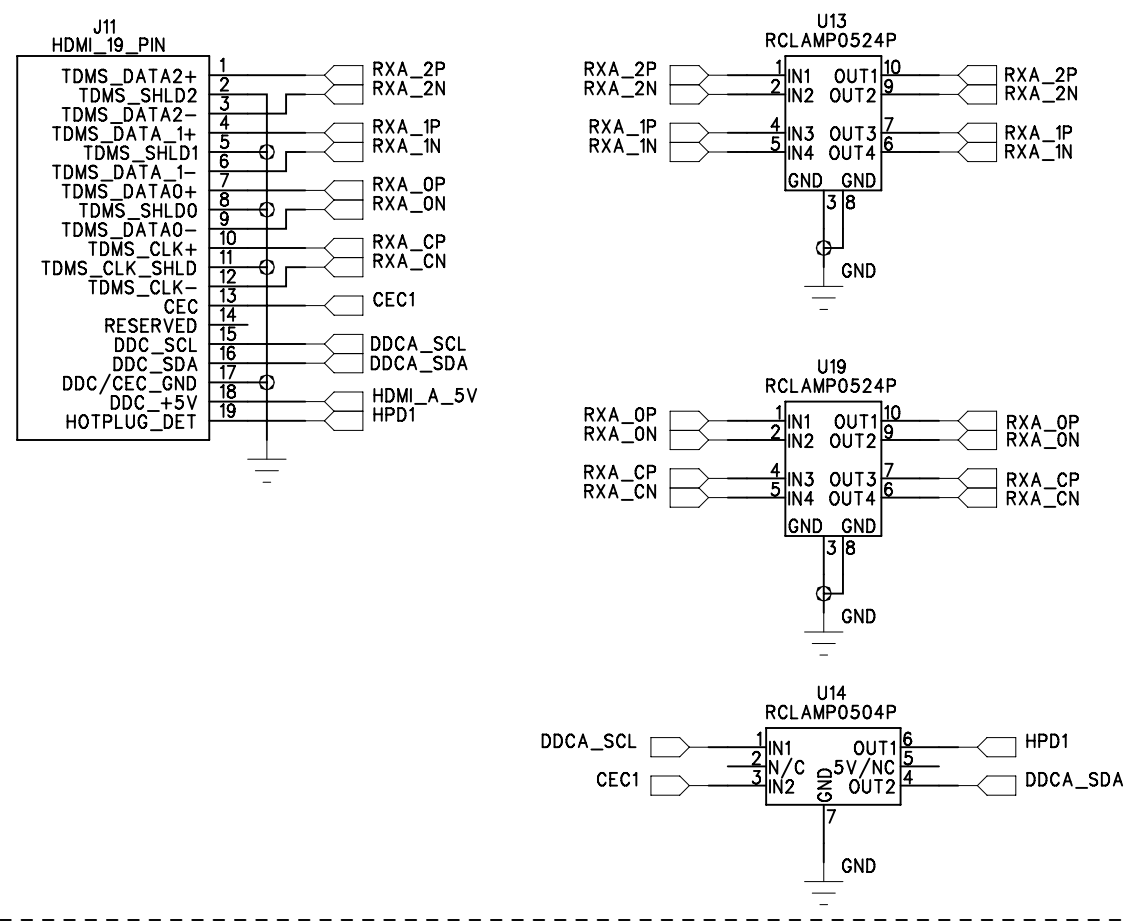
3

2

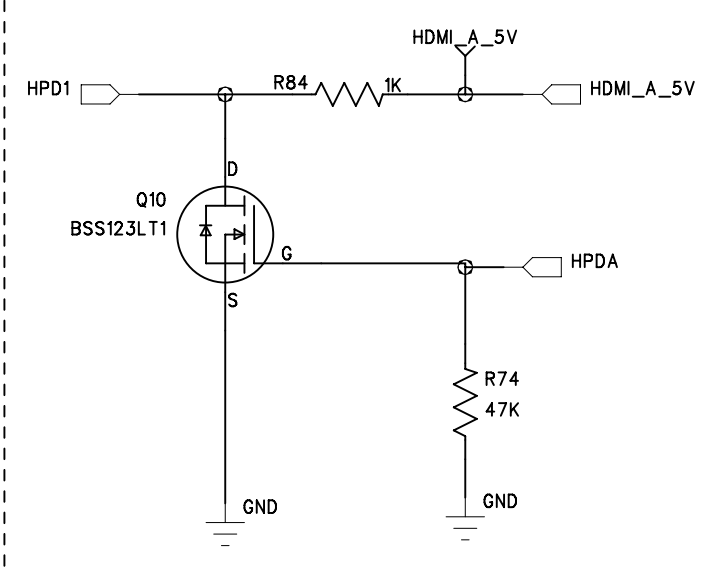
1

REVISION RECORD			
LTR	ECO NO:	APPROVED:	DATE:

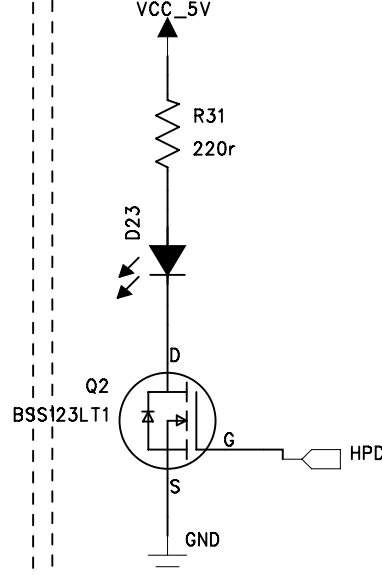
HDMI Port A – Connector and ESD Suppression



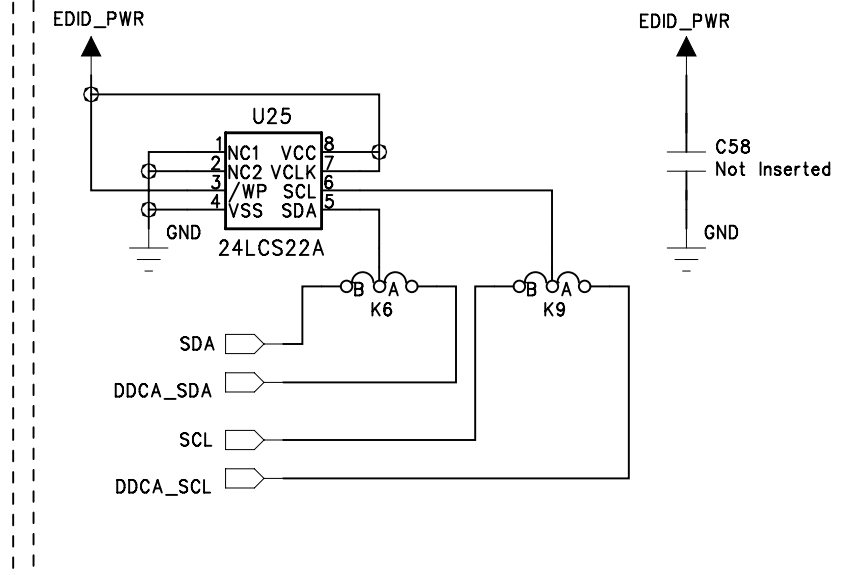
HPD A Control



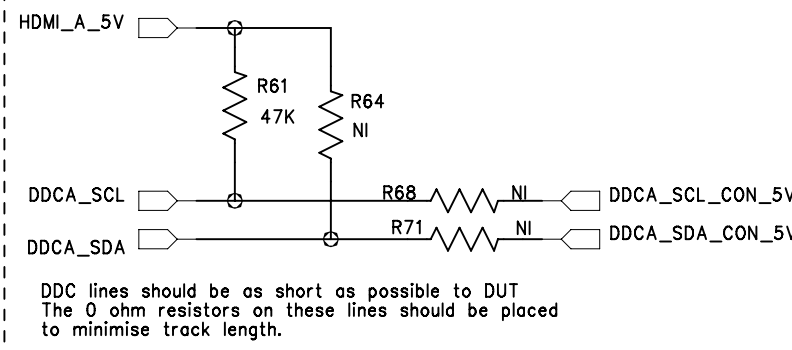
HPD A LED



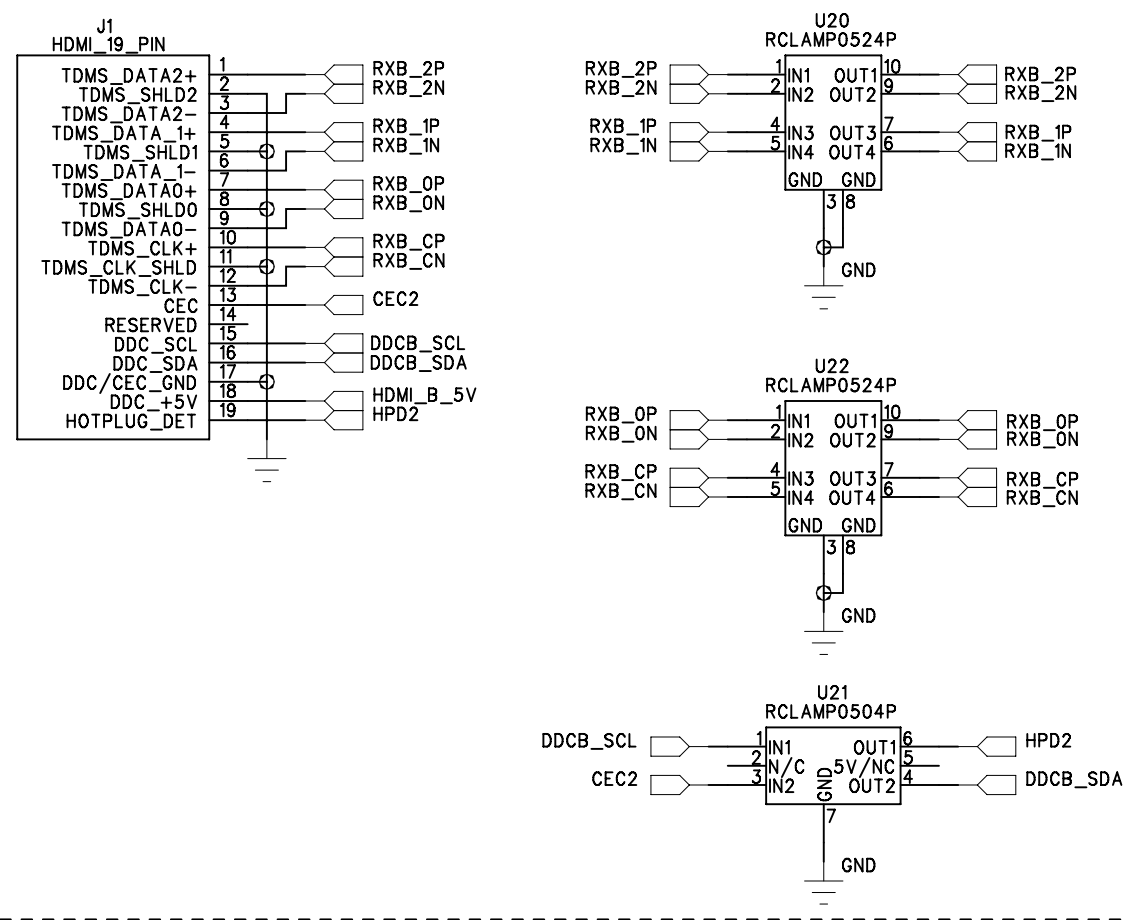
EDID1



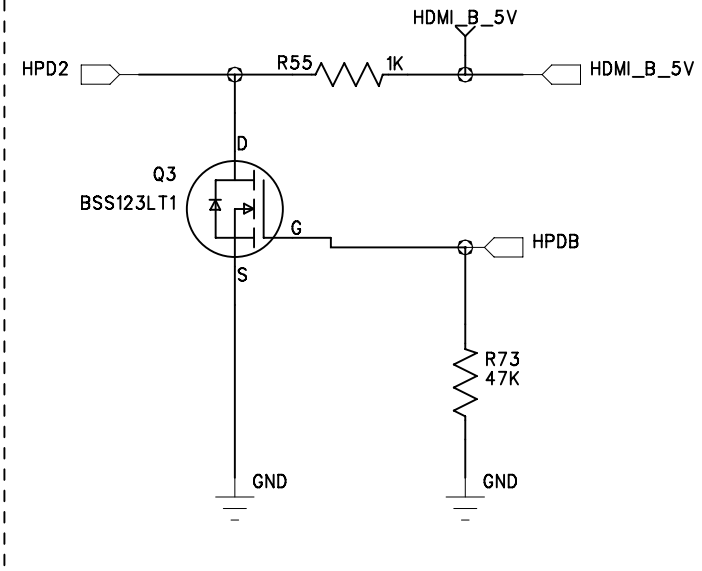
DDC A Circuitry



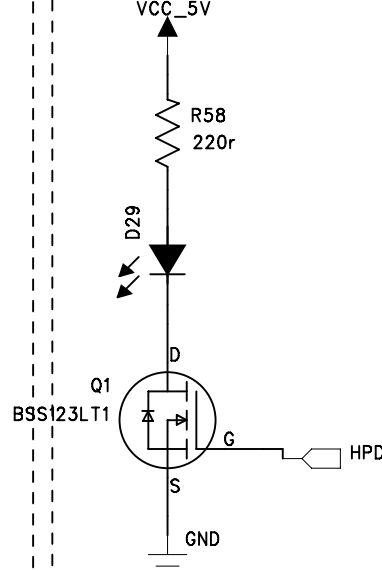
HDMI Port B – Connector and ESD Suppression



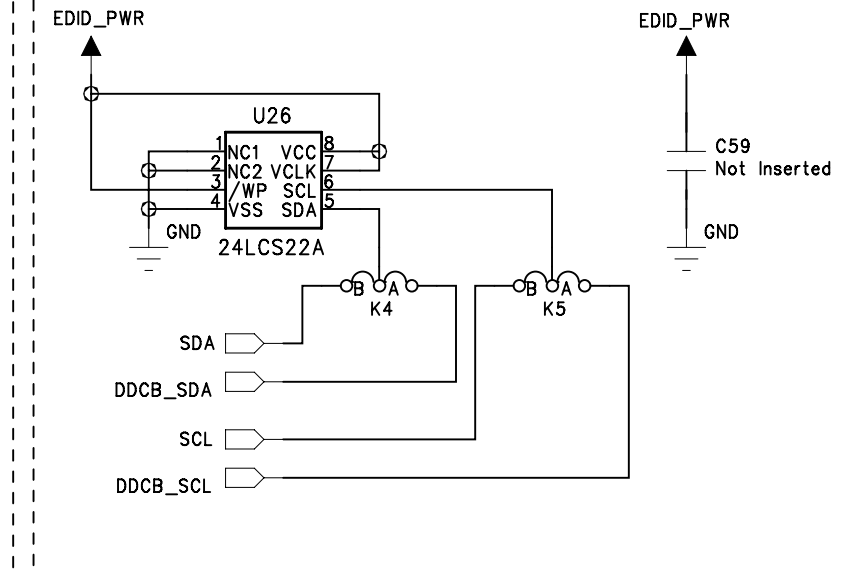
HPD B Control



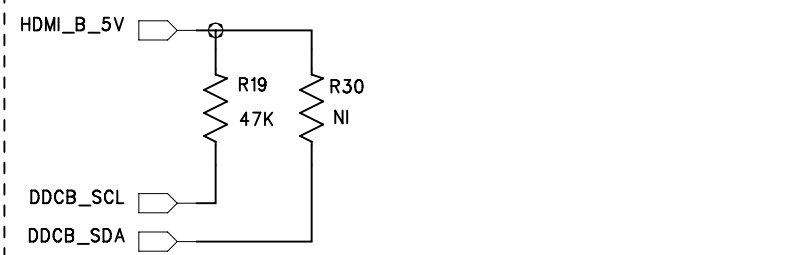
HPD B LED



EDID2



DDC B Circuitry



COMPANY: Analog Devices			
TITLE: ATV Group			
ADV7604 Eval Board: HDMI Connector Sheet 1			
DRAWN: Joe Triggs	DATED: 22/07/08	CODE:	REV: A
CHECKED:	DATED:	SIZE:	DRAWING NO:
QUALITY CONTROL:	DATED:	SCALE:	
RELEASED:	DATED:	SHEET: 2 OF 9	

6

5

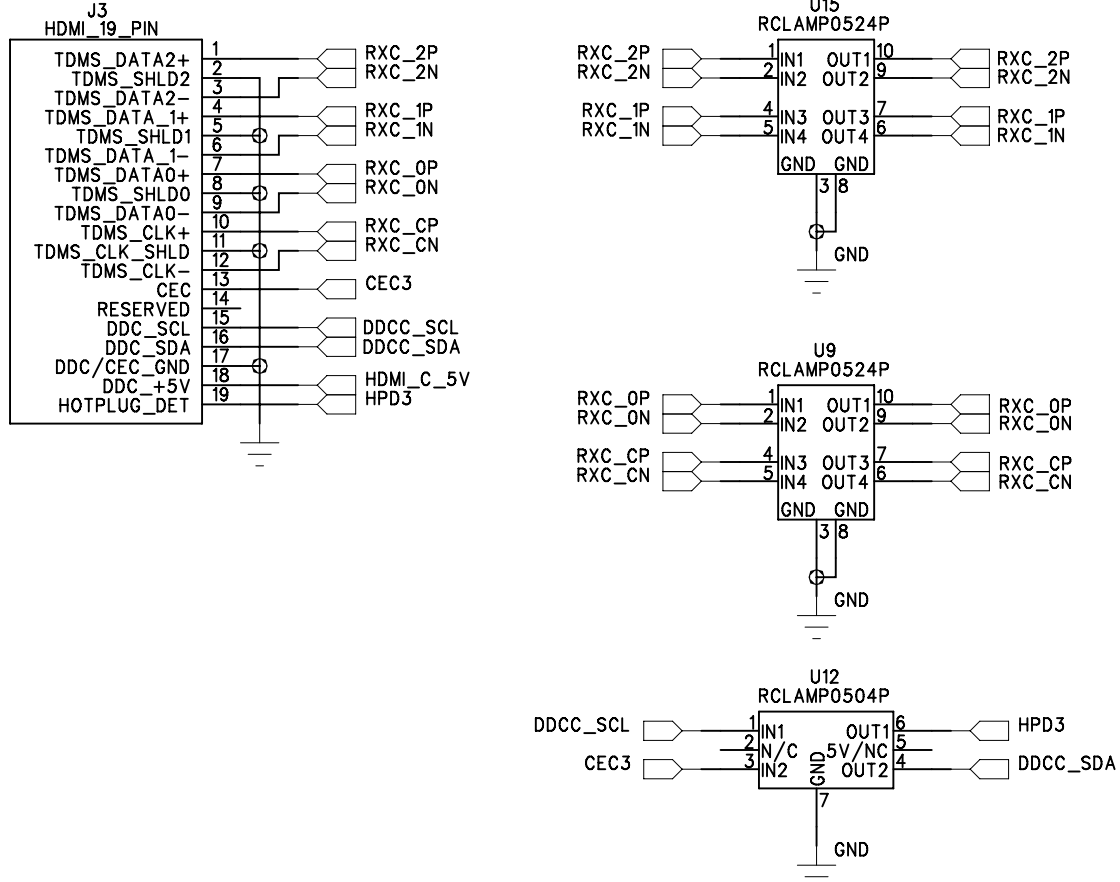
4

3

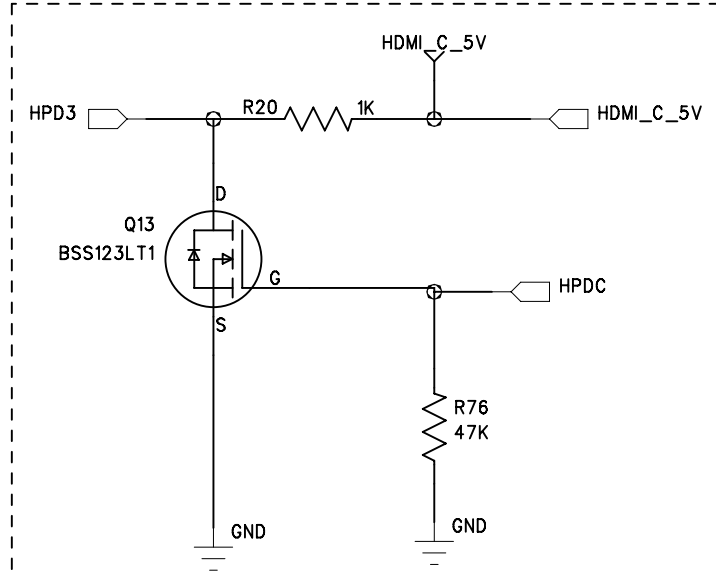
2

1

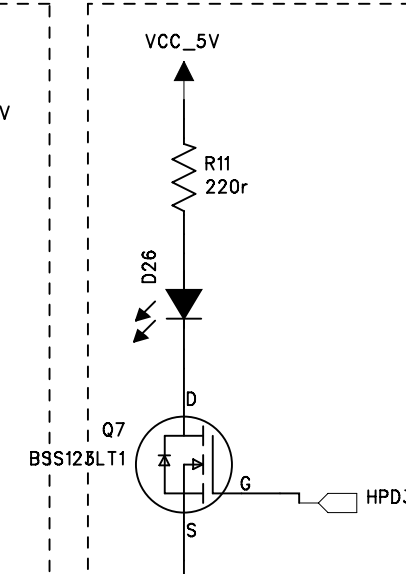
HDMI Port C - Connector and ESD Suppression



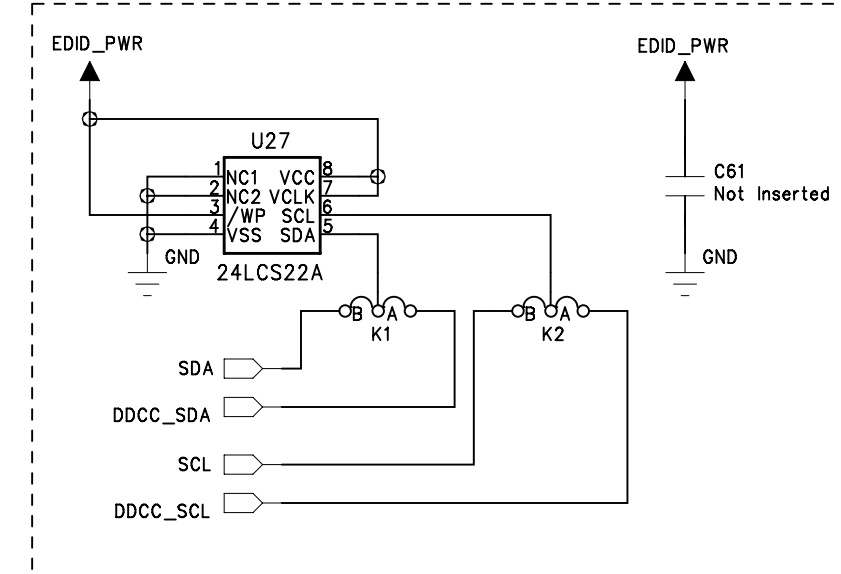
HPD C Control



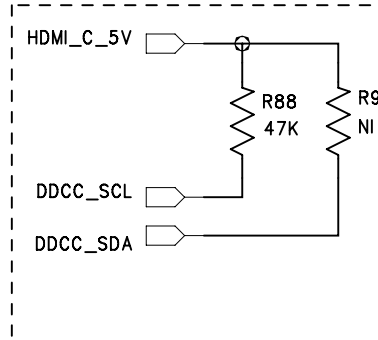
HPD C LED



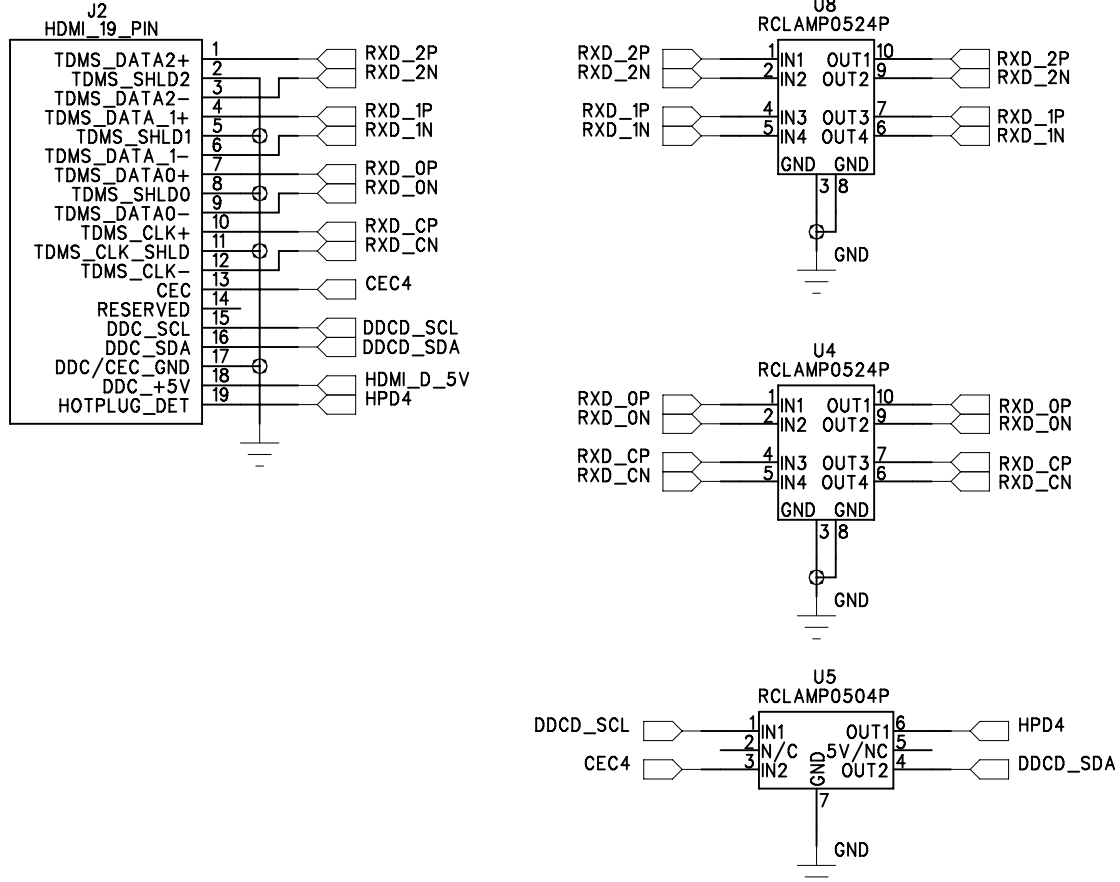
EDID3



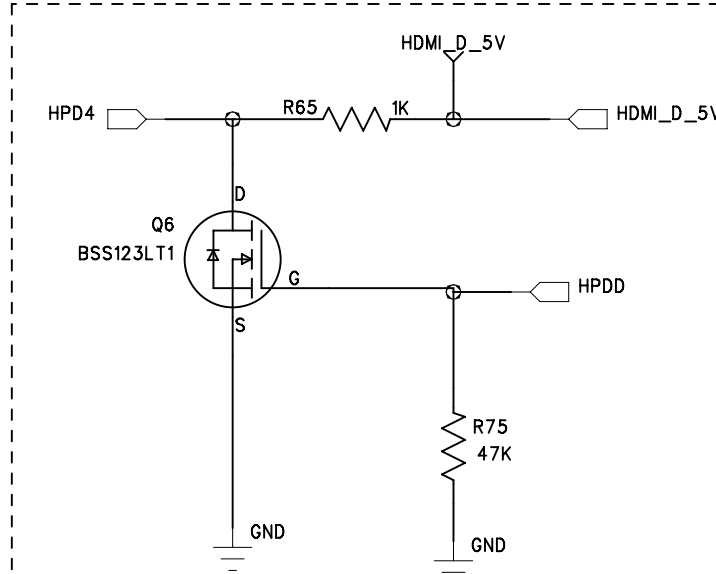
DDC C Circuitry



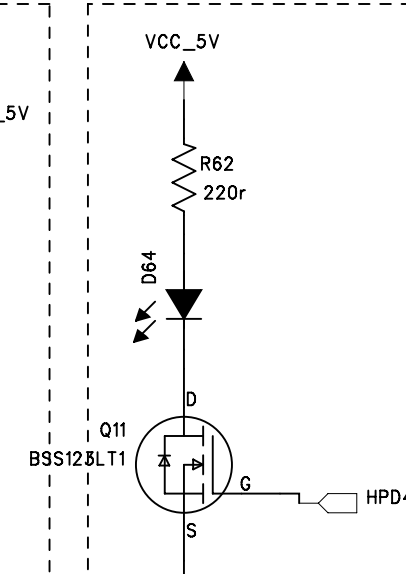
HDMI Port D - Connector and ESD Suppression



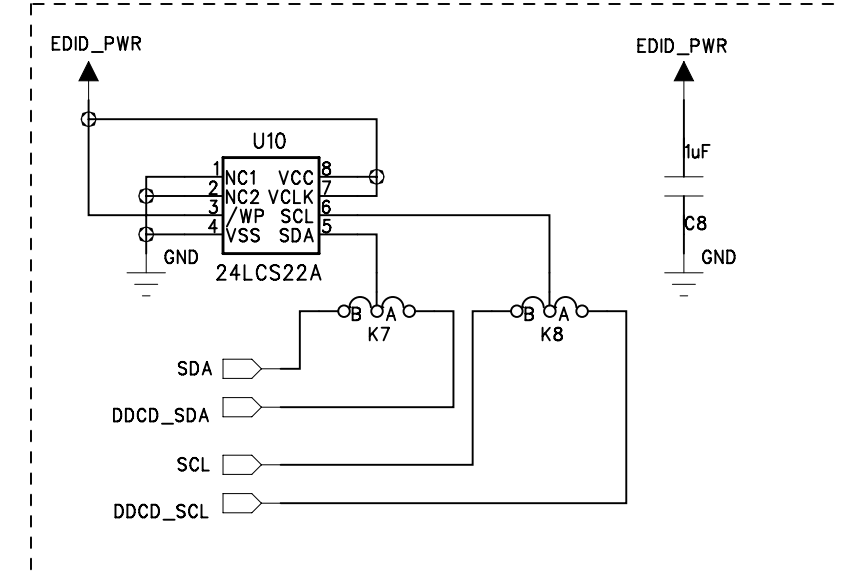
HPD D Control



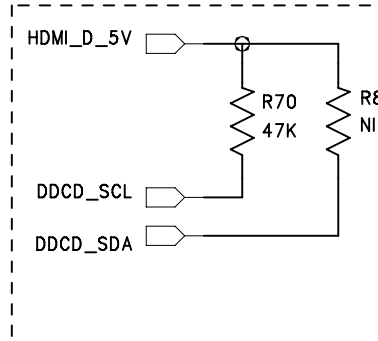
HPD D LED



EDID4



DDC D Circuitry



REVISION RECORD			
LTR	ECO NO:	APPROVED:	DATE:

COMPANY: Analog Devices			
TITLE: ATV Group			
ADV7604 Eval Board: HDMI Connector Sheet 2			
DRAWN: Joe Triggs	DATED: 22/07/08	CODE:	REV: A
CHECKED:	DATED:	SIZE:	DRAWING NO:
QUALITY CONTROL:	DATED:		
RELEASED:	DATED:		
SCALE:			SHEET: 3 of 9

6

5

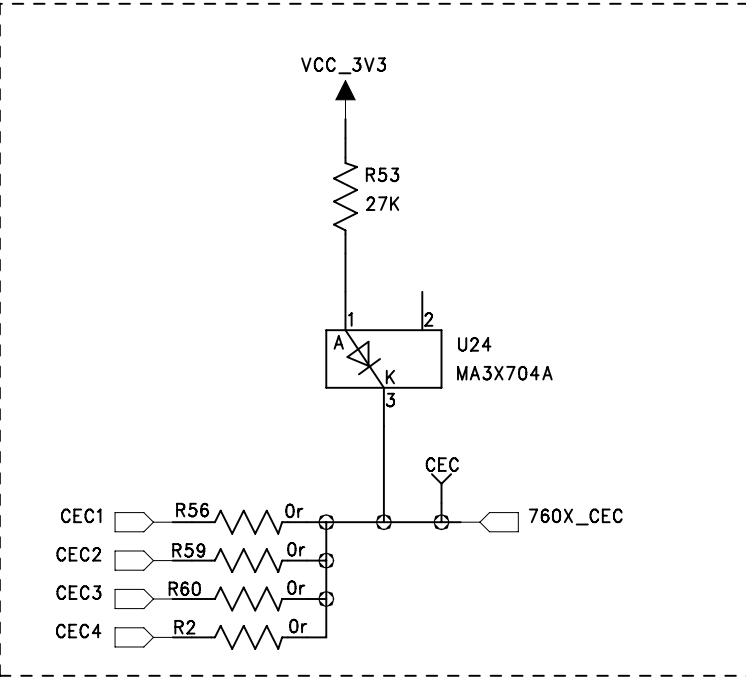
4

3

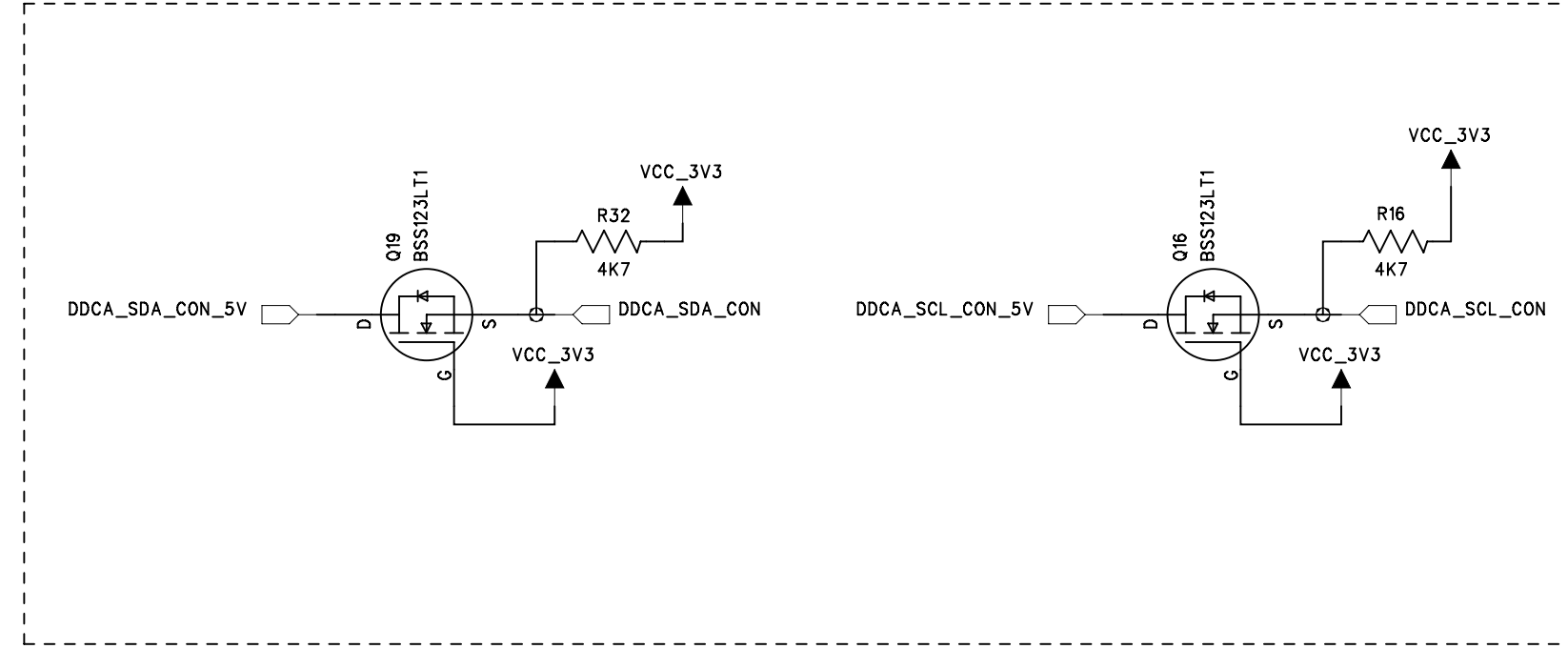
2

1

CEC To 168-Pin Connector



DDC To 168-Pin Connector Level Translation



REVISION RECORD			
LTR	ECO NO:	APPROVED:	DATE:

D

D

C

C

B

B

A

A

COMPANY: Analog Devices

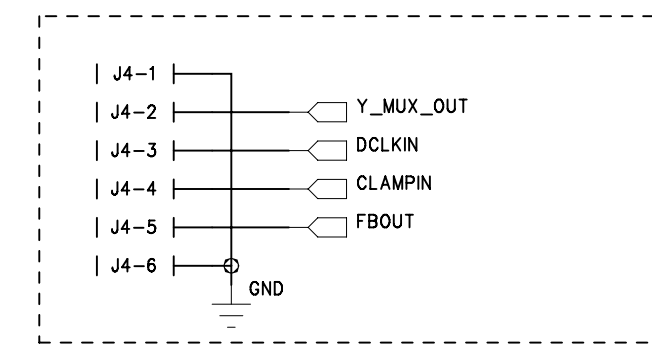
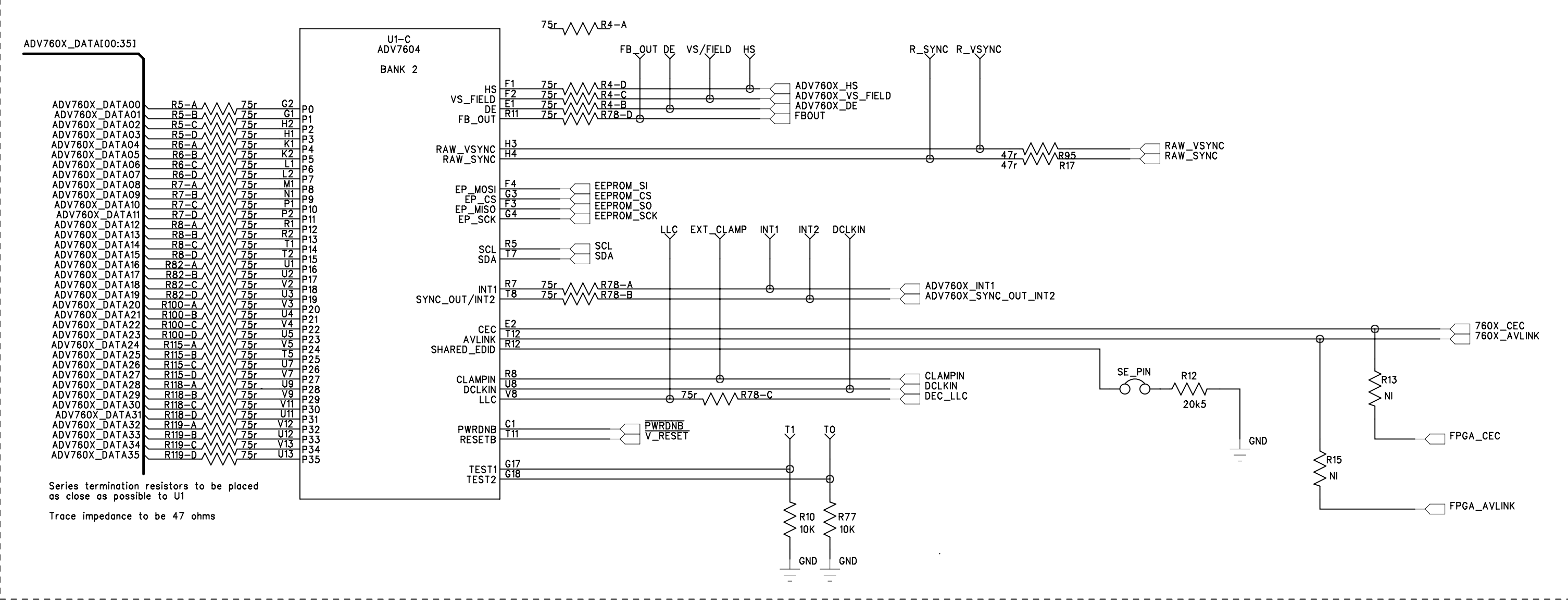
TITLE: ATV Group
ADV7604 Eval Board:
Misc HDMI

DRAWN: Joe Triggs	DATED: 22/07/08
CHECKED:	DATED:
QUALITY CONTROL:	DATED:
RELEASED:	DATED:

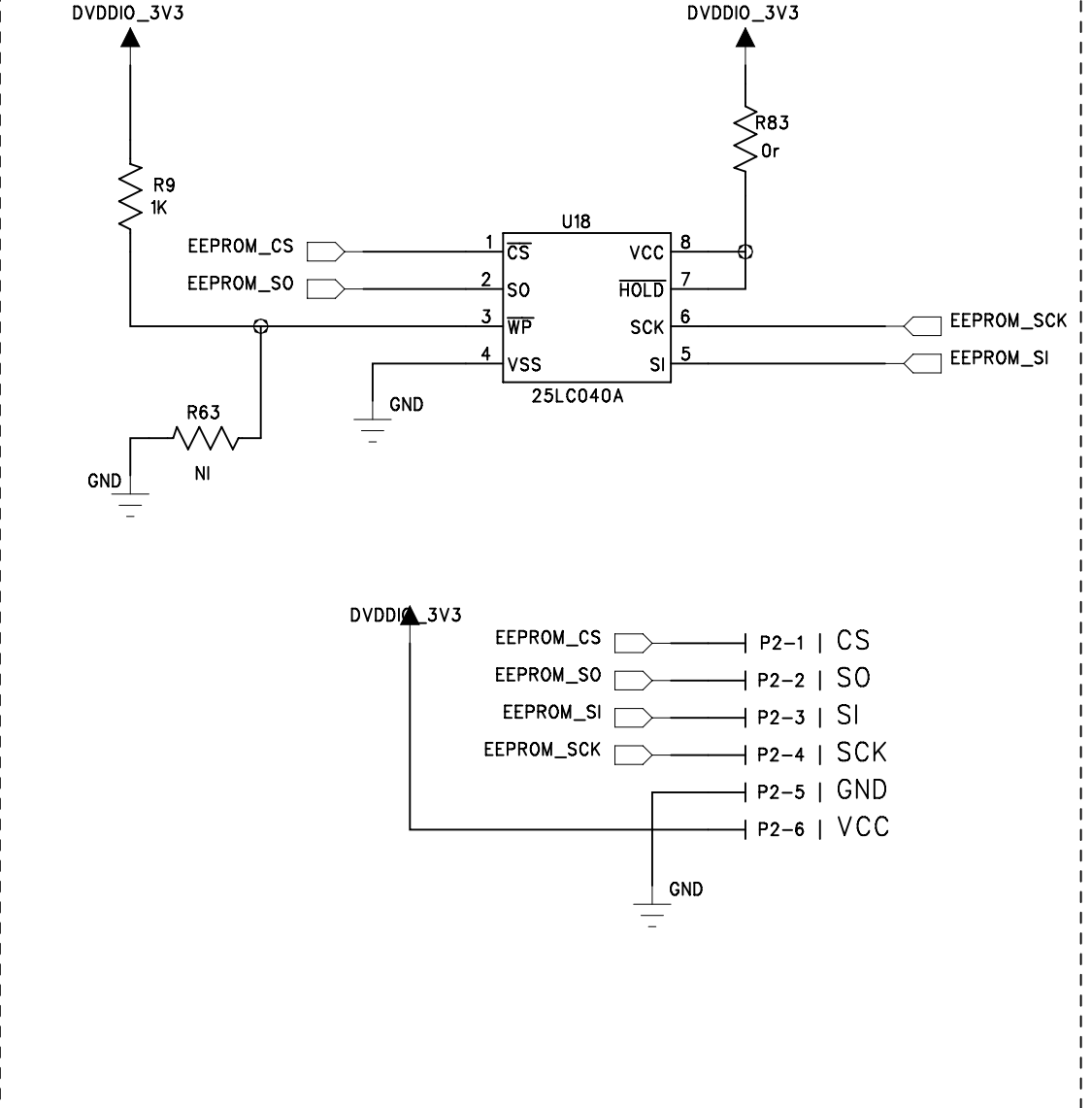
CODE:	SIZE:	DRAWING NO:	REV: A
SCALE:			SHEET: 4 OF 9

REVISION RECORD			
LTR	ECO NO:	APPROVED:	DATE:

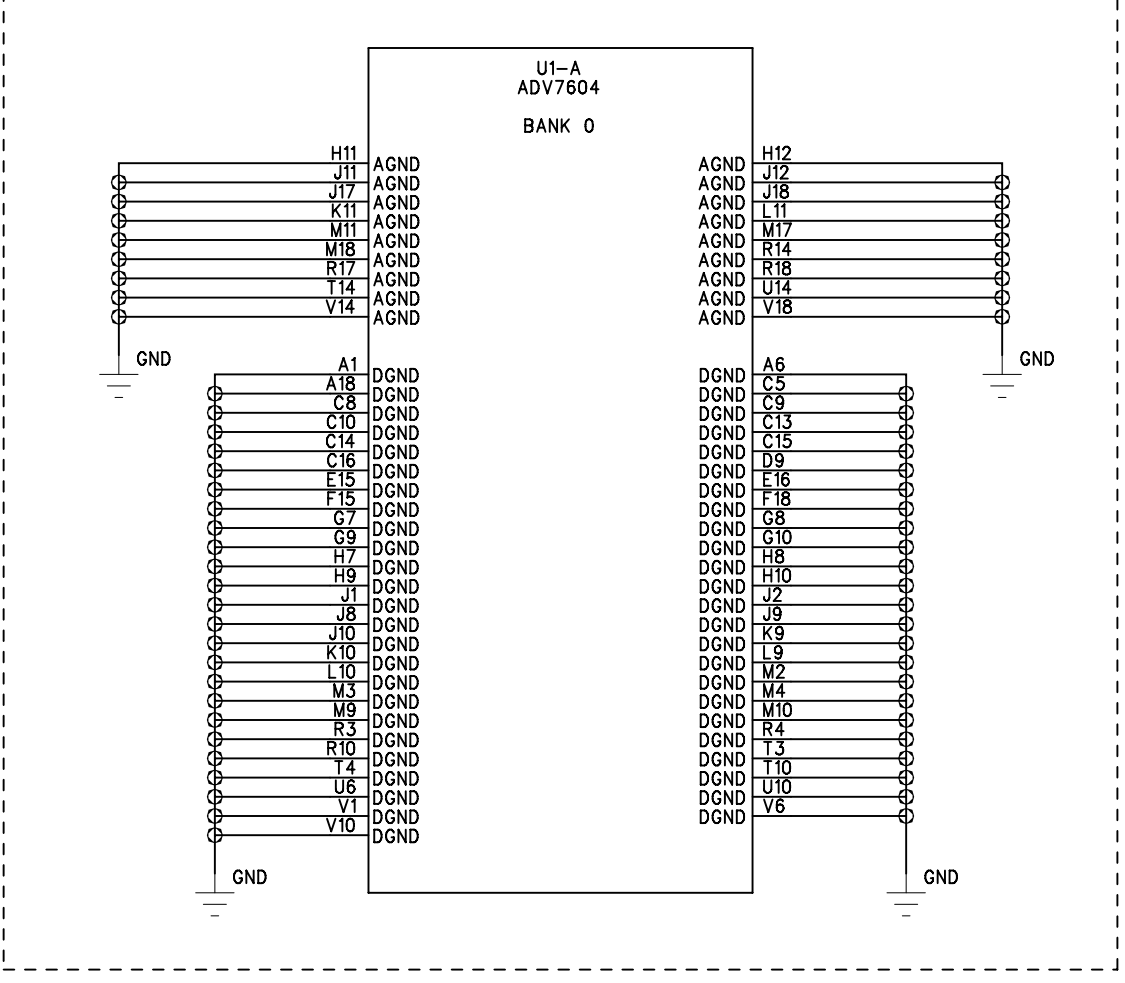
ADV7604 Digital I/O



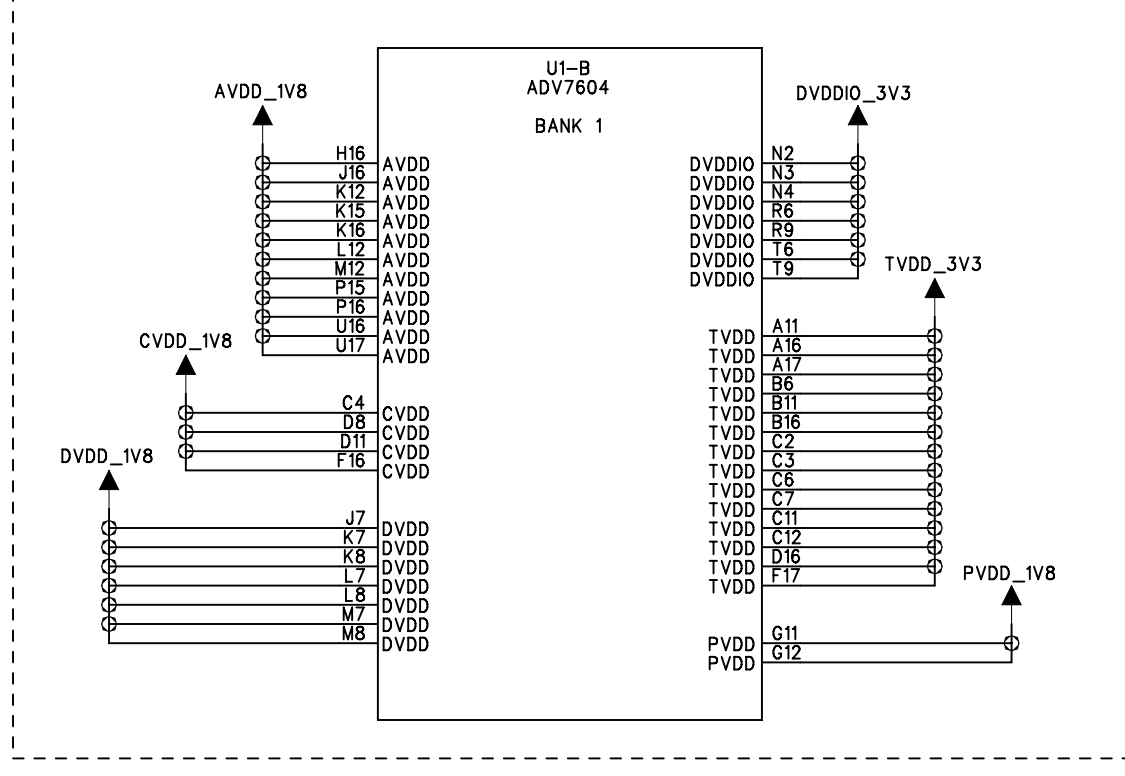
EDID EEPROM



ADV7604 Ground



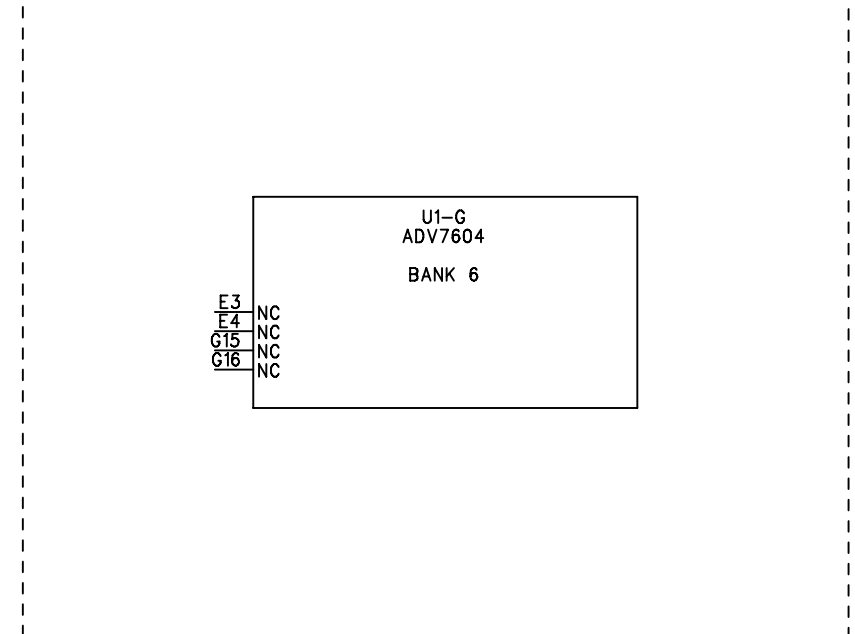
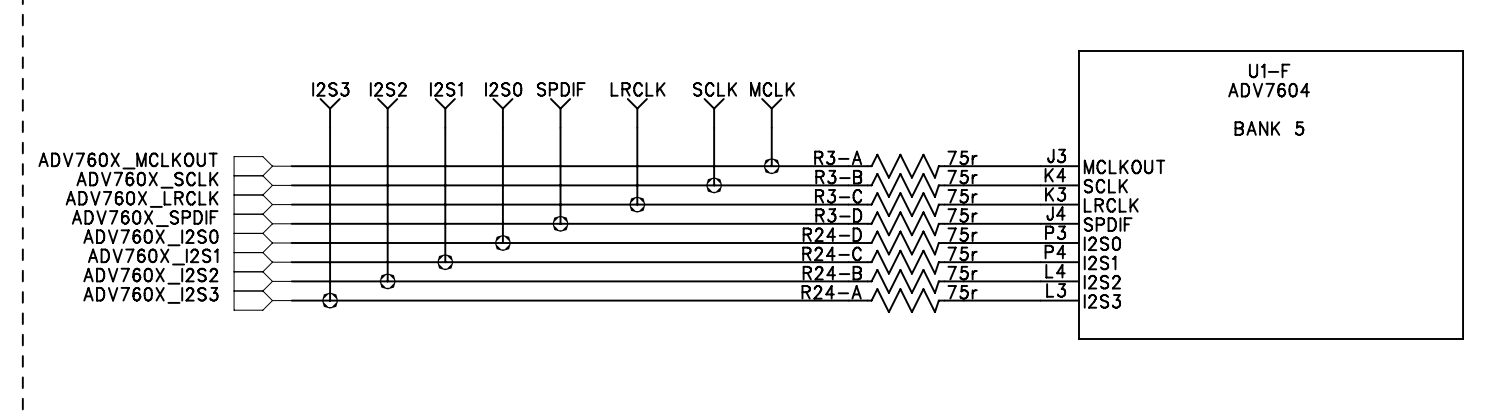
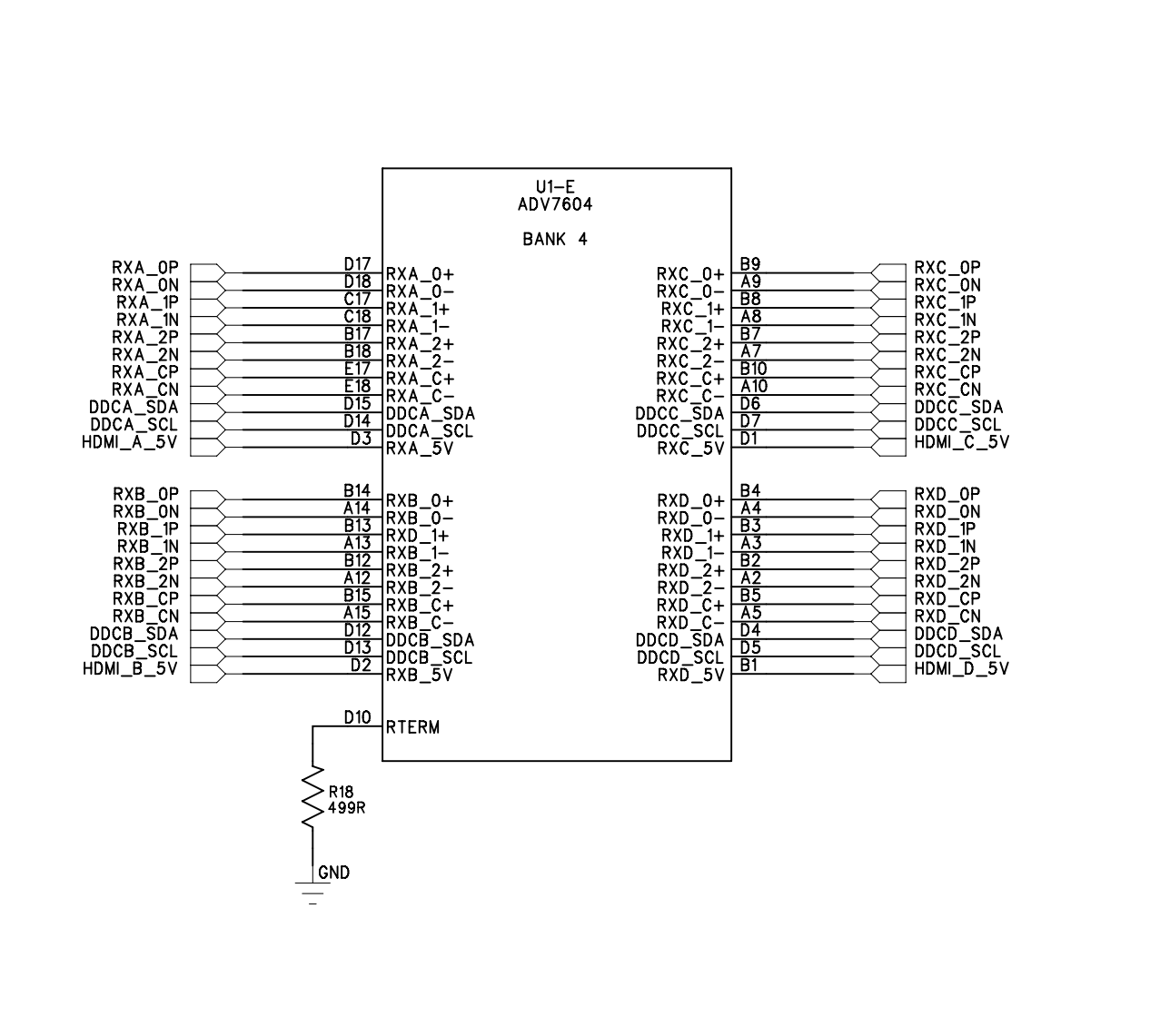
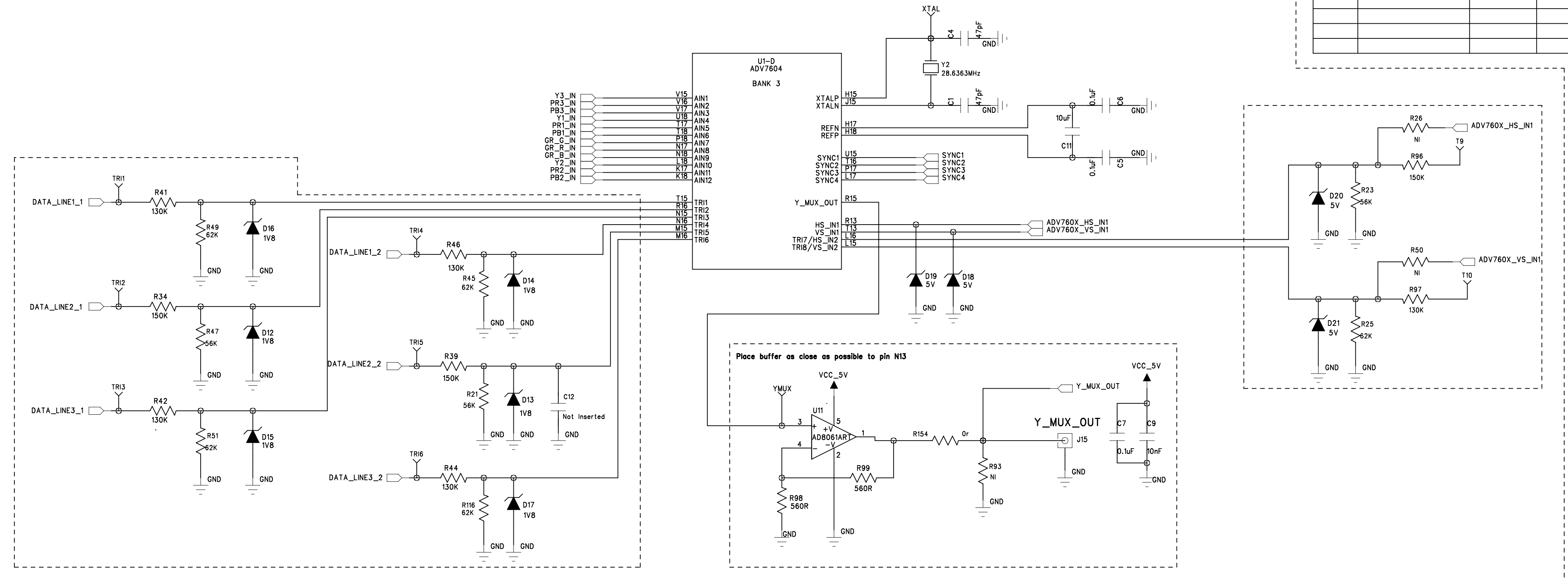
ADV7604 Power



COMPANY: Analog Devices			
TITLE: ATV Group			
ADV7604 Eval Board: ADV7604 Section 1			
DRAWN: Joe Triggs	DATED: 22/07/08	CODE:	SIZE:
CHECKED:	DATED:	DRAWING NO:	
QUALITY CONTROL:	DATED:	REV: A	
RELEASED:	DATED:	SCALE:	
SHEET: 5 of 9			

ADV7604 Analog I/O

REVISION RECORD			
LTR	ECO NO:	APPROVED:	DATE:



6

5

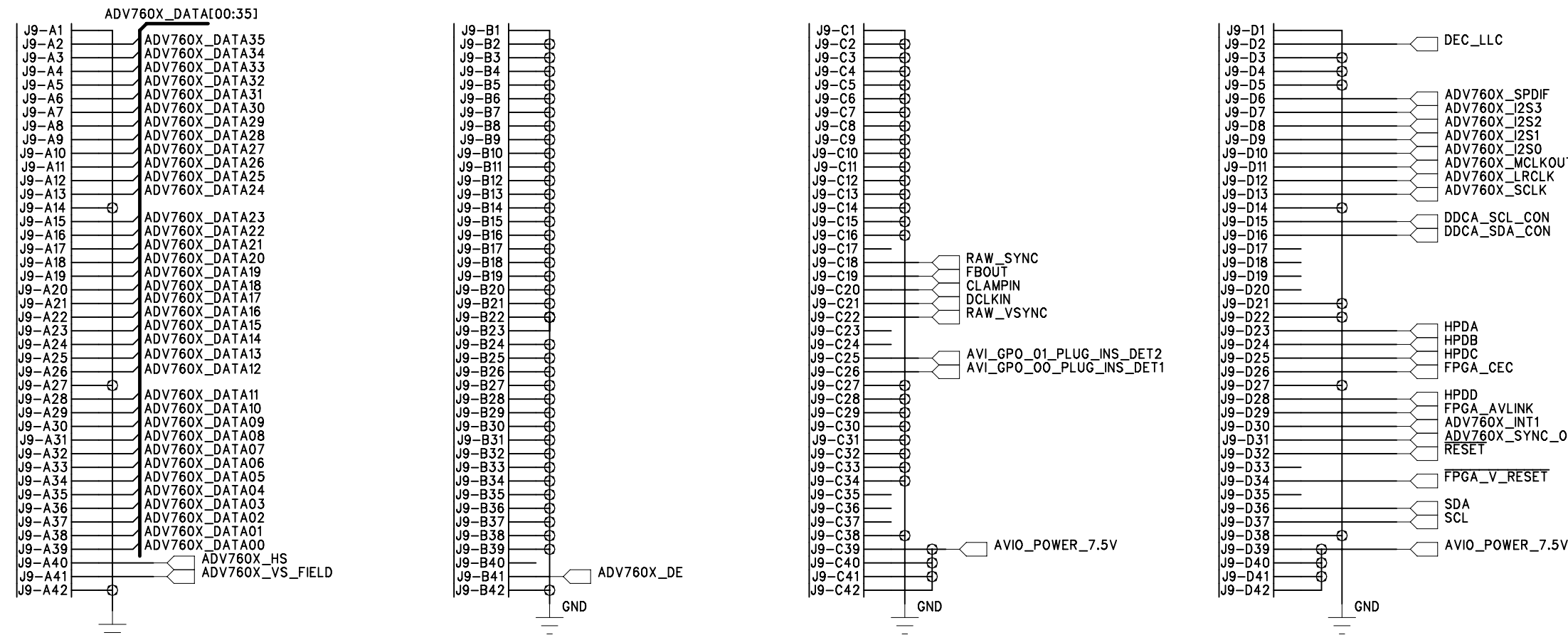
4

3

2

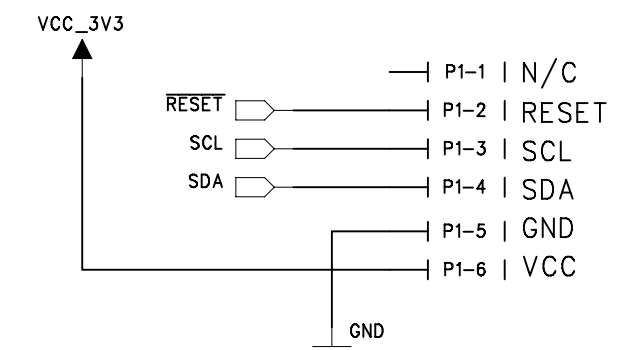
1

168-Pin Connector

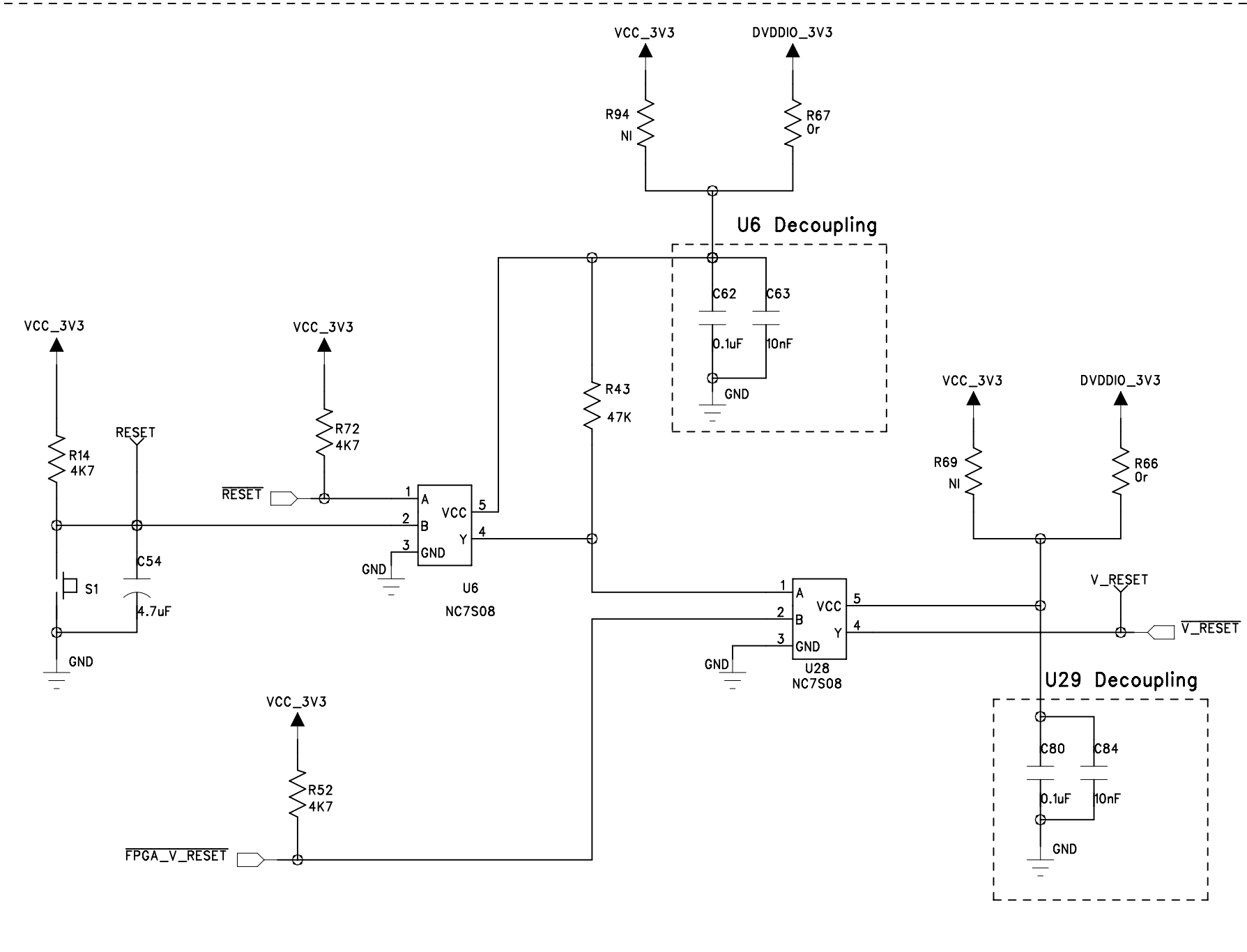


REVISION RECORD			
LTR	ECO NO:	APPROVED:	DATE:

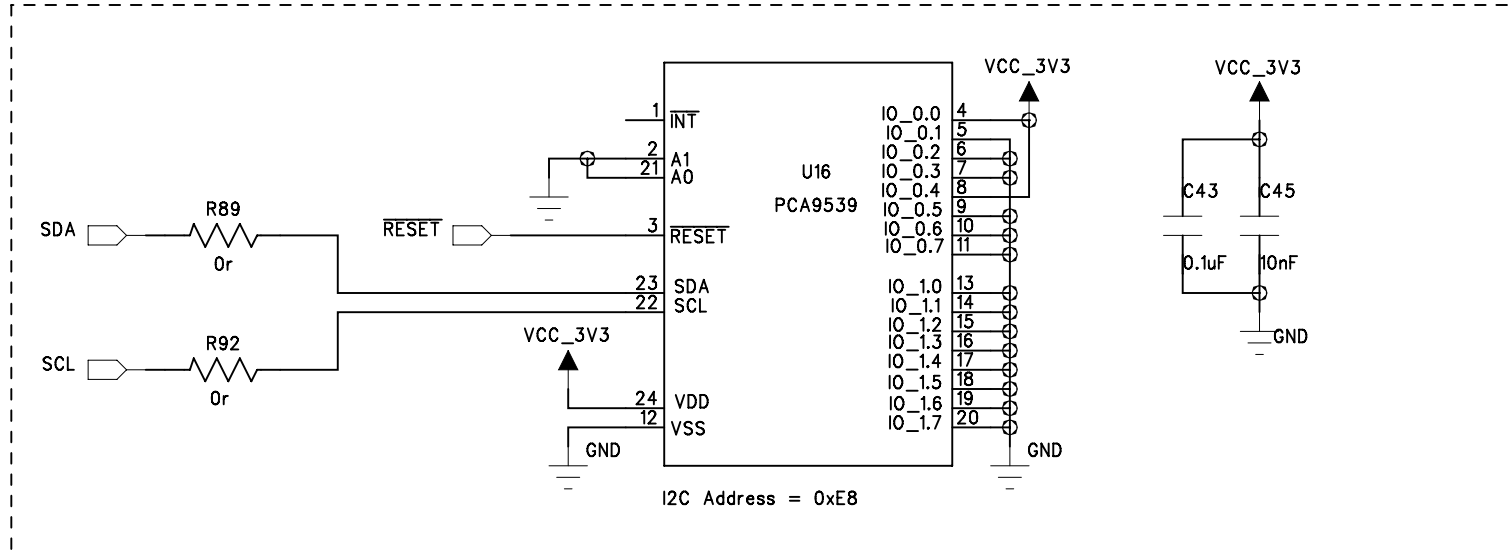
I2C Header



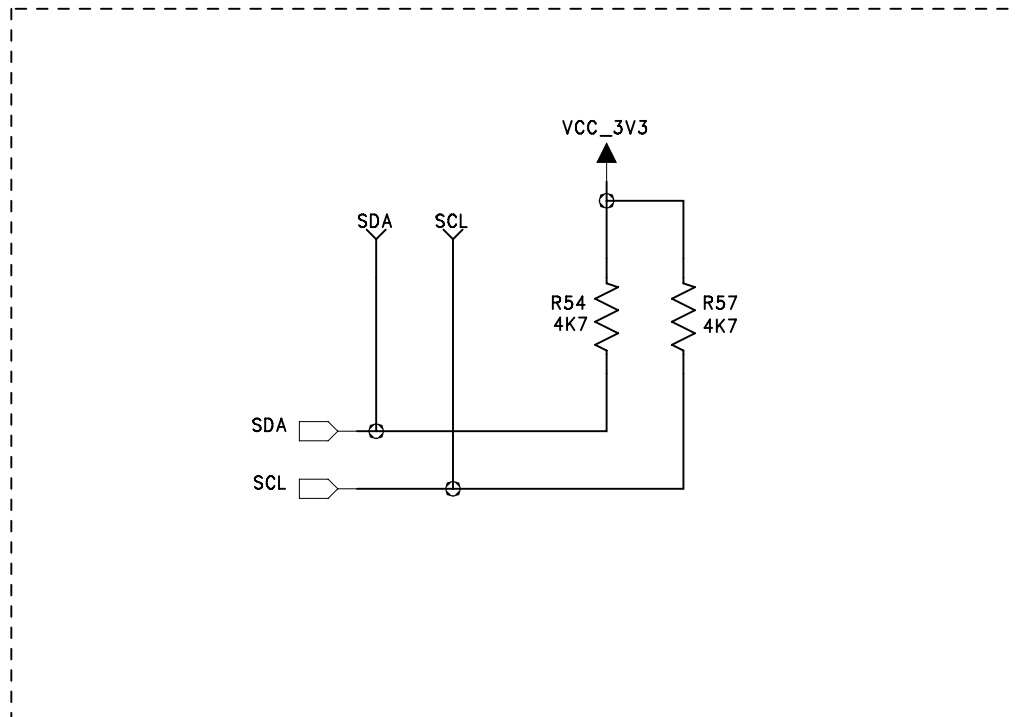
Reset Circuitry



Board Identification Bus Expander



I2C Splitter



COMPANY: Analog Devices

TITLE: ATV Group
ADV7604 Eval Board:
FPGA Connector Sheet

DRAWN: Joe Triggs	DATED: 22/07/08
CHECKED:	DATED:
QUALITY CONTROL:	DATED:
RELEASED:	DATED:

CODE:	SIZE:	DRAWING NO:	REV: A
SCALE:			SHEET: 7 of 9

6

5

4

3

2

1

REVISION RECORD			
LTR	ECO NO:	APPROVED:	DATE:

D

D

C

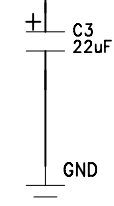
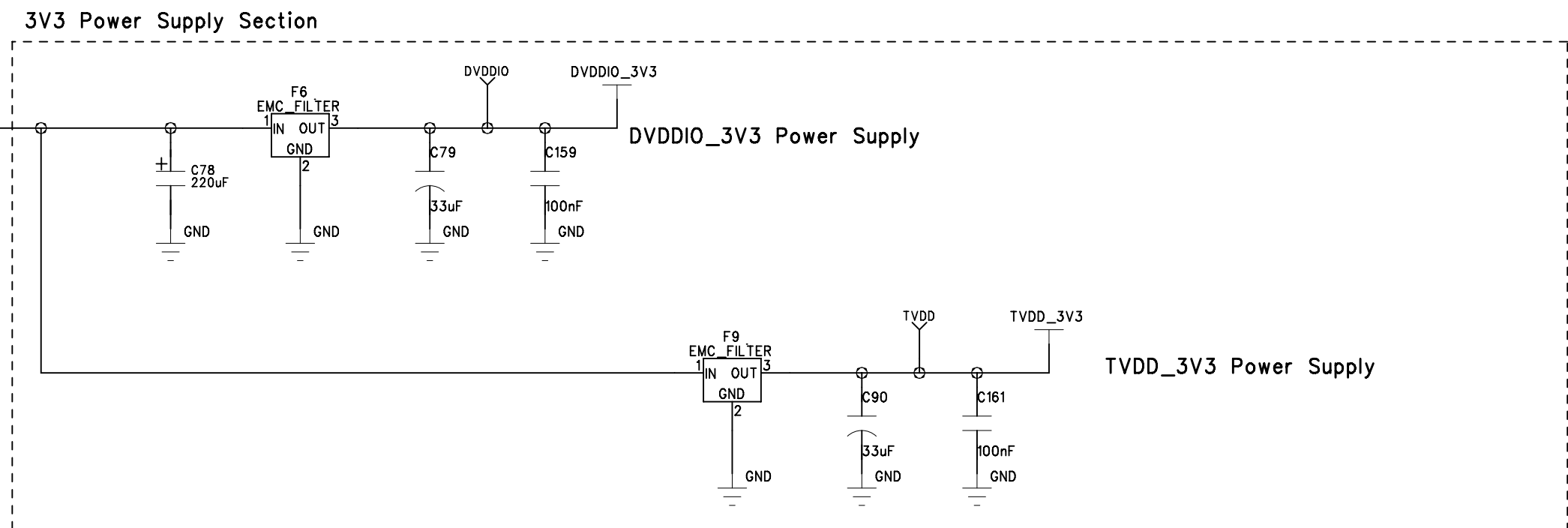
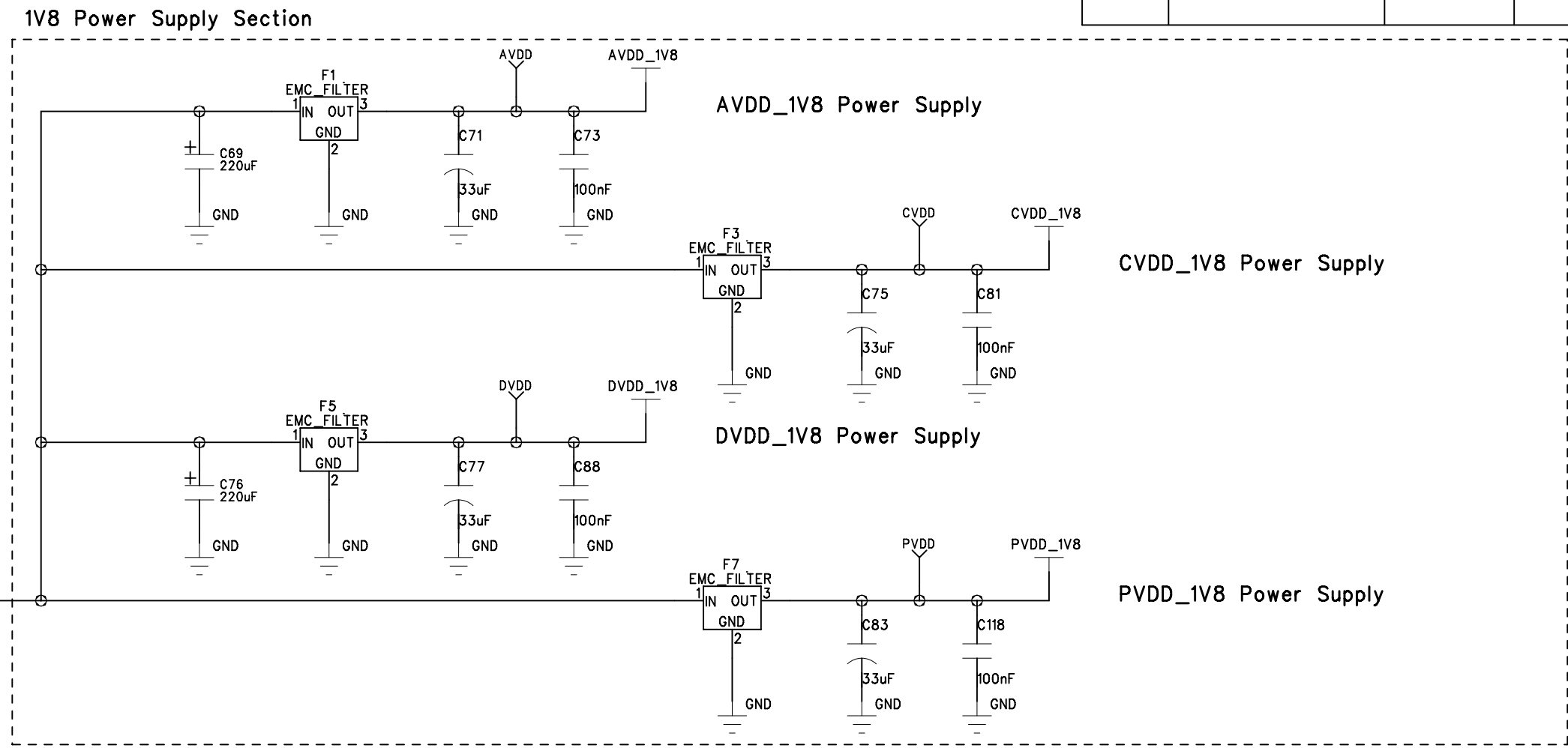
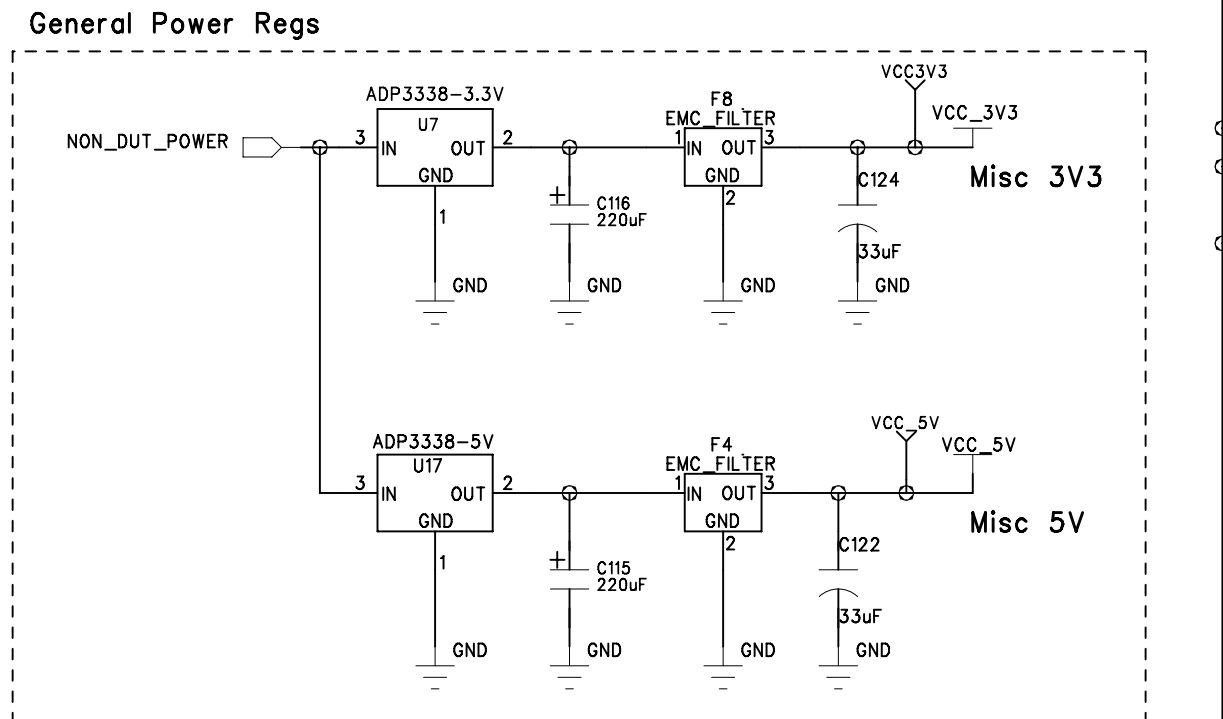
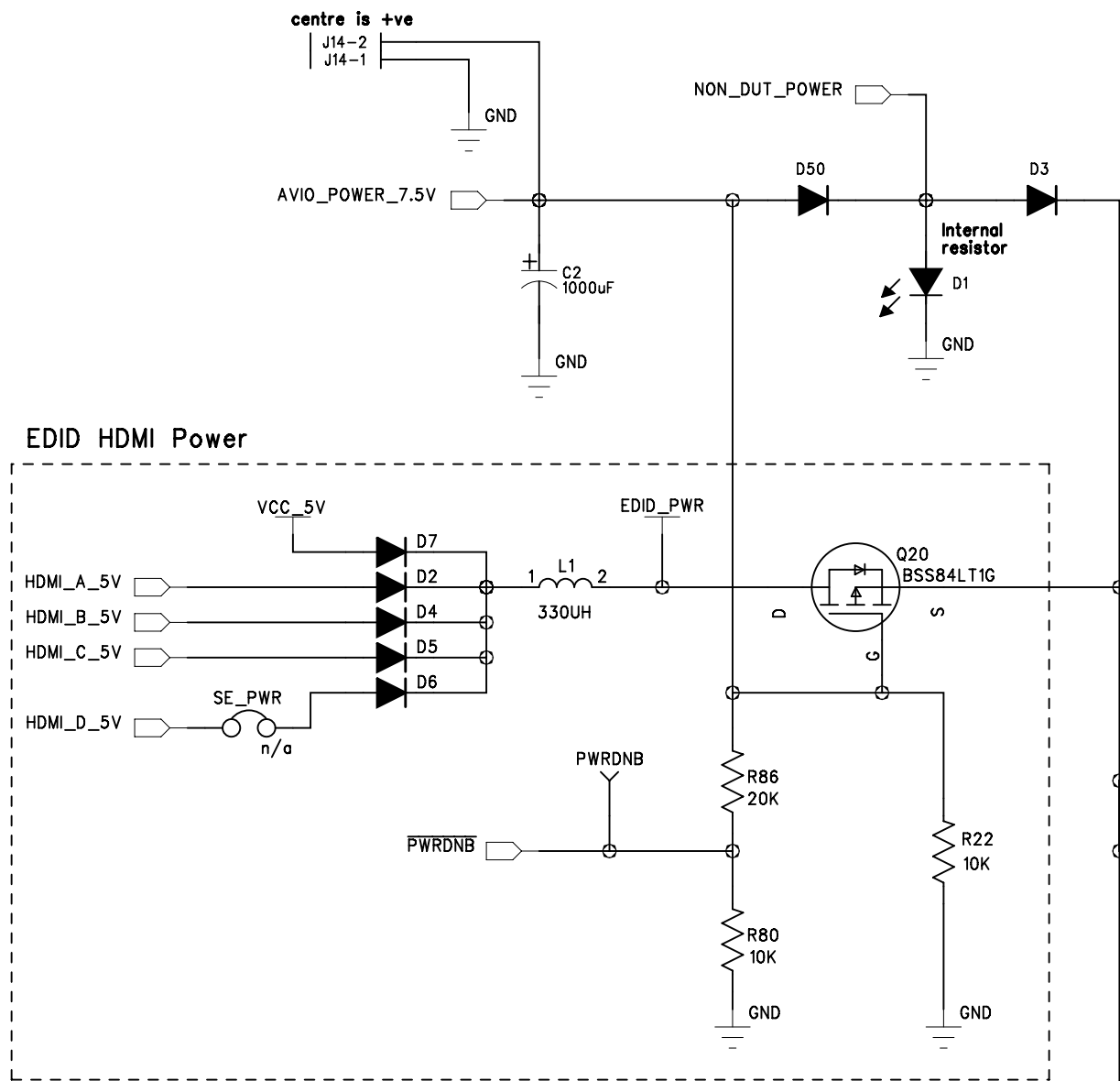
C

B

B

A

A



COMPANY: Analog Devices

TITLE: ATV Group

ADV7604 Eval Board:
Board Power Supply Sheet

DRAWN: Joe Triggs	DATED: 22/07/08
CHECKED:	DATED:
QUALITY CONTROL:	DATED:
RELEASED:	DATED:

CODE:	SIZE:	DRAWING NO:	REV: A
SCALE:			SHEET: 8 OF 9

6

5

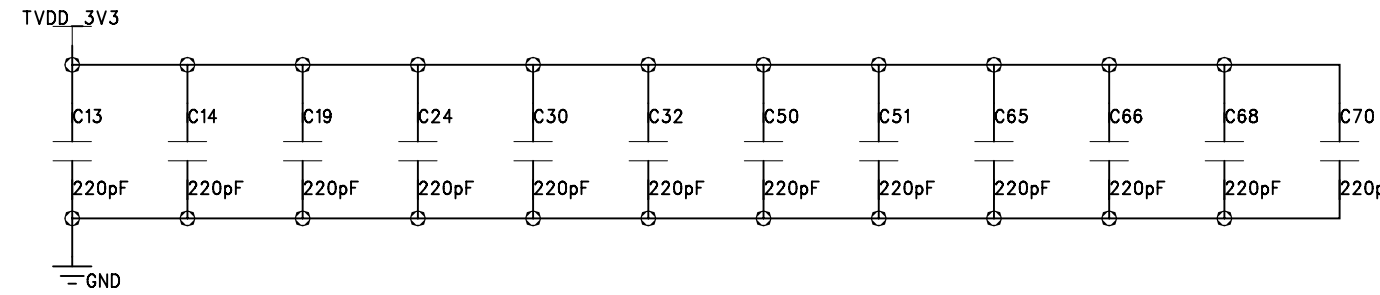
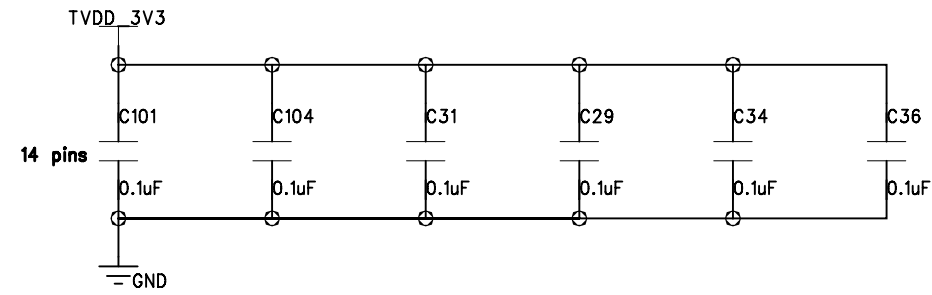
4

3

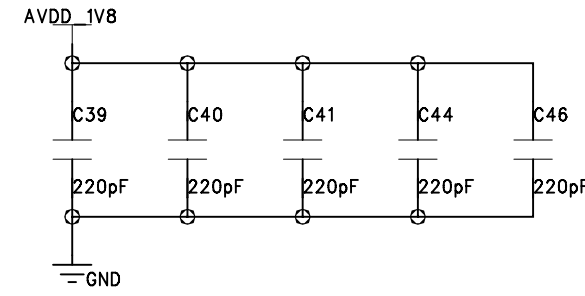
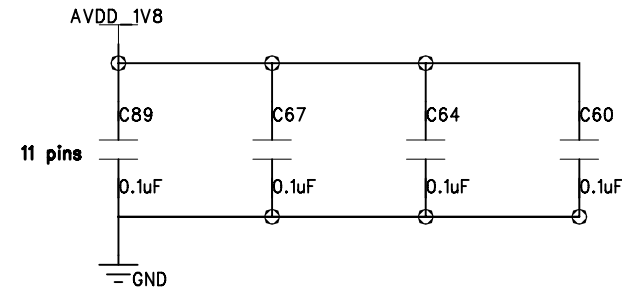
2

1

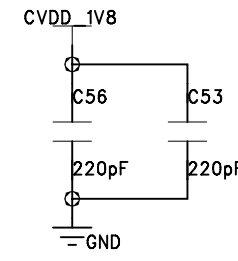
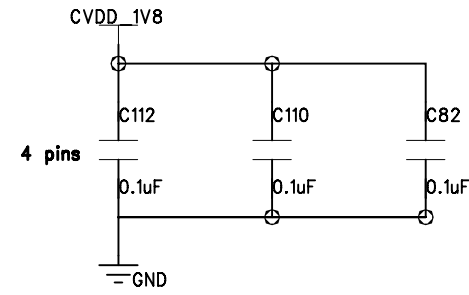
TVDD Decoupling



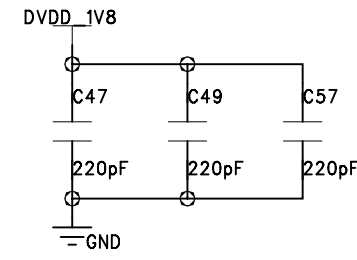
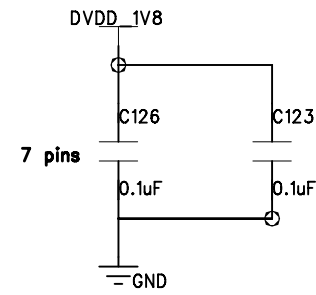
AVDD Decoupling



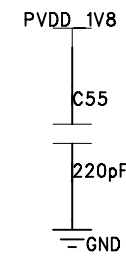
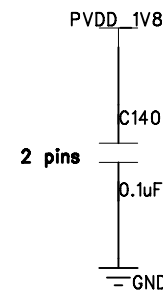
CVDD Decoupling



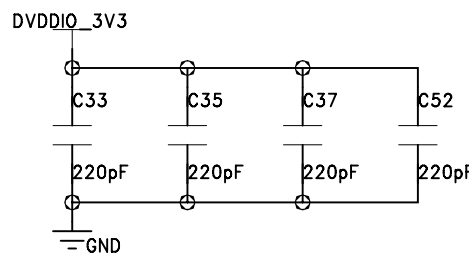
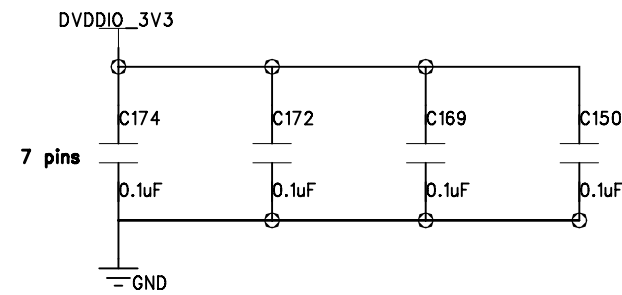
DVDD Decoupling



PVDD Decoupling



DVDDIO Decoupling



REVISION RECORD			
LTR	ECO NO:	APPROVED:	DATE:

D

D

C

C

B

B

A

A

0

COMPANY: Analog Devices			
TITLE: ATV Group ADV7604 Eval Board: ADV7604 Decoupling Sheet			
CODE:	SIZE:	DRAWING NO:	REV: A
SCALE:			SHEET: 9 OF 9

DRAWN: Joe Triggs	DATED: 22/07/08
CHECKED:	DATED:
QUALITY CONTROL:	DATED:
RELEASED:	DATED: