

Title		
ADP1051 Reference Design Buck+Push Pull		
Size	Document Number	Rev
A4	<Doc>	A
Date:	Friday, January 03, 2014	Sheet 1 of 3

Referece of U3 U6 is reverse

put on/off control circuit close to 3211

For 48V system, cap is 100v/2.2uf  
Add two cap for 48V  
for 48V system cap is 80v/150u

use 3:3:5 transformer for 48V system

mosfet use 150v mosfet BSC190N15NS3

put this snubber close to mosfet

add RC snubber

Add four CAP

add RC filter

USE 200v DIODE for 48V system

delete TVS\*

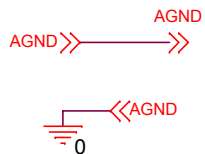
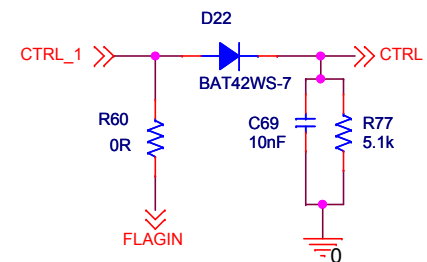
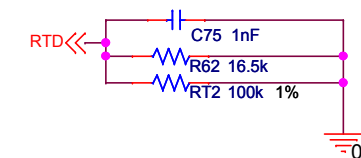
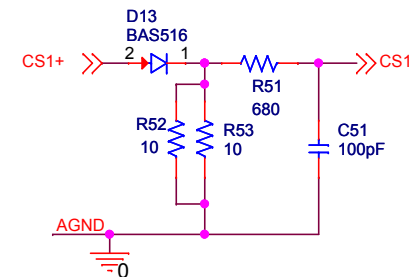
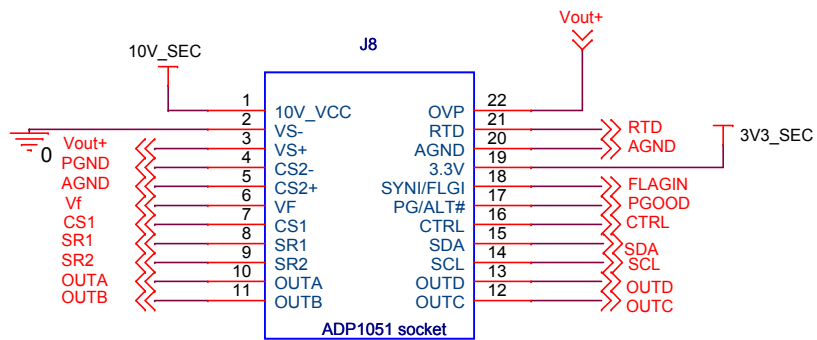
put decouple cap at pin

change c41, c32, c34 to 0603

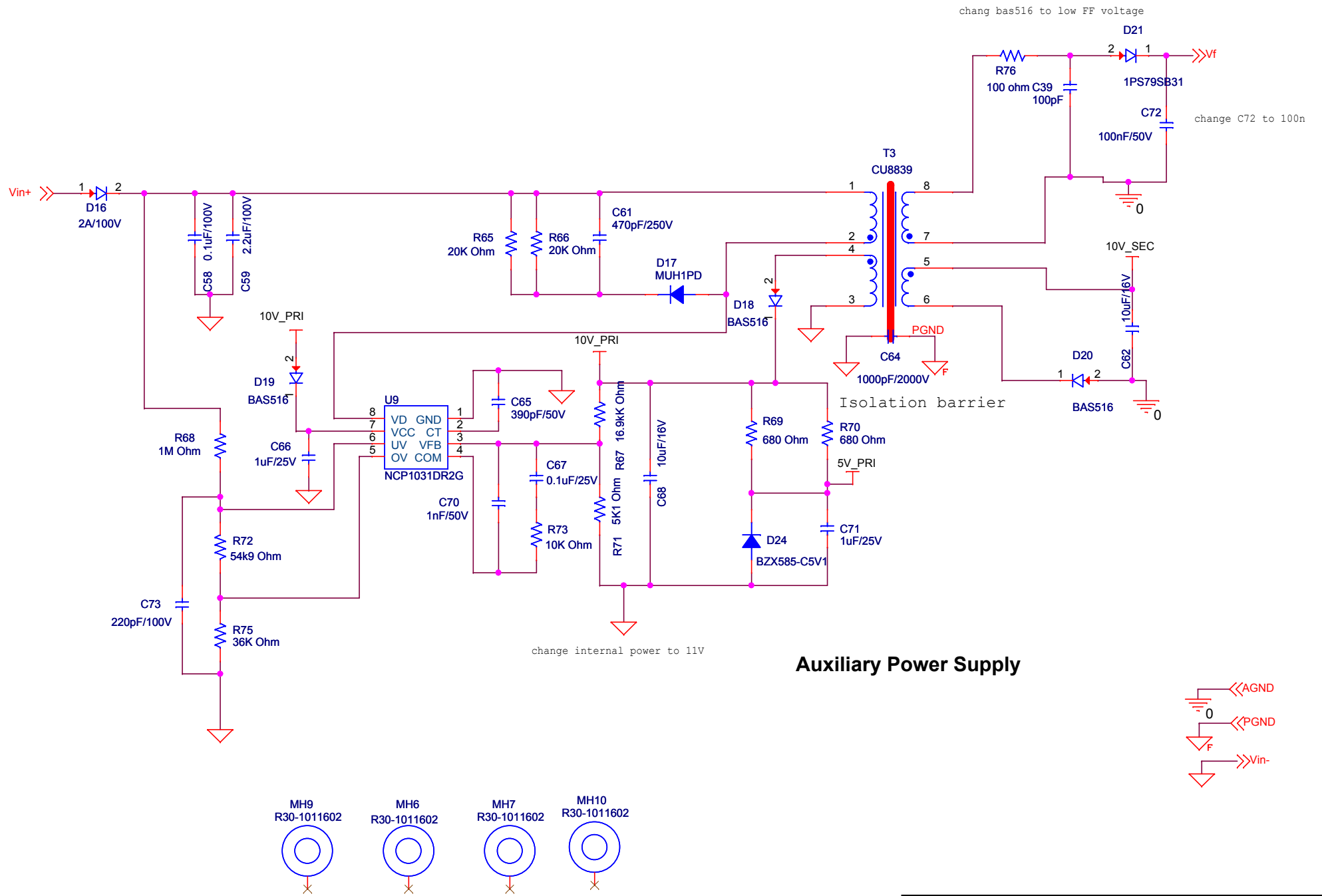
change CAP value to 100p

put decouple cap at pin

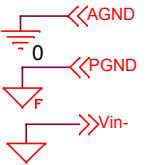
add 1k resistor



Title		
ADP1051 Reference Design Buck+Push Pull		
Size	Document Number	Rev
A4	<Doc>	A
Date:	Friday, January 03, 2014	Sheet 2 of 3



### Auxiliary Power Supply



Title		
ADP1051 Reference Design Buck+Push Pull		
Size	Document Number	Rev
A4	<Doc>	A
Date:	Friday, January 03, 2014	Sheet 3 of 3