

RADIATION TEST REPORT

PRODUCT: REF02AJQMLR

GAMMA: 0, 30K, 50K, 100K, 24Hr.

GAMMA SOURCE: Co60

DOSE RATE: 59.64 rad/sec

TESTED: November 01, 2001

The RADTESTSM DATA SERVICE is a compilation of radiation test results on Analog Devices' Space grade products. It is designed to assist customers in selecting the right product for applications where radiation is a consideration. Many products manufactured by Analog Devices, Inc. have been shown to be radiation tolerant to most tactical radiation environments, Analog Devices, Inc. does not make any claim to maintain or guarantee these levels of radiation tolerance without lot qualification test.

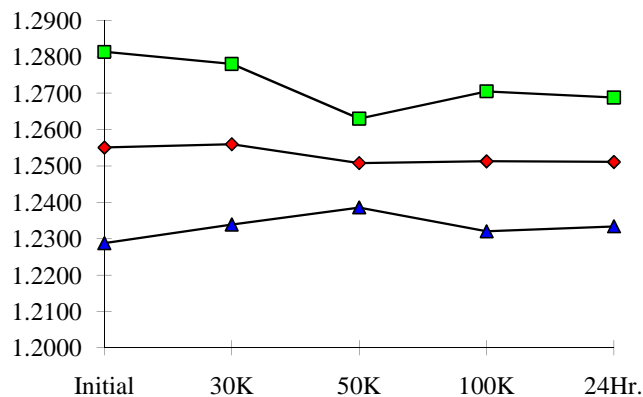
It is the responsibility of the Procuring Activity to screen products from Analog Devices, Inc. for compliance to Nuclear Hardness Critical Items (HCI) specifications.

WARNING:

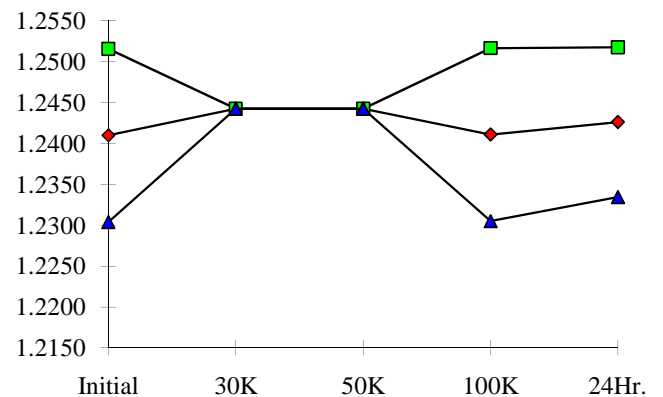
Analog Devices, Inc. does not recommend use of this data to qualify other product grades or process levels. Analog Devices, Inc. is not responsible and has no liability for any consequences, and all applicable Warranties are null and void, if any Analog product is modified in any way or used outside of normal environmental and operating conditions, including the parameters specified in the corresponding data sheet. Analog Devices does not guarantee that wafer manufacturing is the same for all process levels.



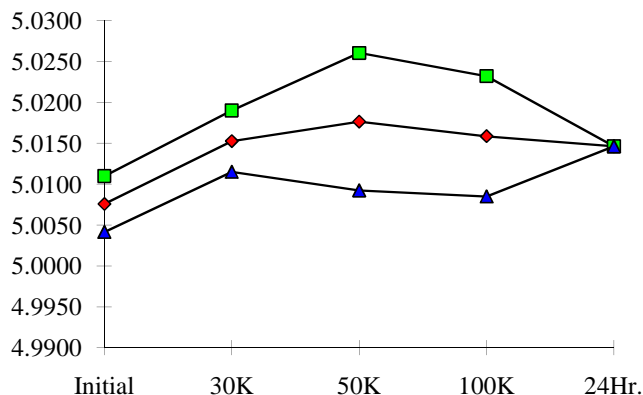
T# 1	ISY @ Vin=15V & IL=0mA				mA
SN	Initial	30K	50K	100K	24Hr.
1	1.2459	1.2352	1.2372	1.2498	1.2444
2	1.2650	1.2618	1.2559	1.2606	1.2592
3	1.2577	1.2615	1.2515	1.2476	1.2515
4	1.2535	1.2544	1.2497	1.2503	1.2480
5	1.2440	1.2462	1.2461	1.2466	1.2457
min	1.2440	1.2462	1.2461	1.2466	1.2457
max	1.2650	1.2618	1.2559	1.2606	1.2592
stdev	0.0088	0.0074	0.0041	0.0064	0.0059
average	1.2551	1.2560	1.2508	1.2513	1.2511
+3S	1.2813	1.2781	1.2630	1.2705	1.2688
-3S	1.2288	1.2339	1.2386	1.2320	1.2334



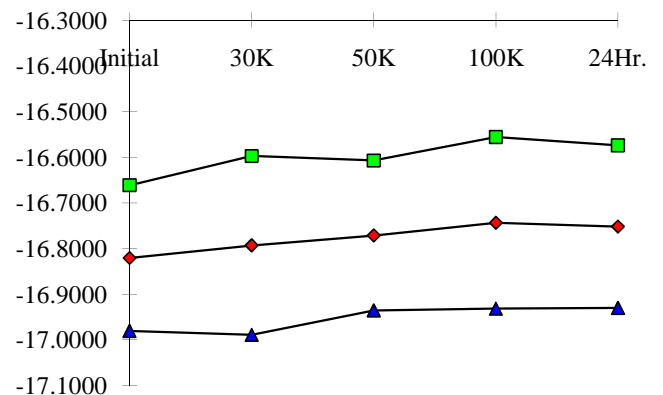
T# 2	V ref				V
SN	Initial	30K	50K	100K	24Hr.
1	1.2440	1.2380	1.2442	1.2381	1.2441
2	1.2379	1.2442	1.2442	1.2380	1.2380
3	1.2440	1.2442	1.2442	1.2441	1.2441
4	1.2440	1.2442	1.2442	1.2441	1.2441
5	1.2379	1.2442	1.2442	1.2380	1.2441
min	1.2379	1.2442	1.2442	1.2380	1.2380
max	1.2440	1.2442	1.2442	1.2441	1.2441
stdev	0.0035	0.0000	0.0000	0.0035	0.0031
average	1.2410	1.2442	1.2442	1.2411	1.2426
+3S	1.2515	1.2442	1.2442	1.2516	1.2517
-3S	1.2304	1.2442	1.2442	1.2305	1.2334



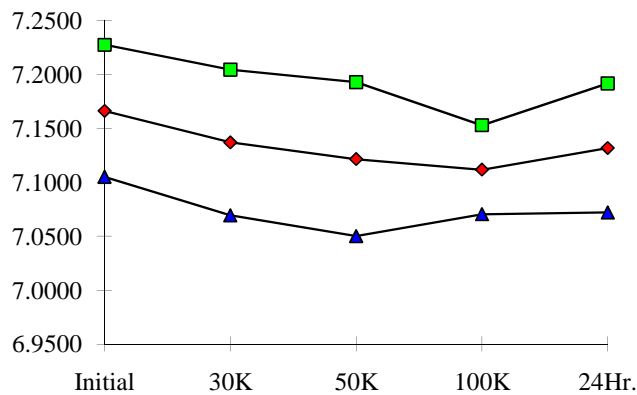
T# 3	Vout @ Vin=15V & IL=0mA				V
SN	Initial	30K	50K	100K	24Hr.
1	5.0083	5.0085	5.0086	5.0086	5.0084
2	5.0077	5.0146	5.0159	5.0146	5.0146
3	5.0083	5.0171	5.0208	5.0195	5.0146
4	5.0059	5.0146	5.0147	5.0146	5.0146
5	5.0083	5.0146	5.0190	5.0146	5.0146
min	5.0059	5.0146	5.0147	5.0146	5.0146
max	5.0083	5.0171	5.0208	5.0195	5.0146
stdev	0.0011	0.0013	0.0028	0.0025	0.0000
average	5.0076	5.0152	5.0176	5.0158	5.0146
+3S	5.0110	5.0190	5.0260	5.0232	5.0146
-3S	5.0041	5.0115	5.0092	5.0085	5.0146



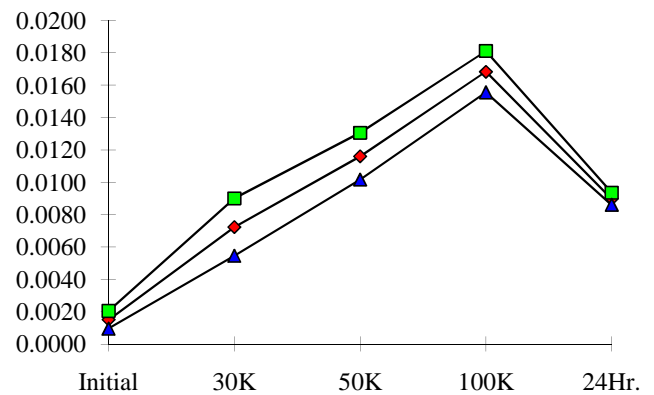
T# 4	Vtrim(-) Vin=15V, Vref=5V				%/FS
SN	Initial	30K	50K	100K	24Hr.
1	-16.6665	-16.7215	-16.6624	-16.6624	-16.6026
2	-16.8490	-16.8286	-16.8237	-16.8201	-16.8319
3	-16.8469	-16.8260	-16.7436	-16.6874	-16.7016
4	-16.7413	-16.6955	-16.7086	-16.6981	-16.7127
5	-16.8469	-16.8231	-16.8107	-16.7702	-16.7626
min	-16.8490	-16.8286	-16.8237	-16.8201	-16.8319
max	-16.7413	-16.6955	-16.7086	-16.6874	-16.7016
stdev	0.0532	0.0652	0.0548	0.0627	0.0594
average	-16.8210	-16.7933	-16.7717	-16.7440	-16.7522
+3S	-16.6615	-16.5976	-16.6074	-16.5559	-16.5740
-3S	-16.9805	-16.9890	-16.9359	-16.9320	-16.9304



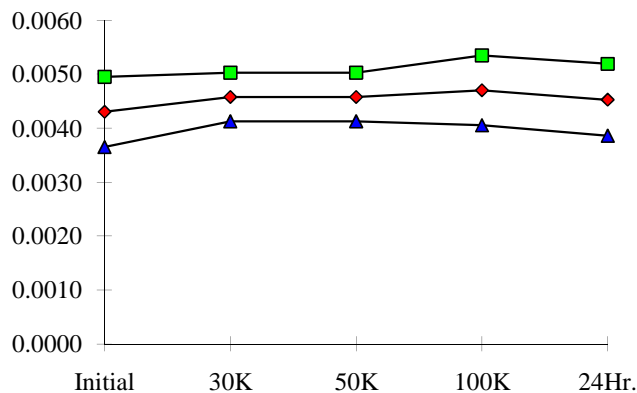
T# 5	Vtrim(+) Vin=15V, Vref=5V				%/FS
SN	Initial	30K	50K	100K	24Hr.
1	7.0672	7.0670	7.0913	7.0669	7.0671
2	7.1904	7.1560	7.1542	7.1316	7.1561
3	7.1650	7.1525	7.1229	7.1003	7.1317
4	7.1685	7.1072	7.1071	7.1072	7.1073
5	7.1406	7.1316	7.1011	7.1072	7.1317
min	7.1406	7.1072	7.1011	7.1003	7.1073
max	7.1904	7.1560	7.1542	7.1316	7.1561
stdev	0.0204	0.0225	0.0238	0.0137	0.0199
average	7.1661	7.1368	7.1213	7.1116	7.1317
+3S	7.2273	7.2043	7.1926	7.1528	7.1915
-3S	7.1049	7.0693	7.0500	7.0704	7.0719



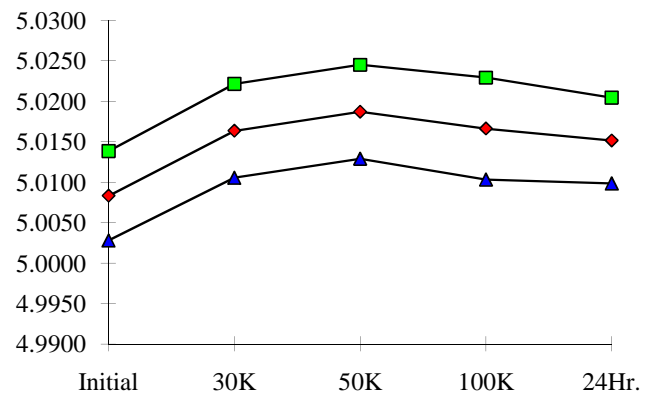
T# 6	Line Reg. 8V to 33V				%/V
SN	Initial	30K	50K	100K	24Hr.
1	0.0015	0.0015	0.0016	0.0016	0.0014
2	0.0013	0.0077	0.0120	0.0171	0.0091
3	0.0016	0.0064	0.0109	0.0162	0.0088
4	0.0014	0.0072	0.0117	0.0169	0.0090
5	0.0017	0.0076	0.0118	0.0171	0.0090
min	0.0013	0.0064	0.0109	0.0162	0.0088
max	0.0017	0.0077	0.0120	0.0171	0.0091
stdev	0.0002	0.0006	0.0005	0.0004	0.0001
average	0.0015	0.0072	0.0116	0.0168	0.0090
+3S	0.0020	0.0090	0.0130	0.0181	0.0094
-3S	0.0010	0.0055	0.0102	0.0155	0.0086



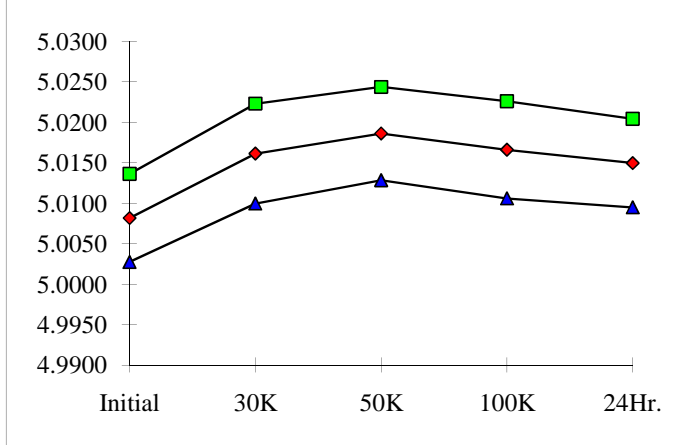
T# 7	Load Reg 0 to 10mA				%/mA
SN	Initial	30K	50K	100K	24Hr.
1	0.0048	0.0048	0.0046	0.0045	0.0047
2	0.0044	0.0047	0.0045	0.0048	0.0046
3	0.0045	0.0047	0.0048	0.0049	0.0048
4	0.0040	0.0044	0.0045	0.0044	0.0043
5	0.0043	0.0045	0.0045	0.0047	0.0044
min	0.0040	0.0044	0.0045	0.0044	0.0043
max	0.0045	0.0047	0.0048	0.0049	0.0048
stdev	0.0002	0.0002	0.0002	0.0002	0.0002
average	0.0043	0.0046	0.0046	0.0047	0.0045
+3S	0.0049	0.0050	0.0050	0.0053	0.0052
-3S	0.0037	0.0041	0.0041	0.0041	0.0039



T# 8	Isink @ 0.2mA				V
SN	Initial	30K	50K	100K	24Hr.
1	5.0105	5.0099	5.0103	5.0100	5.0099
2	5.0074	5.0157	5.0180	5.0164	5.0145
3	5.0105	5.0187	5.0211	5.0195	5.0175
4	5.0063	5.0141	5.0165	5.0145	5.0133
5	5.0090	5.0168	5.0191	5.0160	5.0152
min	5.0063	5.0141	5.0165	5.0145	5.0133
max	5.0105	5.0187	5.0211	5.0195	5.0175
stdev	0.0018	0.0019	0.0019	0.0021	0.0018
average	5.0083	5.0163	5.0187	5.0166	5.0151
+3S	5.0138	5.0221	5.0245	5.0229	5.0204
-3S	5.0028	5.0105	5.0129	5.0103	5.0098



T# 9	Isink @ 0.3mA				V
SN	Initial	30K	50K	100K	24Hr.
1	5.0101	5.0099	5.0103	5.0100	5.0103
2	5.0070	5.0149	5.0180	5.0160	5.0141
3	5.0101	5.0187	5.0211	5.0195	5.0175
4	5.0063	5.0141	5.0165	5.0149	5.0133
5	5.0093	5.0168	5.0188	5.0160	5.0149
min	5.0063	5.0141	5.0165	5.0149	5.0133
max	5.0101	5.0187	5.0211	5.0195	5.0175
stdev	0.0018	0.0021	0.0019	0.0020	0.0018
average	5.0082	5.0161	5.0186	5.0166	5.0150
+3S	5.0136	5.0223	5.0244	5.0226	5.0204
-3S	5.0027	5.0100	5.0128	5.0106	5.0095



T# 10	ISC Vo=0v				mA
SN	Initial	30K	50K	100K	24Hr.
1	26.7301	26.9731	26.9731	26.9731	26.6086
2	26.4871	25.8796	25.7581	25.3936	25.6366
3	26.6086	26.1226	25.8796	25.5151	25.6366
4	26.6086	26.1226	26.0011	25.5151	25.7581
5	26.4871	26.0011	25.8796	25.5151	25.6366
min	26.4871	25.8796	25.7581	25.3936	25.6366
max	26.6086	26.1226	26.0011	25.5151	25.7581
stdev	0.0701	0.1163	0.0992	0.0608	0.0607
average	26.5479	26.0315	25.8796	25.4847	25.6670
+3S	26.7583	26.3805	26.1772	25.6670	25.8492
-3S	26.3374	25.6825	25.5820	25.3025	25.4847

