

RADIATION TEST REPORT

PRODUCT: OP37-903Z

FILE:

MASK:

GAMMA: 0, 40K, 100K, 200K

DATE CODE:

GAMMA SOURCE: Co60

TESTED: July 15, 1996

DOSE RATE: 100 rad/sec

FACILITIES: National Semiconductor, Sunnyvale, Ca.

The RADTESTSM DATA SERVICE is a compilation of radiation test results on Analog Devices' Space grade products. It is designed to assist customers in selecting the right product for applications where radiation is a consideration. Many products manufactured by Analog Devices, Inc. have been shown to be radiation tolerant to most tactical radiation environments, Analog Devices, Inc. does not make any claim to maintain or guarantee these levels of radiation tolerance without lot qualification test.

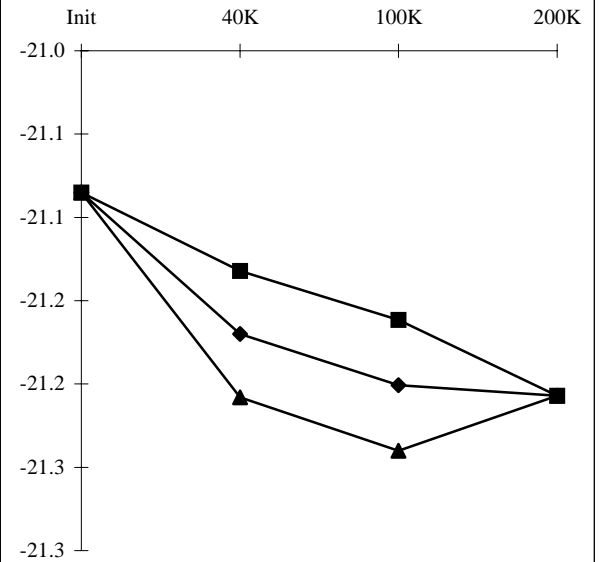
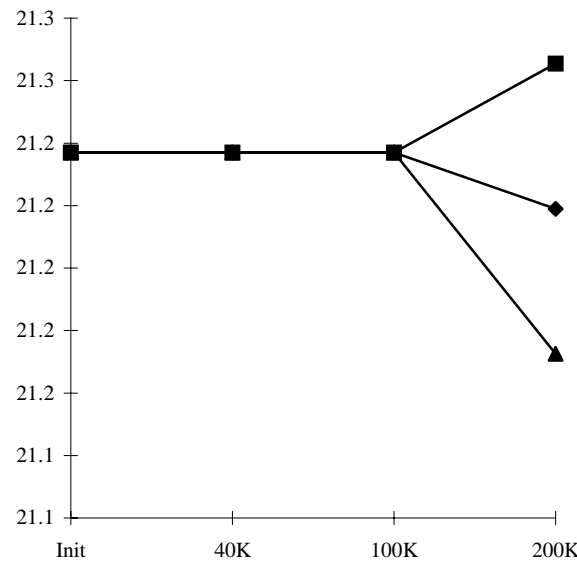
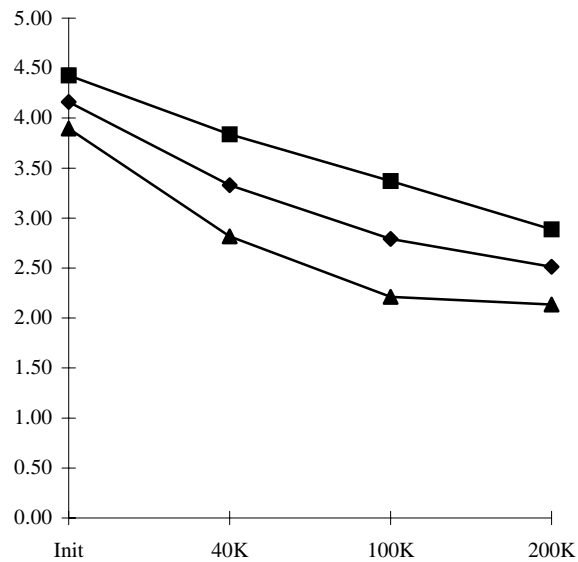
It is the responsibility of the Procuring Activity to screen products from Analog Devices, Inc. for compliance to Nuclear Hardness Critical Items (HCI) specifications.

WARNING:

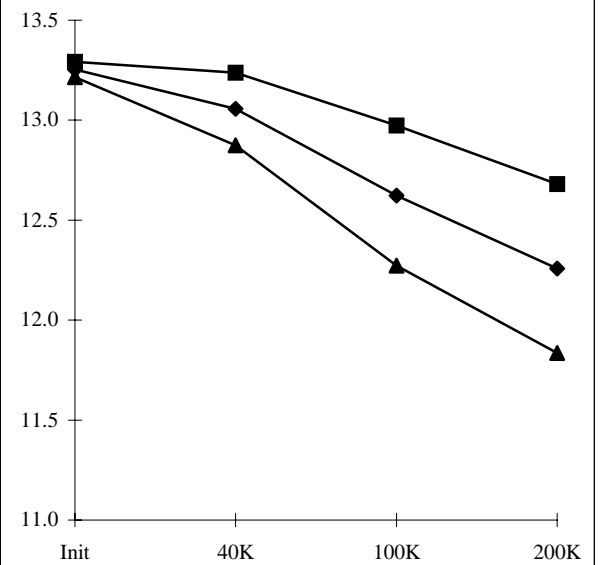
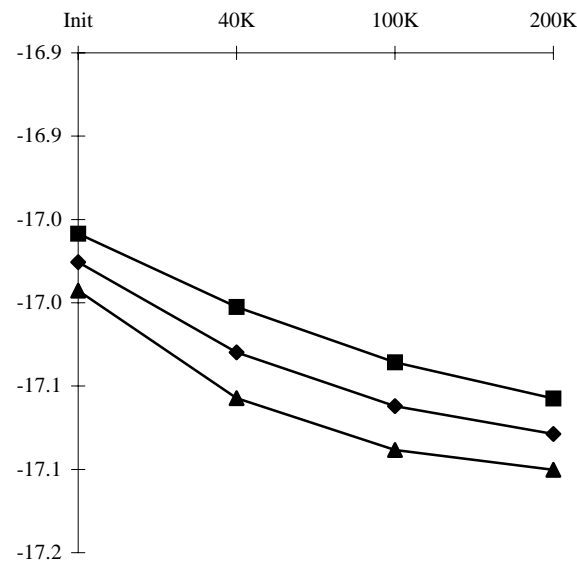
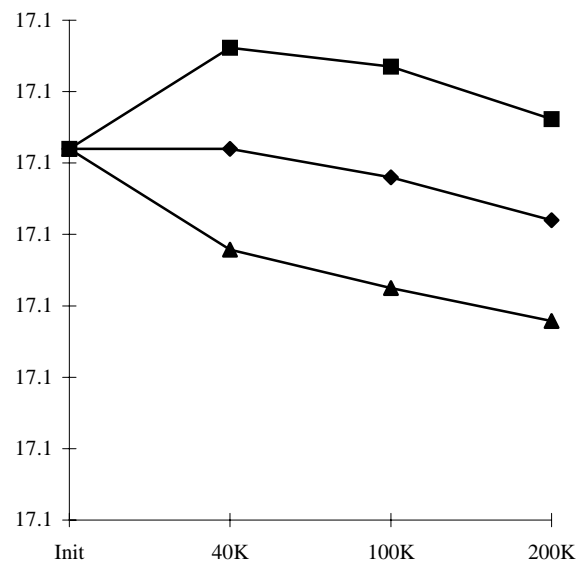
Analog Devices, Inc. does not recommend use of this data to qualify other product grades or process levels. Analog Devices, Inc. is not responsible and has no liability for any consequences, and all applicable Warranties are null and void, if any Analog product is modified in any way or used outside of normal environmental and operating conditions, including the parameters specified in the corresponding data sheet. Analog Devices does not guarantee that wafer manufacturing is the same for all process levels.



T# 1	ISY			mA	T# 2	+VOM RL=10K Vs=+/-22V			V	T# 3	-VOM RI=10K Vs=+/-22V			V
SN	Init	40K	100K	200K	SN	Init	40K	100K	200K	SN	Init	40K	100K	200K
362	4.28	4.27	4.26	4.27	362	21.2	21.2	21.2	21.2	362	-21.1	-21.1	-21.1	-21.1
363	4.10	4.07	4.08	4.08	363	21.2	21.2	21.2	21.2	363	-21.1	-21.1	-21.1	-21.1
364	4.30	4.28	4.29	4.29	364	21.2	21.2	21.2	21.2	364	-21.1	-21.1	-21.1	-21.1
365	4.07	3.30	2.75	2.51	365	21.2	21.2	21.2	21.2	365	-21.1	-21.2	-21.2	-21.2
366	4.14	3.50	3.00	2.60	366	21.2	21.2	21.2	21.2	366	-21.1	-21.1	-21.2	-21.2
367	4.07	3.24	2.69	2.47	367	21.2	21.2	21.2	21.2	367	-21.1	-21.2	-21.2	-21.2
368	4.14	3.25	2.72	2.49	368	21.2	21.2	21.2	21.2	368	-21.1	-21.2	-21.2	-21.2
369	4.14	3.29	2.73	2.46	369	21.2	21.2	21.2	21.2	369	-21.1	-21.2	-21.2	-21.2
370	4.31	3.74	3.25	2.84	370	21.2	21.2	21.2	21.2	370	-21.1	-21.1	-21.2	-21.2
371	4.22	3.31	2.76	2.47	371	21.2	21.2	21.2	21.2	371	-21.1	-21.2	-21.2	-21.2
372	4.25	3.26	2.71	2.45	372	21.2	21.2	21.2	21.2	372	-21.1	-21.2	-21.2	-21.2
373	4.23	3.25	2.70	2.45	373	21.2	21.2	21.2	21.2	373	-21.1	-21.2	-21.2	-21.2
374	4.04	3.15	2.59	2.39	374	21.2	21.2	21.2	21.2	374	-21.1	-21.2	-21.2	-21.2
min	4.04	3.15	2.59	2.39	min	21.2	21.2	21.2	21.2	min	-21.1	-21.2	-21.2	-21.2
max	4.31	3.74	3.25	2.84	max	21.2	21.2	21.2	21.2	max	-21.1	-21.1	-21.2	-21.2
stddev	0.09	0.17	0.19	0.13	stddev	0.0	0.0	0.0	0.0	stddev	0.0	0.0	0.0	0.0
average	4.16	3.33	2.79	2.51	average	21.2	21.2	21.2	21.2	average	-21.1	-21.2	-21.2	-21.2
+3S	4.43	3.84	3.37	2.89	+3S	21.2	21.2	21.2	21.3	+3S	-21.1	-21.1	-21.2	-21.2
-3S	3.90	2.82	2.21	2.14	-3S	21.2	21.2	21.2	21.2	-3S	-21.1	-21.2	-21.2	-21.2



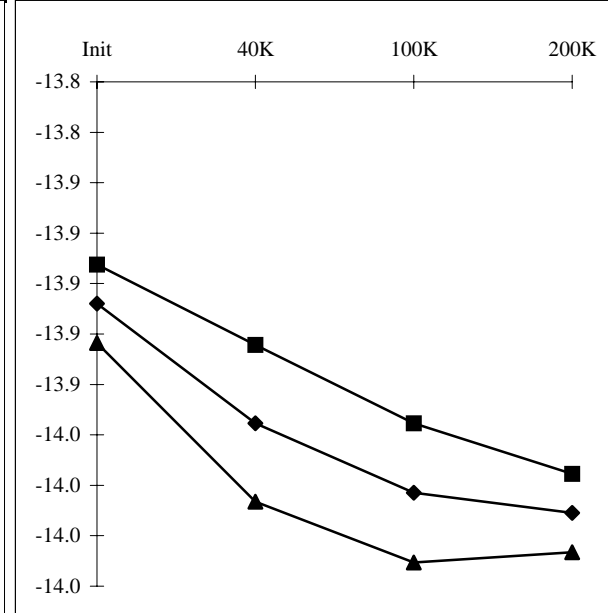
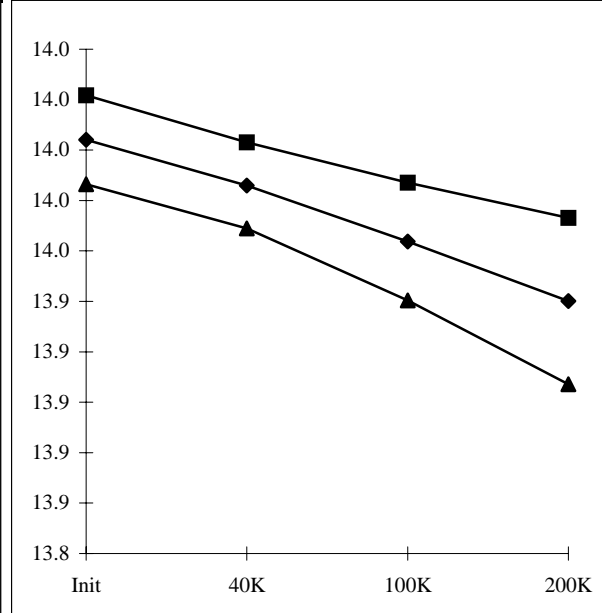
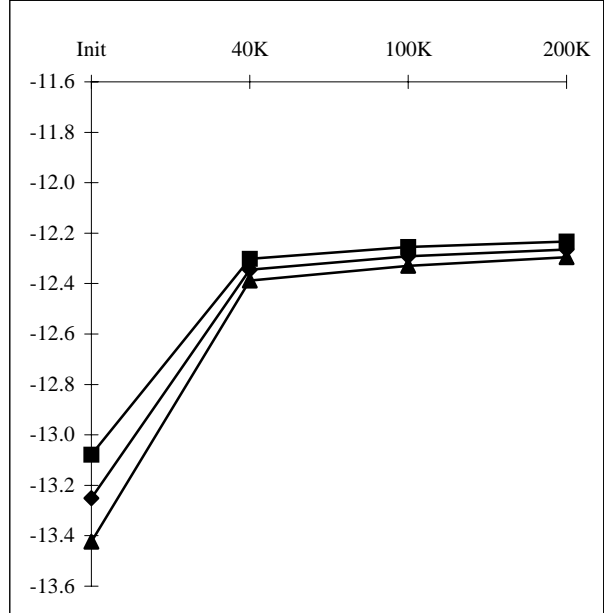
T# 4	+VOM RI=10K Vs=+/-18V			V	T# 5	-VOM RI=10K Vs=+/-18V			V	T# 6	+VOM RI=0.6K			V
SN	Init	40K	100K	200K	SN	Init	40K	100K	200K	SN	Init	40K	100K	200K
362	17.1	17.1	17.1	17.1	362	-17.0	-17.0	-17.0	-17.0	362	13.3	13.3	13.3	13.3
363	17.1	17.1	17.1	17.1	363	-17.0	-17.0	-17.0	-17.0	363	13.3	13.3	13.3	13.3
364	17.1	17.1	17.1	17.1	364	-17.0	-17.0	-17.0	-17.0	364	13.2	13.2	13.2	13.2
365	17.1	17.1	17.1	17.1	365	-17.0	-17.0	-17.1	-17.1	365	13.2	13.0	12.5	12.2
366	17.1	17.1	17.1	17.1	366	-17.0	-17.0	-17.1	-17.1	366	13.3	13.1	12.8	12.4
367	17.1	17.1	17.1	17.1	367	-17.0	-17.0	-17.1	-17.1	367	13.3	13.1	12.6	12.3
368	17.1	17.1	17.1	17.1	368	-17.0	-17.0	-17.1	-17.1	368	13.2	13.0	12.5	12.1
369	17.1	17.1	17.1	17.1	369	-17.0	-17.0	-17.1	-17.1	369	13.3	13.1	12.6	12.2
370	17.1	17.1	17.1	17.1	370	-17.0	-17.0	-17.0	-17.1	370	13.3	13.2	12.9	12.6
371	17.1	17.1	17.1	17.1	371	-17.0	-17.0	-17.1	-17.1	371	13.3	13.1	12.6	12.2
372	17.1	17.1	17.1	17.1	372	-17.0	-17.0	-17.1	-17.1	372	13.2	13.0	12.6	12.3
373	17.1	17.1	17.1	17.1	373	-17.0	-17.0	-17.1	-17.1	373	13.3	13.1	12.6	12.3
374	17.1	17.1	17.1	17.1	374	-17.0	-17.0	-17.1	-17.1	374	13.3	13.0	12.5	12.0
min	17.1	17.1	17.1	17.1	min	-17.0	-17.0	-17.1	-17.1	min	13.2	13.0	12.5	12.0
max	17.1	17.1	17.1	17.1	max	-17.0	-17.0	-17.0	-17.1	max	13.3	13.2	12.9	12.6
stddev	0.0	0.0	0.0	0.0	stddev	0.0	0.0	0.0	0.0	stddev	0.0	0.1	0.1	0.1
average	17.1	17.1	17.1	17.1	average	-17.0	-17.0	-17.1	-17.1	average	13.3	13.1	12.6	12.3
+3S	17.1	17.1	17.1	17.1	+3S	-17.0	-17.0	-17.0	-17.1	+3S	13.3	13.2	13.0	12.7
-3S	17.1	17.1	17.1	17.1	-3S	-17.0	-17.1	-17.1	-17.1	-3S	13.2	12.9	12.3	11.8



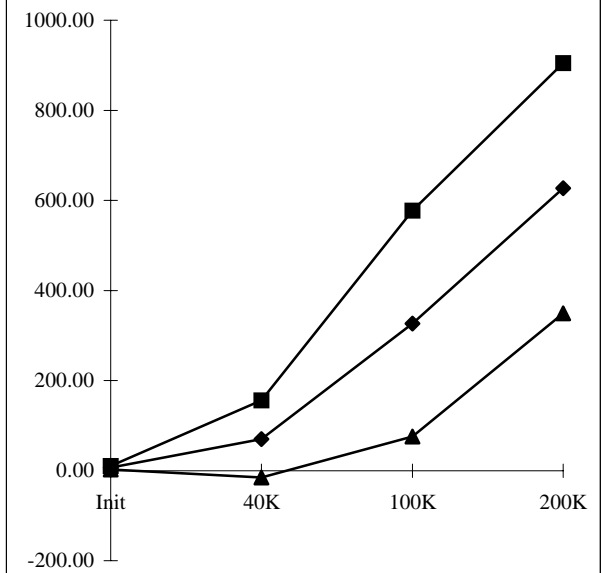
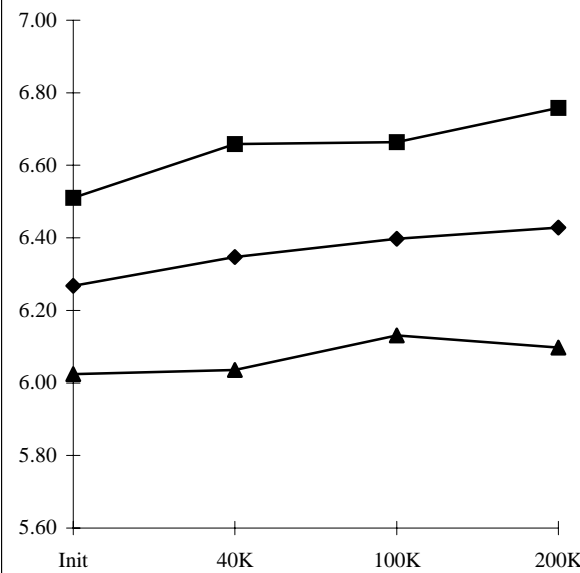
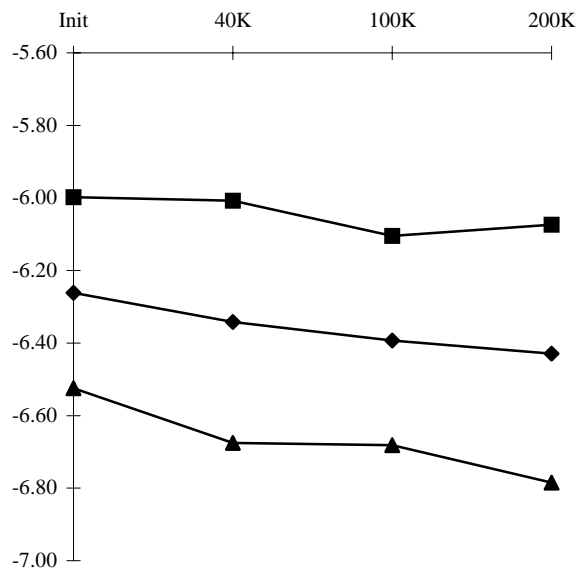
T# 7	-VOM RI=0.6K			V
	SN	Init	40K	100K
362	-13.2	-13.2	-13.3	-13.3
363	-13.3	-13.3	-13.3	-13.3
364	-13.2	-13.2	-13.2	-13.2
365	-13.2	-12.3	-12.3	-12.3
366	-13.2	-12.4	-12.3	-12.3
367	-13.3	-12.4	-12.3	-12.3
368	-13.2	-12.3	-12.3	-12.3
369	-13.3	-12.4	-12.3	-12.3
370	-13.2	-12.4	-12.3	-12.3
371	-13.2	-12.3	-12.3	-12.3
372	-13.2	-12.3	-12.3	-12.3
373	-13.3	-12.3	-12.3	-12.3
374	-13.3	-12.3	-12.3	-12.3
min	-13.3	-12.4	-12.3	-12.3
max	-13.2	-12.3	-12.3	-12.3
stddev	0.1	0.0	0.0	0.0
average	-13.3	-12.3	-12.3	-12.3
+3S	-13.1	-12.3	-12.3	-12.2
-3S	-13.4	-12.4	-12.3	-12.3

T# 8	+VOM			V
	SN	Init	40K	100K
362	14.0	14.0	14.0	14.0
363	14.0	14.0	14.0	14.0
364	14.0	14.0	14.0	14.0
365	14.0	14.0	14.0	13.9
366	14.0	14.0	14.0	13.9
367	14.0	14.0	14.0	13.9
368	14.0	14.0	14.0	13.9
369	14.0	14.0	14.0	13.9
370	14.0	14.0	14.0	14.0
371	14.0	14.0	14.0	13.9
372	14.0	14.0	14.0	13.9
373	14.0	14.0	14.0	13.9
374	14.0	14.0	14.0	13.9
min	14.0	14.0	14.0	13.9
max	14.0	14.0	14.0	14.0
stddev	0.0	0.0	0.0	0.0
average	14.0	14.0	14.0	13.9
+3S	14.0	14.0	14.0	14.0
-3S	14.0	14.0	13.9	13.9

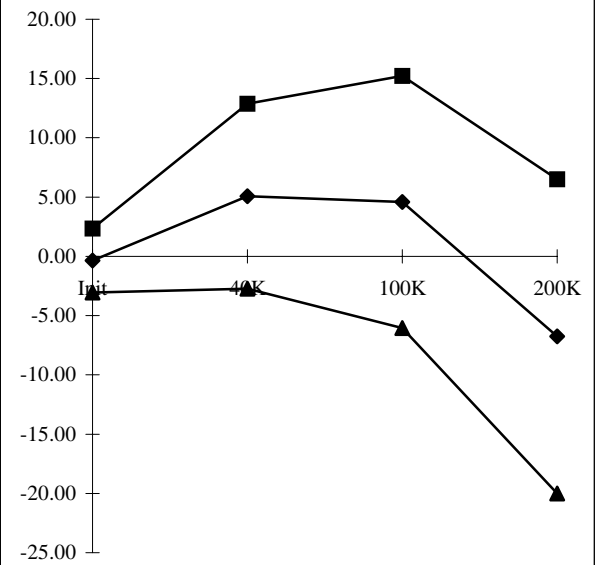
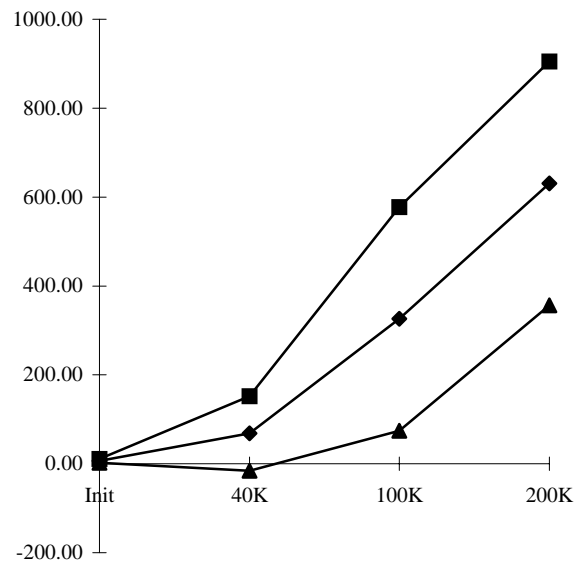
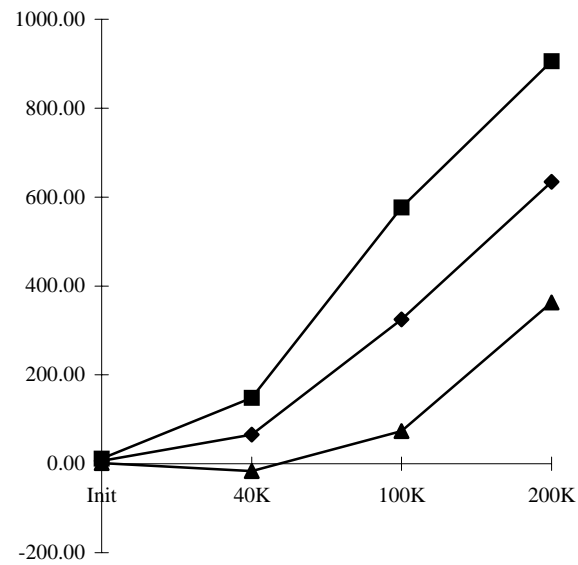
T# 9	-VOM			V
	SN	Init	40K	100K
362	-13.9	-13.9	-13.9	-13.9
363	-13.9	-13.9	-13.9	-13.9
364	-13.9	-13.9	-13.9	-13.9
365	-13.9	-14.0	-14.0	-14.0
366	-13.9	-13.9	-14.0	-14.0
367	-13.9	-14.0	-14.0	-14.0
368	-13.9	-14.0	-14.0	-14.0
369	-13.9	-14.0	-14.0	-14.0
370	-13.9	-13.9	-14.0	-14.0
371	-13.9	-14.0	-14.0	-14.0
372	-13.9	-14.0	-14.0	-14.0
373	-13.9	-14.0	-14.0	-14.0
374	-13.9	-14.0	-14.0	-14.0
min	-13.9	-14.0	-14.0	-14.0
max	-13.9	-13.9	-14.0	-14.0
stddev	0.0	0.0	0.0	0.0
average	-13.9	-14.0	-14.0	-14.0
+3S	-13.9	-13.9	-14.0	-14.0
-3S	-13.9	-14.0	-14.0	-14.0



T# 10	-NULL Adj.			mV	T# 11	+NULL Adj.			mV	T# 12	+IB			nA
SN	Init	40K	100K	200K	SN	Init	40K	100K	200K	SN	Init	40K	100K	200K
362	-6.21	-6.18	-6.16	-6.18	362	6.21	6.17	6.16	6.17	362	5.81	8.18	7.58	7.07
363	-6.22	-6.18	-6.17	-6.18	363	6.26	6.19	6.19	6.21	363	7.58	10.07	9.36	8.82
364	-6.22	-6.16	-6.16	-6.18	364	6.23	6.17	6.18	6.19	364	6.38	8.79	8.27	7.61
365	-6.44	-6.62	-6.62	-6.73	365	6.45	6.62	6.62	6.72	365	5.81	70.0	337.0	614.6
366	-6.19	-6.33	-6.39	-6.38	366	6.21	6.33	6.40	6.39	366	5.81	24.4	198.0	499.8
367	-6.23	-6.33	-6.39	-6.43	367	6.23	6.34	6.40	6.43	367	6.38	68.0	316.0	598.4
368	-6.22	-6.32	-6.35	-6.39	368	6.23	6.32	6.37	6.40	368	7.61	88.0	375.0	679.0
369	-6.22	-6.29	-6.35	-6.38	369	6.23	6.29	6.34	6.37	369	4.66	65.0	327.0	629.0
370	-6.24	-6.32	-6.37	-6.39	370	6.23	6.30	6.37	6.38	370	7.04	19.6	159.0	441.5
371	-6.22	-6.27	-6.33	-6.37	371	6.22	6.28	6.33	6.37	371	5.24	76.0	374.0	695.8
372	-6.21	-6.26	-6.30	-6.34	372	6.22	6.27	6.32	6.35	372	5.84	101.0	397.0	701.7
373	-6.41	-6.44	-6.50	-6.54	373	6.38	6.41	6.46	6.50	373	8.87	98.0	395.0	709.5
374	-6.23	-6.26	-6.33	-6.37	374	6.28	6.32	6.38	6.39	374	7.61	93.0	388.0	702.9
min	-6.44	-6.62	-6.62	-6.73	min	6.21	6.27	6.32	6.35	min	4.66	19.6	159.0	441.5
max	-6.19	-6.26	-6.30	-6.34	max	6.45	6.62	6.62	6.72	max	8.87	101.0	397.0	709.5
stddev	0.09	0.11	0.10	0.12	stddev	0.08	0.10	0.09	0.11	stddev	1.28	28.4	83.6	92.6
average	-6.26	-6.34	-6.39	-6.43	average	6.27	6.35	6.40	6.43	average	6.49	70.3	326.6	627.2
+3S	-6.00	-6.01	-6.10	-6.07	+3S	6.51	6.66	6.66	6.76	+3S	10.33	155.6	577.3	905.0
-3S	-6.52	-6.68	-6.68	-6.79	-3S	6.02	6.04	6.13	6.10	-3S	2.64	-15.0	75.9	349.5



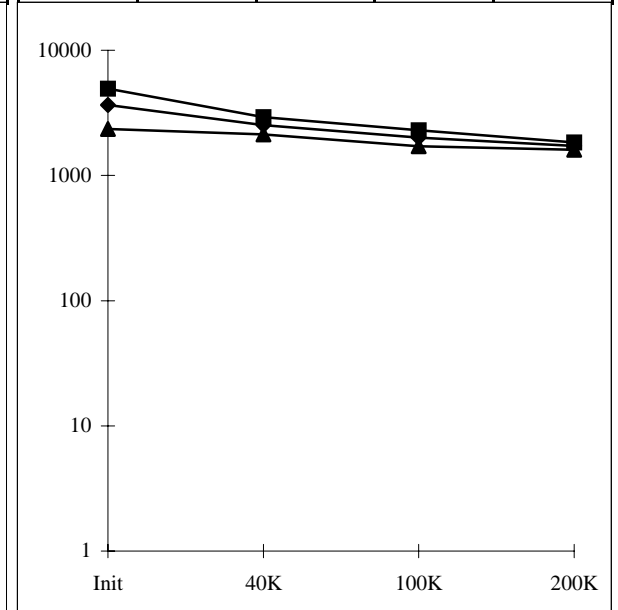
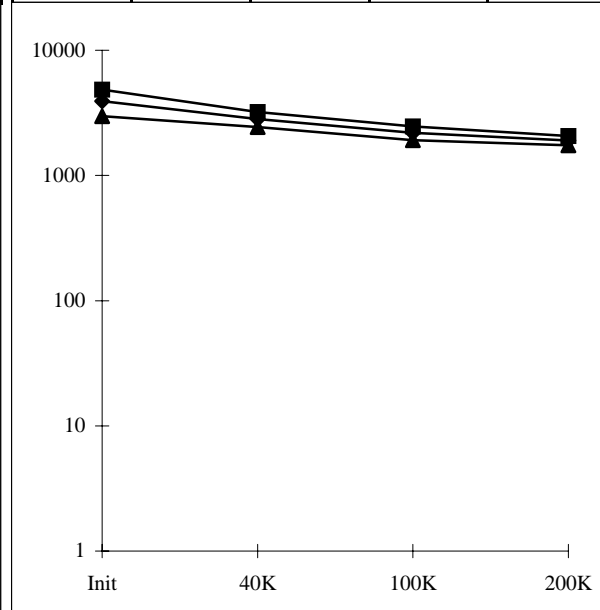
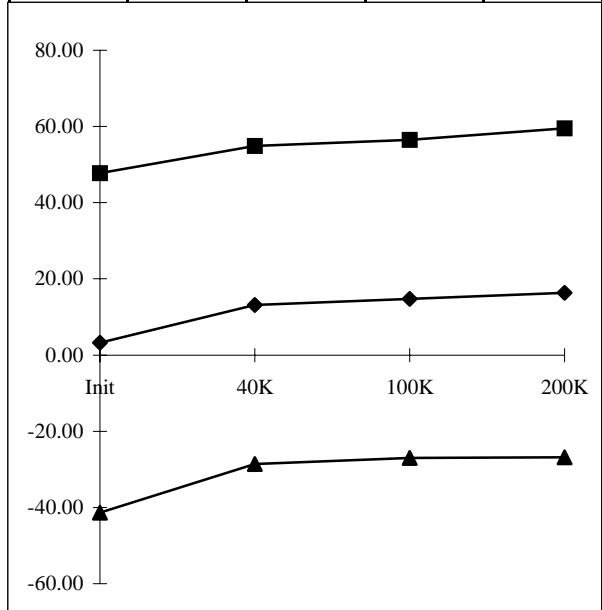
T# 13	-IB			nA	T# 14	IB Avg.			nA	T# 15	IOS			nA
SN	Init	40K	100K	200K	SN	Init	40K	100K	200K	SN	Init	40K	100K	200K
362	6.21	4.41	3.83	5.55	362	6.01	6.30	5.71	6.31	362	-1.40	3.98	3.35	1.77
363	6.84	4.95	4.95	5.58	363	7.21	7.51	7.16	7.20	363	0.37	5.18	4.58	2.94
364	6.81	5.01	5.01	6.15	364	6.60	6.90	6.64	6.88	364	-1.43	3.98	3.38	1.06
365	5.04	63	334	621	365	5.42	67	336	618	365	0.40	8.2	5.9	-0.1
366	6.89	21	195	513	366	6.35	23	196	506	366	-0.75	3.4	4.7	-12.7
367	6.18	63	314	603	367	6.28	65	315	601	367	-0.26	6.4	5.3	-5.0
368	9.19	86	381	692	368	8.40	87	378	686	368	-2.60	2.8	-2.5	-13.4
369	4.95	62	323	632	369	4.81	64	325	631	369	-0.77	3.4	8.3	-3.7
370	6.78	18	159	453	370	6.91	19	159	447	370	-0.20	1.6	-0.1	-11.0
371	4.38	71	370	700	371	4.81	73	372	698	371	0.46	4.6	7.1	-5.6
372	4.92	95	395	709	372	5.38	98	396	705	372	0.40	8.2	5.9	-8.0
373	8.59	90	391	710	373	8.73	94	393	710	373	-0.17	8.7	8.3	-2.5
374	7.36	90	389	709	374	7.48	92	389	706	374	-0.14	3.4	2.9	-5.6
min	4.38	18	159	453	min	4.81	19	159	447	min	-2.60	1.6	-2.5	-13.4
max	9.19	95	395	710	max	8.73	98	396	710	max	0.46	8.7	8.3	-0.1
stddev	1.64	27	84	90	stddev	1.41	28	84	91	stddev	0.90	2.6	3.5	4.4
average	6.43	66	325	634	average	6.46	68	326	631	average	-0.36	5.1	4.6	-6.8
+3S	11.34	148	576	906	+3S	10.69	152	577	905	+3S	2.34	12.9	15.2	6.5
-3S	1.52	-17	74	363	-3S	2.23	-16	75	356	-3S	-3.06	-2.7	-6.0	-20.0



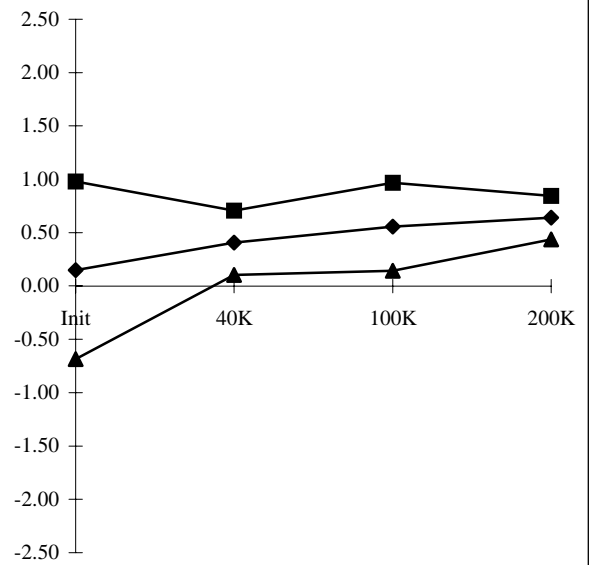
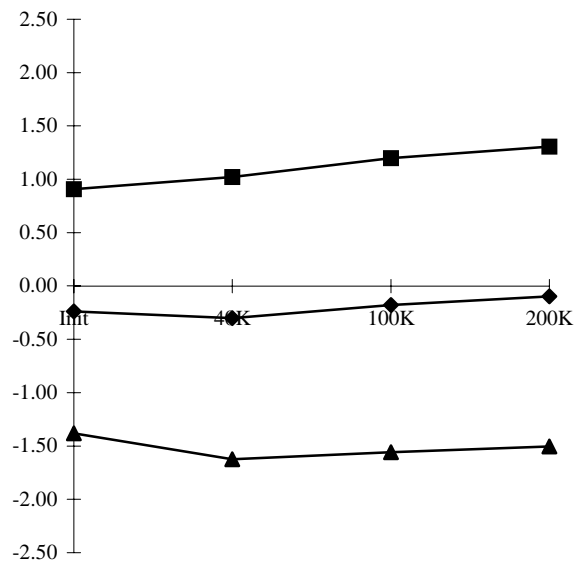
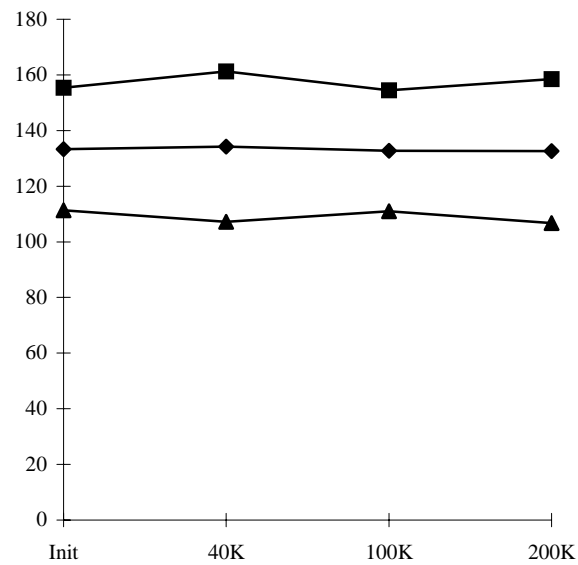
T# 16	VOS			uV
	SN	Init	40K	100K
362	-4.95	-3.31	-2.56	-4.84
363	26.37	24.38	25.00	25.17
364	5.17	5.97	4.72	5.67
365	-14.21	3.84	14.82	18.24
366	4.19	11.12	14.43	15.26
367	17.72	26.00	26.00	29.65
368	17.89	27.00	27.00	30.55
369	1.06	7.43	9.12	10.06
370	-17.70	-8.73	-12.36	-11.15
371	-6.78	2.52	5.41	4.90
372	-8.64	3.89	4.10	6.16
373	24.51	35.00	35.00	36.27
374	14.16	23.48	24.04	23.65
min	-17.70	-8.73	-12.36	-11.15
max	24.51	35.00	35.00	36.27
stddev	14.85	13.91	13.91	14.39
average	3.22	13.16	14.75	16.36
+3S	47.78	54.89	56.47	59.53
-3S	-41.34	-28.58	-26.97	-26.81

T# 17	AVO			V/mV
	SN	Init	40K	100K
362	4347	4772	4380	4775
363	3902	4455	4369	4356
364	3830	3957	3906	3739
365	4604	3011	2262	1899
366	3624	3010	2313	1948
367	3918	2707	2131	1895
368	3735	2874	2124	1820
369	4067	2931	2213	1934
370	3413	2864	2342	1992
371	3919	2663	2091	1896
372	4003	2708	2214	1938
373	3884	2704	2067	1847
374	3956	2775	2177	1842
min	3413	2663	2067	1820
max	4604	3011	2342	1992
stddev	312	131	93	54
average	3912	2825	2193	1901
+3S	4849	3218	2471	2062
-3S	2975	2432	1915	1740

T# 18	AVO			V/mV
	SN	Init	40K	100K
362	4456	4258	4612	4998
363	3817	4346	4204	4027
364	3291	3485	3742	3599
365	4564	2747	2070	1710
366	3348	2473	1992	1776
367	3664	2429	1971	1696
368	3635	2493	1968	1690
369	4097	2762	2194	1728
370	2952	2346	2129	1777
371	3427	2434	1891	1673
372	3562	2517	1954	1732
373	3640	2529	1897	1678
374	3596	2570	1990	1743
min	2952	2346	1891	1673
max	4564	2762	2194	1777
stddev	431	134	98	38
average	3648	2530	2006	1720
+3S	4943	2931	2298	1833
-3S	2354	2129	1713	1608



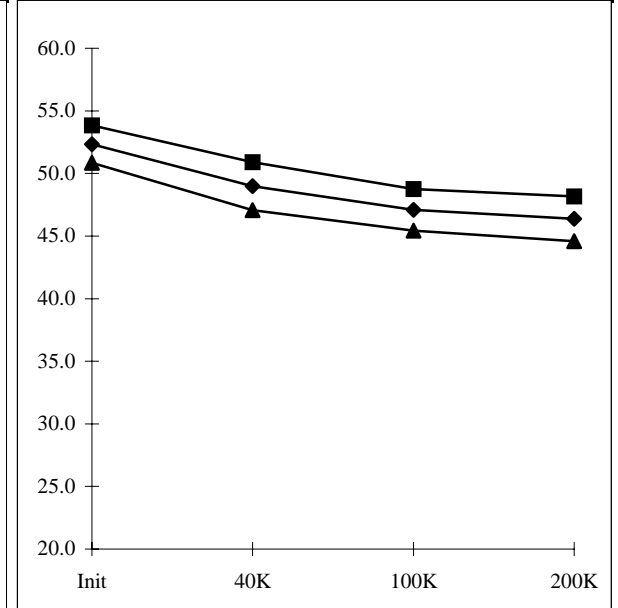
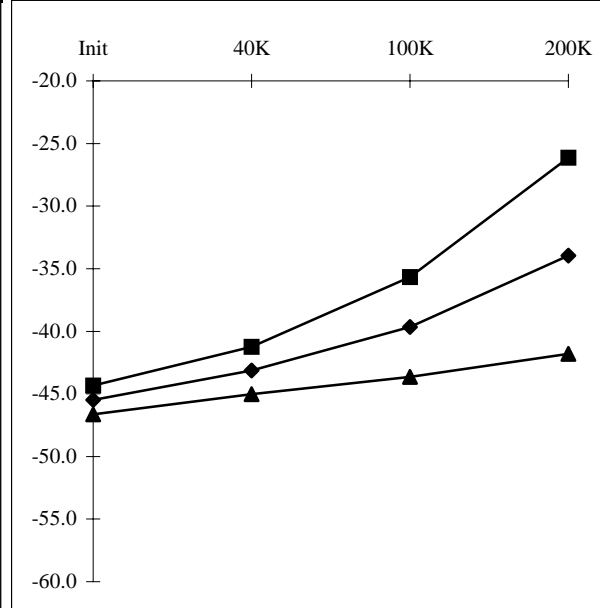
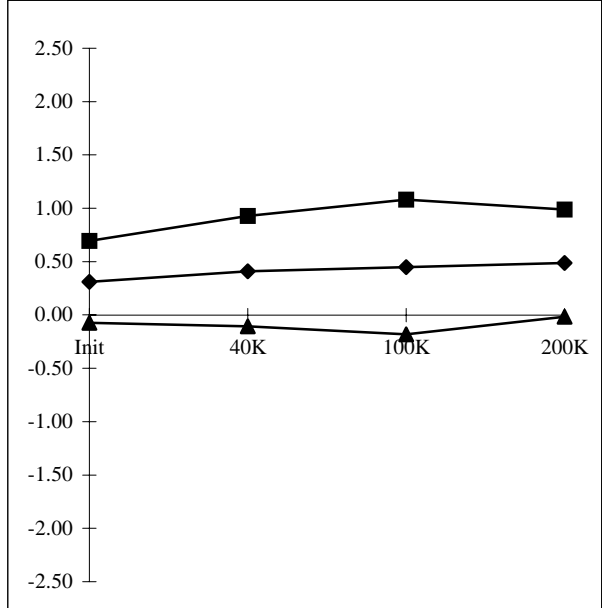
T# 19	CMRR				dB	T# 20	+PSRR				uV/V	T# 21	-PSRR				uV/V
SN	Init	40K	100K	200K		SN	Init	40K	100K	200K		SN	Init	40K	100K	200K	
362	131	132	141	137		362	-0.20	-0.25	-0.40	-0.06		362	0.17	-0.23	-0.23	0.12	
363	128	129	142	128		363	-0.36	-0.32	-0.20	-0.46		363	0.18	0.51	-0.27	-0.12	
364	132	129	128	127		364	-0.28	-0.23	-0.34	-0.48		364	0.29	0.25	-0.04	0.61	
365	133	135	137	137		365	-0.25	-0.15	-0.09	0.32		365	-0.02	0.49	0.54	0.53	
366	138	134	139	133		366	-0.33	-0.41	-0.31	-0.18		366	0.20	0.25	0.25	0.74	
367	134	138	136	147		367	-0.33	-0.36	-0.27	-0.05		367	-0.23	0.30	0.62	0.69	
368	147	135	126	128		368	-0.37	-0.41	-0.26	-0.27		368	-0.20	0.45	0.66	0.65	
369	134	134	139	143		369	-0.20	-0.09	-0.02	-0.25		369	0.33	0.43	0.54	0.53	
370	136	141	144	139		370	-0.26	-0.30	-0.14	0.12		370	0.17	0.51	0.48	0.61	
371	133	130	130	129		371	-0.17	-0.25	-0.16	-0.14		371	0.57	0.25	0.48	0.69	
372	134	152	129	128		372	-0.13	-0.36	-0.26	-0.16		372	0.48	0.47	0.58	0.66	
373	123	123	129	123		373	0.62	0.56	0.82	0.73		373	-0.12	0.47	0.77	0.67	
374	121	120	120	120		374	-0.96	-1.25	-1.09	-1.10		374	0.28	0.43	0.63	0.65	
min	121	120	120	120		min	-0.96	-1.25	-1.09	-1.10		min	-0.23	0.25	0.25	0.53	
max	147	152	144	147		max	0.62	0.56	0.82	0.73		max	0.57	0.51	0.77	0.74	
stddev	7	9	7	9		stddev	0.38	0.44	0.46	0.47		stddev	0.28	0.10	0.14	0.07	
average	133	134	133	133		average	-0.24	-0.30	-0.18	-0.10		average	0.15	0.41	0.56	0.64	
+3S	155	161	154	159		+3S	0.91	1.02	1.20	1.31		+3S	0.98	0.71	0.97	0.84	
-3S	111	107	111	107		-3S	-1.38	-1.63	-1.56	-1.51		-3S	-0.68	0.10	0.14	0.44	



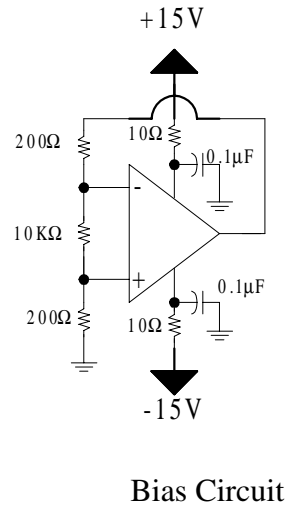
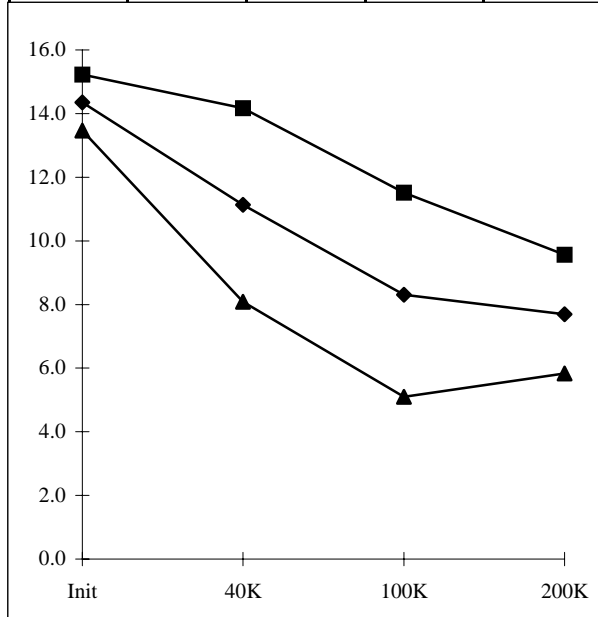
T# 22	PSRR			uV/V
SN	Init	40K	100K	200K
362	0.18	0.24	0.31	0.09
363	0.27	0.41	0.23	0.29
364	0.28	0.24	0.19	0.55
365	0.13	0.32	0.32	0.42
366	0.26	0.33	0.28	0.46
367	0.28	0.33	0.45	0.37
368	0.28	0.43	0.46	0.46
369	0.26	0.26	0.28	0.39
370	0.22	0.41	0.31	0.36
371	0.37	0.25	0.32	0.41
372	0.30	0.41	0.42	0.41
373	0.37	0.52	0.79	0.70
374	0.62	0.84	0.86	0.88
min	0.13	0.25	0.28	0.36
max	0.62	0.84	0.86	0.88
stddev	0.13	0.17	0.21	0.17
average	0.31	0.41	0.45	0.49
+3S	0.69	0.93	1.08	0.99
-3S	-0.07	-0.11	-0.18	-0.02

T# 23	+ISC			mA
SN	Init	40K	100K	200K
362	-45.7	-45.9	-46.0	-45.9
363	-45.9	-46.4	-46.3	-46.3
364	-45.7	-46.2	-46.2	-46.1
365	-45.2	-42.0	-39.0	-33.3
366	-45.2	-42.8	-40.7	-36.6
367	-45.2	-42.7	-39.1	-33.0
368	-46.2	-43.3	-38.9	-32.2
369	-45.2	-43.0	-39.4	-32.7
370	-45.8	-44.2	-42.4	-39.8
371	-45.5	-43.3	-39.7	-33.3
372	-45.8	-43.7	-40.5	-35.1
373	-45.7	-43.7	-39.6	-33.2
374	-45.0	-42.7	-37.4	-30.5
min	-46.2	-44.2	-42.4	-39.8
max	-45.0	-42.0	-37.4	-30.5
stddev	0.4	0.6	1.3	2.6
average	-45.5	-43.1	-39.7	-34.0
+3S	-44.3	-41.2	-35.7	-26.1
-3S	-46.6	-45.0	-43.7	-41.8

T# 24	-ISC			mA
SN	Init	40K	100K	200K
362	52.3	52.4	52.6	52.5
363	53.1	53.5	53.5	53.4
364	52.9	53.3	53.3	53.2
365	52.2	47.8	46.4	45.1
366	51.7	48.8	46.8	46.0
367	52.2	48.5	46.6	46.0
368	53.6	49.6	47.8	47.1
369	52.3	49.0	47.1	46.5
370	52.4	50.2	48.2	47.1
371	52.1	48.8	46.9	46.3
372	52.4	49.0	47.1	46.6
373	52.5	49.2	47.3	46.8
374	52.0	48.8	46.8	46.3
min	51.7	47.8	46.4	45.1
max	53.6	50.2	48.2	47.1
stddev	0.5	0.6	0.6	0.6
average	52.3	49.0	47.1	46.4
+3S	53.8	50.9	48.8	48.2
-3S	50.9	47.1	45.4	44.6



T# 25	+SLEW RATE			V/uS
	SN	Init	40K	100K
362	14.9	14.9	14.8	14.9
363	14.1	14.0	14.1	14.0
364	14.6	14.6	14.5	14.5
365	14.1	11.0	8.0	7.6
366	14.4	12.5	9.0	8.3
367	14.0	10.0	8.0	7.4
368	14.3	10.8	8.0	7.5
369	14.1	10.9	8.0	7.3
370	15.0	13.3	11.0	9.2
371	14.5	11.2	8.0	7.7
372	14.5	10.8	8.0	7.6
373	14.4	10.8	8.0	7.5
374	14.1	10.0	7.0	7.0
min	14.0	10.0	7.0	7.0
max	15.0	13.3	11.0	9.2
stddev	0.3	1.0	1.1	0.6
average	14.3	11.1	8.3	7.7
+3S	15.2	14.2	11.5	9.6
-3S	13.5	8.1	5.1	5.8



T# 26	-SLEW RATE			V/uS
	SN	Init	40K	100K
362	14.4	14.3	14.2	14.5
363	13.4	13.5	13.5	13.5
364	14.1	14.2	14.0	14.1
365	13.5	11.1	8.0	7.7
366	13.8	12.2	9.0	8.3
367	13.6	10.7	8.0	7.5
368	13.6	10.8	8.0	7.5
369	13.7	11.0	8.0	7.4
370	14.4	13.1	10.9	9.2
371	14.0	11.2	8.0	7.7
372	14.1	11.0	8.0	7.6
373	14.0	10.8	8.0	7.5
374	13.5	10.0	8.0	7.1
min	13.5	10.0	8.0	7.1
max	14.4	13.1	10.9	9.2
stddev	0.3	0.9	0.9	0.6
average	13.8	11.2	8.4	7.7
+3S	14.7	13.8	11.2	9.5
-3S	12.9	8.6	5.6	6.0

